



# SZABO SCANDIC

Part of Europa Biosite

## Produktinformation



Forschungsprodukte & Biochemikalien



Zellkultur & Verbrauchsmaterial



Diagnostik & molekulare Diagnostik



Laborgeräte & Service

Weitere Information auf den folgenden Seiten!  
See the following pages for more information!



### Lieferung & Zahlungsart

siehe unsere [Liefer- und Versandbedingungen](#)

### Zuschläge

- Mindermengenzuschlag
- Trockeneiszuschlag
- Gefahrgutzuschlag
- Expressversand

### SZABO-SCANDIC HandelsgmbH

Quellenstraße 110, A-1100 Wien

T. +43(0)1 489 3961-0

F. +43(0)1 489 3961-7

[mail@szabo-scandic.com](mailto:mail@szabo-scandic.com)

[www.szabo-scandic.com](http://www.szabo-scandic.com)

[linkedin.com/company/szaboscandic](https://www.linkedin.com/company/szaboscandic) 

## SLC1A2 monoclonal antibody (M07), clone 1D8

Catalog # : H00006506-M07

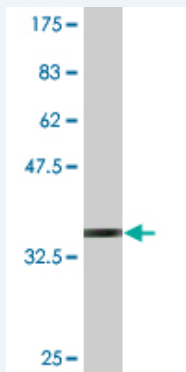
規格 : [ 100 ug ]

[List All](#)

### Specification

<b>Product Description:</b>	Mouse monoclonal antibody raised against a partial recombinant SLC1A2.
<b>Immunogen:</b>	SLC1A2 (NP_004162, 160 a.a. ~ 239 a.a) partial recombinant protein with GST tag. MW of the GST tag alone is 26 KDa.
<b>Sequence:</b>	DEVSSLDAFLDLIRNLFPENLVQACFQQIQTVTKKVLVAPPPDEEANATS AVWSLLNETVTEVPEETKMVIKKGLEFKDG
<b>Host:</b>	Mouse
<b>Reactivity:</b>	Human
<b>Isotype:</b>	IgG2a Kappa

**Quality Control Testing:** Antibody Reactive Against Recombinant Protein.



Western Blot detection against Immunogen (34.54 KDa) .

**Storage Buffer:** In 1x PBS, pH 7.4

**Storage Instruction:** Store at -20°C or lower. Aliquot to avoid repeated freezing and thawing.

**MSDS:** [Download](#)

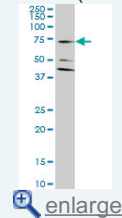
**Datasheet:** [Download](#)

### Applications

**Western Blot (Cell lysate)**

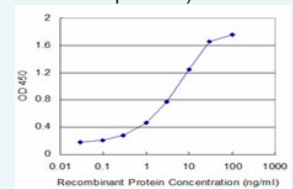
### Application Image

Western Blot (Cell lysate)

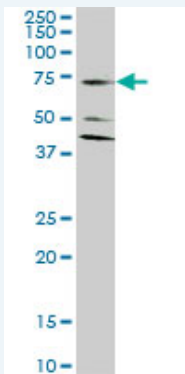


Western Blot (Recombinant protein)

Sandwich ELISA (Recombinant protein)



ELISA



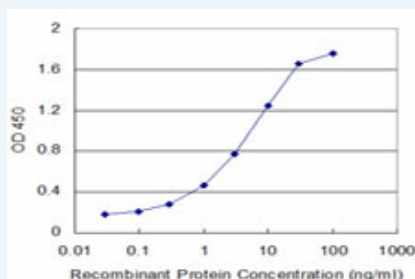
SLC1A2 monoclonal antibody (M07), clone 1D8. Western Blot analysis of SLC1A2 expression in HeLa ( Cat # L013V1 ).

[Protocol Download](#)

#### Western Blot (Recombinant protein)

[Protocol Download](#)

#### Sandwich ELISA (Recombinant protein)



Detection limit for recombinant GST tagged SLC1A2 is approximately 0.03ng/ml as a capture antibody.

[Protocol Download](#)

#### ELISA

#### Gene Information

Entrez GeneID: [6506](#)

GeneBank [NM\\_004171](#)

Accession#:

Protein [NP\\_004162](#)

Accession#:

Gene Name: SLC1A2

Gene Alias: EAAT2, GLT-1

Gene Description: solute carrier family 1 (glial high affinity glutamate transporter), member 2

Omim ID: [600300](#)

Gene Ontology: [Hyperlink](#)

**Gene Summary:** This gene encodes a member of a family of solute transporter proteins. The membrane-bound protein is the principal transporter that clears the excitatory neurotransmitter glutamate from the extracellular space at synapses in the central nervous system. Glutamate clearance is necessary for proper synaptic activation and to prevent neuronal damage from excessive activation of glutamate receptors. Mutations in and decreased expression of this protein are associated with amyotrophic lateral sclerosis. Alternatively spliced transcript variants of this gene have been described, but their full-length nature is not known.

[provided by RefSeq]

---

**Other**                    excitatory amino acid transporter 2,excitotoxic amino acid transporter  
**Designations:**        2,glial high affinity glutamate transporter,glutamate/aspartate  
                             transporter II,sodium-dependent glutamate/aspartate transporter  
                             2,solute carrier family 1, member 2

---

### Gene Pathway

---

[Amyotrophic lateral sclerosis \(ALS\)](#)

### Related Disease

---

[Alcoholism](#) [Child Development Disorders, Pervasive Cognition](#)  
[Genetic Predisposition to Disease](#) [Mental Disorders](#)  
[Multiple Sclerosis, Relapsing-Remitting](#) [Personality Tests](#) [Postmortem Changes](#) [Reward](#)  
[Schizophrenia](#) [Schizophrenia](#) [Schizophrenic Psychology](#) [Tobacco Use Disorder](#)  
[Weight Gain](#)

---

[服務條款](#) | [隱私權政策](#) | [著作及商標](#) | [網站地圖](#)

©2016 亞諾法生技股份有限公司 Abnova Corporation. 版權所有.