



SZABO SCANDIC

Part of Europa Biosite

Produktinformation



Forschungsprodukte & Biochemikalien



Zellkultur & Verbrauchsmaterial



Diagnostik & molekulare Diagnostik



Laborgeräte & Service

Weitere Information auf den folgenden Seiten!
See the following pages for more information!



Lieferung & Zahlungsart

siehe unsere [Liefer- und Versandbedingungen](#)

Zuschläge

- Mindermengenzuschlag
- Trockeneiszuschlag
- Gefahrgutzuschlag
- Expressversand

SZABO-SCANDIC HandelsgmbH

Quellenstraße 110, A-1100 Wien

T. +43(0)1 489 3961-0

F. +43(0)1 489 3961-7

mail@szabo-scandic.com

www.szabo-scandic.com

[linkedin.com/company/szaboscandic](https://www.linkedin.com/company/szaboscandic) 

SLC1A2 monoclonal antibody (M10), clone 4G8

Catalog # : H00006506-M10

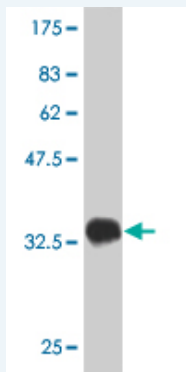
規格 : [100 ug]

[List All](#)

Specification

Product Description:	Mouse monoclonal antibody raised against a partial recombinant SLC1A2.
Immunogen:	SLC1A2 (NP_004162, 160 a.a. ~ 239 a.a) partial recombinant protein with GST tag. MW of the GST tag alone is 26 KDa.
Sequence:	DEVSSLDAFLLDIRNLFPENLVQACFQQIQTVTKKVLVAPPPDEEANATS AVWSLLNETVTEVPEETKMVIKKGLEFKDG
Host:	Mouse
Reactivity:	Human
Isotype:	IgG2a Kappa

Quality Control Testing: Antibody Reactive Against Recombinant Protein.



Western Blot detection against Immunogen (34.54 KDa) .

Storage Buffer: In 1x PBS, pH 7.4

Storage Instruction: Store at -20°C or lower. Aliquot to avoid repeated freezing and thawing.

MSDS: [Download](#)

Datasheet: [Download](#)

Applications

Western Blot (Recombinant protein)

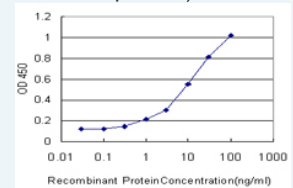
[Protocol Download](#)

Sandwich ELISA (Recombinant protein)

Application Image

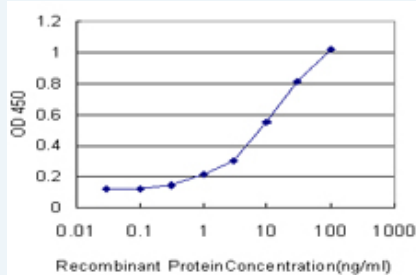
Western Blot (Recombinant protein)

Sandwich ELISA (Recombinant protein)



[enlarge](#)

ELISA



Detection limit for recombinant GST tagged SLC1A2 is approximately 0.3ng/ml as a capture antibody.

 [Protocol Download](#)

ELISA

Gene Information

Entrez GeneID: [6506](#)

GeneBank [NM_004171](#)

Accession#:

Protein [NP_004162](#)

Accession#:

Gene Name: SLC1A2

Gene Alias: EAAT2, GLT-1

Gene Description: solute carrier family 1 (glial high affinity glutamate transporter), member 2

Omim ID: [600300](#)

Gene Ontology: [Hyperlink](#)

Gene Summary: This gene encodes a member of a family of solute transporter proteins. The membrane-bound protein is the principal transporter that clears the excitatory neurotransmitter glutamate from the extracellular space at synapses in the central nervous system. Glutamate clearance is necessary for proper synaptic activation and to prevent neuronal damage from excessive activation of glutamate receptors. Mutations in and decreased expression of this protein are associated with amyotrophic lateral sclerosis. Alternatively spliced transcript variants of this gene have been described, but their full-length nature is not known. [provided by RefSeq]

Other Designations: excitatory amino acid transporter 2, excitotoxic amino acid transporter 2, glial high affinity glutamate transporter, glutamate/aspartate transporter II, sodium-dependent glutamate/aspartate transporter 2, solute carrier family 1, member 2

Gene Pathway

[Amyotrophic lateral sclerosis \(ALS\)](#)

Related Disease

[Alcoholism](#) [Child Development Disorders](#), [Pervasive Cognition](#)
[Genetic Predisposition to Disease](#) [Mental Disorders](#)
[Multiple Sclerosis](#), [Relapsing-Remitting](#) [Personality Tests](#) [Postmortem Changes](#) [Reward](#)
[Schizophrenia](#) [Schizophrenia](#) [Schizophrenic Psychology](#) [Tobacco Use Disorder](#)
[Weight Gain](#)

