



SZABO SCANDIC

Part of Europa Biosite

Produktinformation



Forschungsprodukte & Biochemikalien



Zellkultur & Verbrauchsmaterial



Diagnostik & molekulare Diagnostik



Laborgeräte & Service

Weitere Information auf den folgenden Seiten!
See the following pages for more information!



Lieferung & Zahlungsart

siehe unsere [Liefer- und Versandbedingungen](#)

Zuschläge

- Mindermengenzuschlag
- Trockeneiszuschlag
- Gefahrgutzuschlag
- Expressversand

SZABO-SCANDIC HandelsgmbH

Quellenstraße 110, A-1100 Wien

T. +43(0)1 489 3961-0

F. +43(0)1 489 3961-7

mail@szabo-scandic.com

www.szabo-scandic.com

[linkedin.com/company/szaboscandic](https://www.linkedin.com/company/szaboscandic) 

SLC1A6 monoclonal antibody (M01), clone 6D9

Catalog # : H00006511-M01

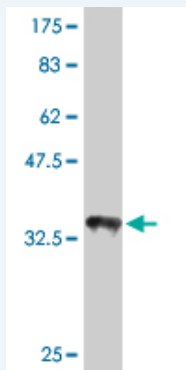
規格 : [100 ug]

List All

Specification

Product Description:	Mouse monoclonal antibody raised against a partial recombinant SLC1A6.
Immunogen:	SLC1A6 (NP_005062, 500 a.a. ~ 564 a.a) partial recombinant protein with GST tag. MW of the GST tag alone is 26 KDa.
Sequence:	LDRLRTMTNVLGDSIGAAVIEHLSQRELELQEAELTLP SLGKPYKSLMAQ EKGASRGRGGNESAM
Host:	Mouse
Reactivity:	Human
Isotype:	IgG1 Kappa

Quality Control Testing: Antibody Reactive Against Recombinant Protein.



Western Blot detection against Immunogen (32.89 KDa) .

Storage Buffer: In 1x PBS, pH 7.4

Storage Instruction: Store at -20°C or lower. Aliquot to avoid repeated freezing and thawing.

MSDS: [Download](#)

Datasheet: [Download](#)

Applications

Western Blot (Recombinant protein)

[Protocol Download](#)

ELISA

Gene Information

Entrez GeneID: [6511](#)

GeneBank [NM_005071](#)

Application Image

Western Blot (Recombinant protein)

ELISA

Accession#:

Protein [NP_005062](#)

Accession#:

Gene Name: SLC1A6

Gene Alias: EAAT4,MGC33092,MGC43671

Gene Description: solute carrier family 1 (high affinity aspartate/glutamate transporter), member 6

Omim ID: [600637](#)

Gene Ontology: [Hyperlink](#)

Other Designations: excitatory amino acid transporter 4

Related Disease

[Cognition](#) [Genetic Predisposition to Disease](#) [Hyperparathyroidism, Secondary](#)
[Mental Disorders](#) [Schizophrenia](#) [Schizophrenia](#) [Schizophrenic Psychology](#) [Weight Gain](#)

[服務條款](#) | [隱私權政策](#) | [著作及商標](#) | [網站地圖](#)

©2016 亞諾法生技股份有限公司 Abnova Corporation. 版權所有.