



# SZABO SCANDIC

Part of Europa Biosite

## Produktinformation



Forschungsprodukte & Biochemikalien



Zellkultur & Verbrauchsmaterial



Diagnostik & molekulare Diagnostik



Laborgeräte & Service

Weitere Information auf den folgenden Seiten!  
See the following pages for more information!



### Lieferung & Zahlungsart

siehe unsere [Liefer- und Versandbedingungen](#)

### Zuschläge

- Mindermengenzuschlag
- Trockeneiszuschlag
- Gefahrgutzuschlag
- Expressversand

### SZABO-SCANDIC HandelsgmbH

Quellenstraße 110, A-1100 Wien

T. +43(0)1 489 3961-0

F. +43(0)1 489 3961-7

[mail@szabo-scandic.com](mailto:mail@szabo-scandic.com)

[www.szabo-scandic.com](http://www.szabo-scandic.com)

[linkedin.com/company/szaboscandic](https://www.linkedin.com/company/szaboscandic) 

## SLC2A4 polyclonal antibody (A01)

Catalog # : H00006517-A01

規格 : [ 50 uL ]

List All

### Specification

**Product Description:** Mouse polyclonal antibody raised against a partial recombinant SLC2A4.

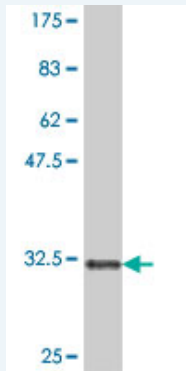
**Immunogen:** SLC2A4 (NP\_001033, 467 a.a. ~ 509 a.a) partial recombinant protein with GST tag.

**Sequence:** RVPETRGRTFDQISAAFHRTPSLLEQEVKPPSTELEYLGPDEND

**Host:** Mouse

**Reactivity:** Human

**Quality Control Testing:** Antibody Reactive Against Recombinant Protein.



Western Blot detection against Immunogen (30.84 KDa) .

**Storage Buffer:** 50 % glycerol

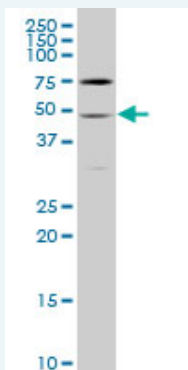
**Storage Instruction:** Store at -20°C or lower. Aliquot to avoid repeated freezing and thawing.

**MSDS:** [Download](#)

**Datasheet:** [Download](#)

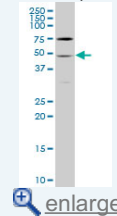
### Applications

#### Western Blot (Cell lysate)



### Application Image


#### Western Blot (Cell lysate)



#### Western Blot (Recombinant protein)

ELISA

SLC2A4 polyclonal antibody (A01), Lot # 051121JC01. Western Blot analysis of SLC2A4 expression in Daoy.

 [Protocol Download](#)

---

### Western Blot (Recombinant protein)

 [Protocol Download](#)

---

### ELISA

---

### Gene Information

**Entrez GeneID:** [6517](#)

**GeneBank** [NM\\_001042](#)

**Accession#:**

**Protein** [NP\\_001033](#)

**Accession#:**

**Gene Name:** SLC2A4

**Gene Alias:** GLUT4

**Gene Description:** solute carrier family 2 (facilitated glucose transporter), member 4

**Omim ID:** [138190](#)

**Gene Ontology:** [Hyperlink](#)

**Gene Summary:** This gene is a member of the solute carrier family 2 (facilitated glucose transporter) family and encodes a protein that functions as an insulin-regulated facilitative glucose transporter. In the absence of insulin, this integral membrane protein is sequestered within the cells of muscle and adipose tissue. Within minutes of insulin stimulation, the protein moves to the cell surface and begins to transport glucose across the cell membrane. Mutations in this gene have been associated with noninsulin-dependent diabetes mellitus (NIDDM). [provided by RefSeq]

**Other Designations:** glucose transporter 4,insulin-responsive glucose transporter type 4

---

### Gene Pathway

[Adipocytokine signaling pathway](#) [Insulin signaling pathway](#) [Type II diabetes mellitus](#)

---

### Related Disease

[Alzheimer Disease](#) [Alzheimer disease](#) [Atherosclerosis](#) [Calcinosis](#) [Cardiovascular Diseases](#) [Coronary Artery Disease](#) [Diabetes Complications](#) [Diabetes Mellitus, Type 2](#) [Edema](#) [Genetic Predisposition to Disease](#) [Insulin Resistance](#) [Lung Neoplasms](#) [Metabolic Syndrome X](#) [Neoplasms](#) [Obesity](#) [Obesity](#) [Osteoporosis](#) [Polycystic Ovary Syndrome](#) [Pulmonary Disease, Chronic Obstructive](#)

... see more