



SZABO SCANDIC

Part of Europa Biosite

Produktinformation



Forschungsprodukte & Biochemikalien



Zellkultur & Verbrauchsmaterial



Diagnostik & molekulare Diagnostik



Laborgeräte & Service

Weitere Information auf den folgenden Seiten!
See the following pages for more information!



Lieferung & Zahlungsart

siehe unsere [Liefer- und Versandbedingungen](#)

Zuschläge

- Mindermengenzuschlag
- Trockeneiszuschlag
- Gefahrgutzuschlag
- Expressversand

SZABO-SCANDIC HandelsgmbH

Quellenstraße 110, A-1100 Wien

T. +43(0)1 489 3961-0

F. +43(0)1 489 3961-7

mail@szabo-scandic.com

www.szabo-scandic.com

[linkedin.com/company/szaboscandic](https://www.linkedin.com/company/szaboscandic) 

SLC2A5 purified MaxPab mouse polyclonal antibody (B01P) MaxPab®

Catalog # : H00006518-B01P

規格 : [50 ug]

[List All](#)

Specification

Product Description: Mouse polyclonal antibody raised against a full-length human SLC2A5 protein.

Immunogen: SLC2A5 (NP_003030.1, 1 a.a. ~ 501 a.a) full-length human protein.

Sequence:
 MEQQDQSMKEGRLTLVLALATLIAAFGSSFQYGYNVAAVNSPALLMQQ
 FYNETYGRGTGEFMEFPLTLLWSVTVSMFPFGGFIGSLLVGPLVKNKFG
 RKGALLFNNIFSIVPAILMGCSRVSFELIISRLLVGICAGVSSNVPMYL
 GELAPKNLRGALGVVPQLFITVGLVAQIFGLRNLNANVDGWPIILLGLTGV
 PAALQLLLLPFPESPRYLLIQKKDEAAAKKALQTLRGWDSVDREVAEIR
 QEDEAEKAAGFISVLKLFMRSLRWQLLSIIVLMGGQQLSGVNAIYYAD
 QIYLSAGVPEEHVQYVTAGTGAVNVMTFCVAVVWELLGRRLLLLLGFSL
 CLIACCVLTAALALQDTVSWMPYISIVCISYVIGHALGPSPIPALLITEIFLQ
 SSRPSAFMVGGSVHWLSNFTVGLIFPFIQEGLGPYSFIVFAVICLLTTIYIF
 LVPETKAKTFIEINQIFTKMNKVSEVYPEKEELKELPPVTSEQ

Host: Mouse

Reactivity: Human

Quality Control Testing: Antibody reactive against mammalian transfected lysate.

Storage Buffer: In 1x PBS, pH 7.4

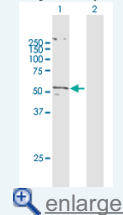
Storage Instruction: Store at -20°C or lower. Aliquot to avoid repeated freezing and thawing.


MSDS:  [Download](#)

Datasheet:  [Download](#)

Application Image

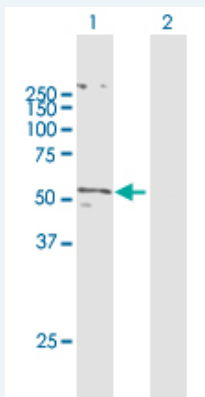
Western Blot (Transfected lysate)



 [enlarge](#)

Applications

Western Blot (Transfected lysate)



Western Blot analysis of SLC2A5 expression in transfected 293T cell line (H00006518-T01) by SLC2A5 MaxPab polyclonal antibody.

Lane 1: SLC2A5 transfected lysate(55.11 KDa).
 Lane 2: Non-transfected lysate.

Gene Information

Entrez GeneID: [6518](#)

**GeneBank
Accession#:** [NM_003039.1](#)

**Protein
Accession#:** [NP_003030.1](#)

Gene Name: SLC2A5

Gene Alias: GLUT5

**Gene
Description:** solute carrier family 2 (facilitated glucose/fructose transporter), member 5

Omim ID: [138230](#)

Gene Ontology: [Hyperlink](#)

**Other
Designations:** OTTHUMP00000001704,glucose transporter-like protein 5,solute carrier family 2 (facilitated glucose transporter), member 5

Related Disease

[Cardiovascular Diseases](#) [Diabetes Mellitus, Type 2](#) [Edema](#) [Tobacco Use Disorder](#)