



# SZABO SCANDIC

Part of Europa Biosite

## Produktinformation



Forschungsprodukte & Biochemikalien



Zellkultur & Verbrauchsmaterial



Diagnostik & molekulare Diagnostik



Laborgeräte & Service

Weitere Information auf den folgenden Seiten!  
See the following pages for more information!



### Lieferung & Zahlungsart

siehe unsere [Liefer- und Versandbedingungen](#)

### Zuschläge

- Mindermengenzuschlag
- Trockeneiszuschlag
- Gefahrgutzuschlag
- Expressversand

### SZABO-SCANDIC HandelsgmbH

Quellenstraße 110, A-1100 Wien

T. +43(0)1 489 3961-0

F. +43(0)1 489 3961-7

[mail@szabo-scandic.com](mailto:mail@szabo-scandic.com)

[www.szabo-scandic.com](http://www.szabo-scandic.com)

[linkedin.com/company/szaboscandic](https://www.linkedin.com/company/szaboscandic) 

## SLC2A5 293T Cell Transient Overexpression Lysate(Denatured)

Catalog # : H00006518-T01

規格 : [ 100 uL ]

[List All](#)

### Specification

**Transfected Cell Line:** 293T

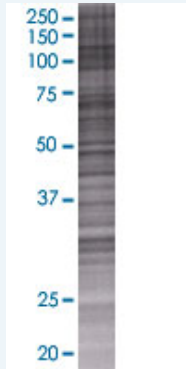
**Plasmid:** pCMV-SLC2A5 full-length

**Host:** Human

**Theoretical MW (kDa):** 55.22

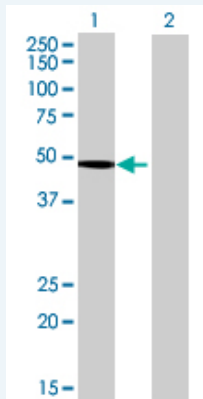
**Quality Control Testing:** Transient overexpression cell lysate was tested with Anti-SLC2A5 antibody ([H00006518-B01](#)) by Western Blots.

#### SDS-PAGE Gel



SLC2A5 transfected lysate.

#### Western Blot



Lane 1: SLC2A5 transfected lysate ( 55.22 KDa)

Lane 2: Non-transfected lysate.

**Storage Buffer:** 1X Sample Buffer (50 mM Tris-HCl, 2% SDS, 10% glycerol, 300 mM 2-mercaptoethanol, 0.01% Bromophenol blue)

**Storage Instruction:** Store at -80°C. Aliquot to avoid repeated freezing and thawing.

**MSDS:**  [Download](#)

### Applications

### Application Image

Western Blot

## Western Blot

### Gene Information

Entrez GeneID: [6518](#)

GeneBank Accession#: [NM\\_003039.1](#)

Protein Accession#: [NP\\_003030.1](#)

Gene Name: SLC2A5

Gene Alias: GLUT5

Gene Description: solute carrier family 2 (facilitated glucose/fructose transporter), member 5

Omim ID: [138230](#)

Gene Ontology: [Hyperlink](#)

Other Designations: OTTHUMP00000001704,glucose transporter-like protein 5,solute carrier family 2 (facilitated glucose transporter), member 5

### Related Disease

[Cardiovascular Diseases](#) [Diabetes Mellitus, Type 2](#) [Edema](#) [Tobacco Use Disorder](#)

[服務條款](#) | [隱私權政策](#) | [著作及商標](#) | [網站地圖](#)

©2016 亞諾法生技股份有限公司 Abnova Corporation. 版權所有.