



SZABO SCANDIC

Part of Europa Biosite

Produktinformation



Forschungsprodukte & Biochemikalien



Zellkultur & Verbrauchsmaterial



Diagnostik & molekulare Diagnostik



Laborgeräte & Service

Weitere Information auf den folgenden Seiten!
See the following pages for more information!



Lieferung & Zahlungsart

siehe unsere [Liefer- und Versandbedingungen](#)

Zuschläge

- Mindermengenzuschlag
- Trockeneiszuschlag
- Gefahrgutzuschlag
- Expressversand

SZABO-SCANDIC HandelsgmbH

Quellenstraße 110, A-1100 Wien

T. +43(0)1 489 3961-0

F. +43(0)1 489 3961-7

mail@szabo-scandic.com

www.szabo-scandic.com

[linkedin.com/company/szaboscandic](https://www.linkedin.com/company/szaboscandic) 

SLC3A1 monoclonal antibody (M01), clone 2F2

Catalog # : H00006519-M01

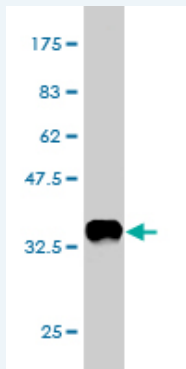
規格 : [100 ug]

[List All](#)

Specification

Product Description:	Mouse monoclonal antibody raised against a partial recombinant SLC3A1.
Immunogen:	SLC3A1 (AAH22386, 211 a.a. ~ 320 a.a) partial recombinant protein with GST tag. MW of the GST tag alone is 26 KDa.
Sequence:	FIPNHTSDKHIWFQLSRTRTGKYTDYYIWHDCCTHENGKTIPPNNWLSVYG NSSWHFDEVNRNQCYFHQFMKEQPDNLNFRNPDVQEEIKEILRFWLTGVD GFSLDAVKFLL
Host:	Mouse
Reactivity:	Human
Isotype:	IgG2a Kappa

Quality Control Testing: Antibody Reactive Against Recombinant Protein.



Western Blot detection against Immunogen (37.73 KDa) .

Storage Buffer: In 1x PBS, pH 7.4

Storage Instruction: Store at -20°C or lower. Aliquot to avoid repeated freezing and thawing.

MSDS: [Download](#)

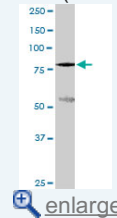
Datasheet: [Download](#)

Applications

Western Blot (Tissue lysate)

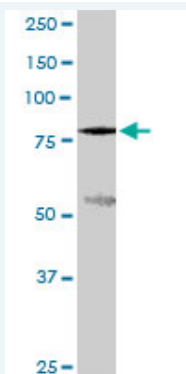
Application Image

Western Blot (Tissue lysate)



Western Blot (Recombinant protein)

ELISA



SLC3A1 monoclonal antibody (M01), clone 2F2. Western Blot analysis of SLC3A1 expression in human pancreas.

 [Protocol Download](#)

Western Blot (Recombinant protein)

 [Protocol Download](#)

ELISA

Gene Information

Entrez GeneID: [6519](#)

GeneBank [BC022386](#)

Accession#:

Protein [AAH22386](#)

Accession#:

Gene Name: SLC3A1

Gene Alias: ATR1,CSNU1,D2H,FLJ34681,NBAT,RBAT

Gene Description: solute carrier family 3 (cystine, dibasic and neutral amino acid transporters, activator of cystine, dibasic and neutral amino acid transport), member 1

Omim ID: [104614](#), [220100](#), [606407](#)

Gene Ontology: [Hyperlink](#)

Gene Summary: This gene encodes a type II membrane glycoprotein which is one of the components of the renal amino acid transporter which transports neutral and basic amino acids in the renal tubule and intestinal tract. Mutations and deletions in this gene are associated with cystinuria. Alternatively spliced transcript variants have been described, but their biological validity has not been determined. [provided by RefSeq]

Other Designations: B(0,+)-type amino acid transport protein,SLC3A1 variant B,SLC3A1 variant C,SLC3A1 variant D,SLC3A1 variant E,SLC3A1 variant F,SLC3A1 variant G,amino acid transporter 1,solute carrier family 3 (cystine, dibasic and neutral amino acid transporters), member

Related Disease

[Cardiomyopathy](#), [Hypertrophic Cystinuria](#) [Genetic Predisposition to Disease](#) [Hypertension](#)