



SZABO SCANDIC

Part of Europa Biosite

Produktinformation



Forschungsprodukte & Biochemikalien



Zellkultur & Verbrauchsmaterial



Diagnostik & molekulare Diagnostik



Laborgeräte & Service

Weitere Information auf den folgenden Seiten!
See the following pages for more information!



Lieferung & Zahlungsart

siehe unsere [Liefer- und Versandbedingungen](#)

Zuschläge

- Mindermengenzuschlag
- Trockeneiszuschlag
- Gefahrgutzuschlag
- Expressversand

SZABO-SCANDIC HandelsgmbH

Quellenstraße 110, A-1100 Wien

T. +43(0)1 489 3961-0

F. +43(0)1 489 3961-7

mail@szabo-scandic.com

www.szabo-scandic.com

[linkedin.com/company/szaboscandic](https://www.linkedin.com/company/szaboscandic) 

SLC3A2 MaxPab mouse polyclonal antibody (B01) MaxPab®

Catalog # : H00006520-B01

規格 : [50 uL]

[List All](#)

Specification

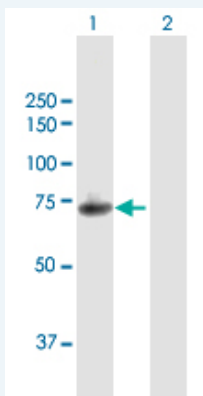
Product Description:	Mouse polyclonal antibody raised against a full-length human SLC3A2 protein.
Immunogen:	SLC3A2 (NP_001013269.1, 1 a.a. ~ 529 a.a) full-length human protein.
Sequence:	MSQDTEVDMKEVELNELEPEKQPMNAASGAAMSLAGAEKNGLVKIKVAE DEAEAAAAAKFTGLSKEELLKVAGSPGWVTRWALLLLFWLGWLGMLA GAVWIIVRAPRCRELPAQKWWHTGALYRIGDLQAFQGHGAGNLAGLKG RLDYLSLKVKGLVLGPIHKNQKDDVAQTDLLQIDPNFGSKEDFDSLLQS AKKKSIRVILDLPNYRGENSEWFSTQVDTVATKVKDALEFWLQAGVDGF QVRDIENLKDASSFLAEWQNITKGFSEDRLLIAGTNSSDLQQLSLESNK DLLLTSSYLSDSGSTGEHTKSLVTQYLNATGNRWCSWSLSQARLLTSFL PAQLLRLYQLMLFTLPGTPVFSYGDEIGLDAALPGQPMEAPVMLWDES SFPDIPGAVSANMTVKGQSEDPGSLLSLFRRLSDQRSKERSLLHGDFHA FSAGPGLFSYIRHWDQNERFLVVLNFGDVGLSAGLQASDLPASASLPAK ADLLLSTQPGREEGSPLELERLKLEPHEGLLLRFPYAA
Host:	Mouse
Reactivity:	Human
Quality Control Testing:	Antibody reactive against mammalian transfected lysate.
Storage Buffer:	No additive
Storage Instruction:	Store at -20°C or lower. Aliquot to avoid repeated freezing and thawing.
Note:	For IHC and IF applications, antibody purification with Protein A will be needed prior to use.

MSDS: [Download](#)

Datasheet: [Download](#)

Applications

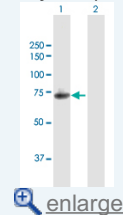
Western Blot (Transfected lysate)



Western Blot analysis of SLC3A2 expression in transfected 293T cell line ([H00006520-](#)

Application Image

Western Blot (Transfected lysate)



[enlarge](#)

T02) by SLC3A2 MaxPab polyclonal antibody.

Lane 1: SLC3A2 transfected lysate(57.9 KDa).

Lane 2: Non-transfected lysate.

 [Protocol Download](#)

Gene Information

Entrez GeneID: [6520](#)

GeneBank [NM_001013251.1](#)

Accession#:

Protein [NP_001013269.1](#)

Accession#:

Gene Name: SLC3A2

Gene Alias: 4F2,4F2HC,4T2HC,CD98,CD98HC,MDU1,NACAE

Gene Description: solute carrier family 3 (activators of dibasic and neutral amino acid transport), member 2

Omim ID: [158070](#)

Gene Ontology: [Hyperlink](#)

Gene Summary: This gene is a member of the solute carrier family and encodes a cell surface, transmembrane protein with an alpha amylase domain. The protein exists as the heavy chain of a heterodimer, covalently bound through di-sulfide bonds to one of several possible light chains. It associates with integrins and mediates integrin-dependent signaling related to normal cell growth and tumorigenesis. Alternate transcriptional splice variants, encoding different isoforms, have been characterized. [provided by RefSeq]

Other Designations: 4F2 cell-surface antigen heavy chain,4F2 heavy chain,CD98 heavy chain,antigen defined by monoclonal antibody 4F2, heavy chain,antigen identified by monoclonal antibodies 4F2, TRA1.10, TROP4, and T43,heavy chain,lymphocyte activation antigen 4F2 large subu

Related Disease

[Cardiovascular Diseases](#) [Diabetes Mellitus, Type 2](#) [Edema](#) [Lymphoma, Non-Hodgkin](#) [Multiple Myeloma](#)

[服務條款](#) | [隱私權政策](#) | [著作及商標](#) | [網站地圖](#)

©2016 亞諾法生技股份有限公司 Abnova Corporation. 版權所有.