



SZABO SCANDIC

Part of Europa Biosite

Produktinformation



Forschungsprodukte & Biochemikalien



Zellkultur & Verbrauchsmaterial



Diagnostik & molekulare Diagnostik



Laborgeräte & Service

Weitere Information auf den folgenden Seiten!
See the following pages for more information!



Lieferung & Zahlungsart

siehe unsere [Liefer- und Versandbedingungen](#)

Zuschläge

- Mindermengenzuschlag
- Trockeneiszuschlag
- Gefahrgutzuschlag
- Expressversand

SZABO-SCANDIC HandelsgmbH

Quellenstraße 110, A-1100 Wien

T. +43(0)1 489 3961-0

F. +43(0)1 489 3961-7

mail@szabo-scandic.com

www.szabo-scandic.com

[linkedin.com/company/szaboscandic](https://www.linkedin.com/company/szaboscandic) 

SLC3A2 purified MaxPab rabbit polyclonal antibody (D01P) MaxPab®

Catalog # : H00006520-D01P

規格 : [100 ug]

[List All](#)

Specification

Product Description:	Rabbit polyclonal antibody raised against a full-length human SLC3A2 protein.
Immunogen:	SLC3A2 (NP_001013269.1, 1 a.a. ~ 529 a.a) full-length human protein.
Sequence:	MSQDTEVDMKEVELNELEPEKQPMNAASGAAMSLAGAIEKNGLVKIKVAE DEAEAAAAAKFTGLSKEELLKVAGSPGWVTRWALLLLFWLWLGMLA GAVWIIVRAPRCRELPAQKWWHTGALYRIGDLQAFQGHGAGNLAGLKG RLDYLSSLKVKGLVLGPIHKNQKDDVAQTDLLQIDPNFGSKEDFDSLLQS AKKKSIRVILDTPNYRGENSWFSTQVDVTATKVKDALEFWLQAGVDGF QVRDIENLKDASSFLAEWQNITKGFSEDRLLIAGTNSSDLQQLSLLSENK DLLLSSYLSDSGSTGEHTKSLVTQYLNATGNRWCSWSLSQARLLTSFL PAQLLRLYQLMLFTLPGTPVFSYGDEIGLDAALPGQPMEAPVMLWDES SFPDIPGAVSANMTVKGQSEDPGSLLSLFRRLSDQRSKERSLLHGDFHA FSAGPGLFSYIRHWDQNERFLVVLNFGDVGLSAGLQASDLPASASLPAK ADLLLSTQPGREEGSPLELERLKLEPHEGLLLRFPYAA
Host:	Rabbit
Reactivity:	Human, Mouse, Rat
Quality Control Testing:	Antibody reactive against mammalian transfected lysate.
Storage Buffer:	In 1x PBS, pH 7.4
Storage Instruction:	Store at -20°C or lower. Aliquot to avoid repeated freezing and thawing.
MSDS:	Download
Datasheet:	Download

Publication Reference

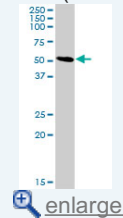
1. [Primary human leukocyte subsets differentially express vaccinia virus receptors enriched in lipid rafts.](#)
Byrd D, Amet T, Hu N, Lan J, Hu S, Yu QJ Virol. 2013 Jun 19.

Applications

Western Blot (Tissue lysate)

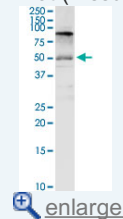
Application Image

Western Blot (Tissue lysate)



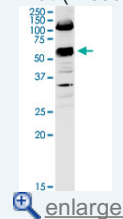
[enlarge](#)

Western Blot (Tissue lysate)



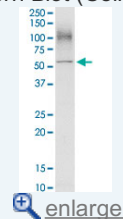
[enlarge](#)

Western Blot (Tissue lysate)



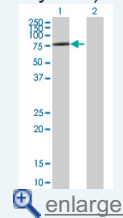
[enlarge](#)

Western Blot (Cell lysate)

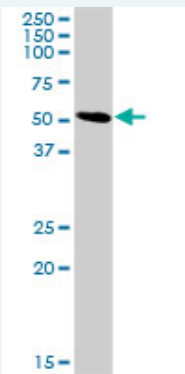


[enlarge](#)

Western Blot (Transfected lysate)



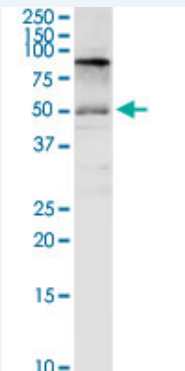
[enlarge](#)



SLC3A2 MaxPab rabbit polyclonal antibody. Western Blot analysis of SLC3A2 expression in mouse kidney.

 [Protocol Download](#)

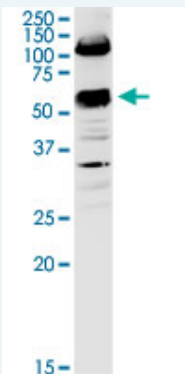
Western Blot (Tissue lysate)



SLC3A2 MaxPab rabbit polyclonal antibody. Western Blot analysis of SLC3A2 expression in mouse brain.

 [Protocol Download](#)

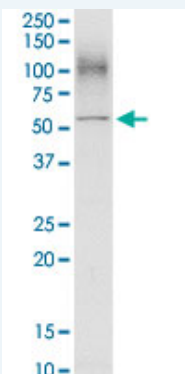
Western Blot (Tissue lysate)



SLC3A2 MaxPab rabbit polyclonal antibody. Western Blot analysis of SLC3A2 expression in rat brain.

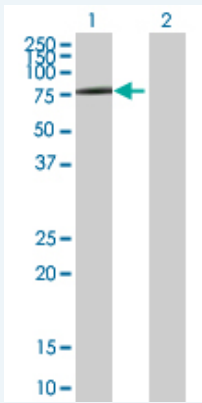
 [Protocol Download](#)

Western Blot (Cell lysate)



SLC3A2 MaxPab rabbit polyclonal antibody. Western Blot analysis of SLC3A2 expression in A-431.

Western Blot (Transfected lysate)



Western Blot analysis of SLC3A2 expression in transfected 293T cell line ([H00006520-T01](#)) by SLC3A2 MaxPab polyclonal antibody.

Lane 1: SLC3A2 transfected lysate(57.90 KDa).

Lane 2: Non-transfected lysate.

Gene Information

Entrez GeneID: [6520](#)

GeneBank Accession#: [NM_001013251.1](#)

Protein Accession#: [NP_001013269.1](#)

Gene Name: SLC3A2

Gene Alias: 4F2,4F2HC,4T2HC,CD98,CD98HC,MDU1,NACAE

Gene Description: solute carrier family 3 (activators of dibasic and neutral amino acid transport), member 2

Omim ID: [158070](#)

Gene Ontology: [Hyperlink](#)

Gene Summary: This gene is a member of the solute carrier family and encodes a cell surface, transmembrane protein with an alpha amylase domain. The protein exists as the heavy chain of a heterodimer, covalently bound through di-sulfide bonds to one of several possible light chains. It associates with integrins and mediates integrin-dependent signaling related to normal cell growth and tumorigenesis. Alternate transcriptional splice variants, encoding different isoforms, have been characterized. [provided by RefSeq]

Other Designations: 4F2 cell-surface antigen heavy chain,4F2 heavy chain,CD98 heavy chain,antigen defined by monoclonal antibody 4F2, heavy chain,antigen identified by monoclonal antibodies 4F2, TRA1.10, TROP4, and T43,heavy chain,lymphocyte activation antigen 4F2 large subu

Related Disease

[Cardiovascular Diseases](#) [Diabetes Mellitus, Type 2](#) [Edema](#) [Lymphoma, Non-Hodgkin](#) [Multiple Myeloma](#)

