



# SZABO SCANDIC

Part of Europa Biosite

## Produktinformation



Forschungsprodukte & Biochemikalien



Zellkultur & Verbrauchsmaterial



Diagnostik & molekulare Diagnostik



Laborgeräte & Service

Weitere Information auf den folgenden Seiten!  
See the following pages for more information!



### Lieferung & Zahlungsart

siehe unsere [Liefer- und Versandbedingungen](#)

### Zuschläge

- Mindermengenzuschlag
- Trockeneiszuschlag
- Gefahrgutzuschlag
- Expressversand

### SZABO-SCANDIC HandelsgmbH

Quellenstraße 110, A-1100 Wien

T. +43(0)1 489 3961-0

F. +43(0)1 489 3961-7

[mail@szabo-scandic.com](mailto:mail@szabo-scandic.com)

[www.szabo-scandic.com](http://www.szabo-scandic.com)

[linkedin.com/company/szaboscandic](https://www.linkedin.com/company/szaboscandic) 

# SLC4A1 purified MaxPab mouse polyclonal antibody (B01P) MaxPab®

Catalog # : H00006521-B01P

規格 : [ 50 ug ]

[List All](#)

## Specification

**Product Description:** Mouse polyclonal antibody raised against a full-length human SLC4A1 protein.

**Immunogen:** SLC4A1 (AAH99628.1, 1 a.a. ~ 911 a.a) full-length human protein.

**Sequence:**  
 MEELQDDYEDMMEENLEQEEYEDPDIHESQMEEPAHDTEATATDYHT  
 TSHPGTHKVYVELQELVMDEKNQELRWMEARWVQLEENLGENGAWG  
 RPHLSHLTFWSLLELRRVFTKGTVLLDLQETSLAGVANQLLDRFIFEDQI  
 RPQDREELLRALLLKSHAGELEALGGVKAVALTRSGDPSQPLLQHQSS  
 LETQLFCEQGDGGTEGHSPSGILEKIPDSEATLVLVGRADFLEQPVLG  
 FVRLQEAALAEVELPVPIRFLVLLGPEAPHIDYTLGRAAATLMSERVF  
 RIDAYMAQSRGELLHSLEGLDCSLVLPPTDAPSEQALLSLVPVQRELLR  
 RRYQSSPAKPDSSFYKGLDLNGGPDDPLQQTGQLFGGLVRDIRRRYPY  
 YLSDITDAFSPQVLAAVIFYAALSPAITFGGLLGEKTRNQMGVSELLIST  
 AVQGILFALLGAQPLLWGFSGPLLVFEEAFFSFCETNGLEYIVGRVWIG  
 FWLILLVVLVAFEGSFLVRFISRYTQEIFSFLISLIFYETFSKLKIFQDHPL  
 QKTYNNVLMVPKPQGPLPNTALLSLVLMAGTFFAMMLRKFKNSSYFP  
 GKLRVIGDFVGPISILIMLVDFFIQDTYTQKLSVPDGFKVSNSARGWV  
 IHPLGLRSEFPIWMMFASALPALLVFIIFLESQITTLIVSKPERKMKGSGF  
 HLDLLLWGMGGVAALFGMPWLSATTVRSVTHANALVMGKASTPGAA  
 AQIQEVKEQRISGLLVAVLVGLSILMEPILSRIPLAVLFGFLYMGVTSLSGI  
 QLFDRILLFFKPPKYHPDVPYVVRVKTWRMHLFTGIQICLAVLWVKSTP  
 ASLALPFVLILTVPLRRVLLPLIFRNVELQCLDADDAKATFDEEEGRDEYD  
 EVAMPV

**Host:** Mouse

**Reactivity:** Human

**Quality Control Testing:** Antibody reactive against mammalian transfected lysate.

**Storage Buffer:** In 1x PBS, pH 7.4

**Storage Instruction:** Store at -20°C or lower. Aliquot to avoid repeated freezing and thawing.

**MSDS:**  [Download](#)

**Datasheet:**  [Download](#)

## Publication Reference

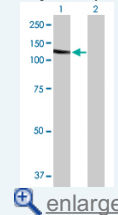
1. [Cryptotic Phenotype in Chronic Myeloid Leukemia: Contribution of Neutrophilic Cathepsin G.](#)  
 Govekar R, Kawle P, Thomas R, Advani S, Pv S, Zingde S. Anemia. 2012;2012:659303. Epub 2012 Mar 14.

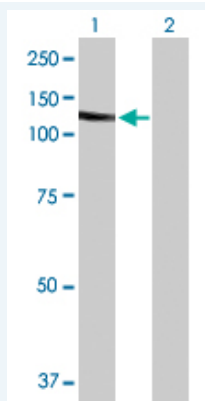
## Applications

**Western Blot (Transfected lysate)**

## Application Image

Western Blot (Transfected lysate)





Western Blot analysis of SLC4A1 expression in transfected 293T cell line ([H00006521-T01](#)) by SLC4A1 MaxPab polyclonal antibody.

Lane 1: SLC4A1 transfected lysate(100.21 KDa).

Lane 2: Non-transfected lysate.

 [Protocol Download](#)

## Gene Information

**Entrez GeneID:** [6521](#)

**GeneBank** [BC099628.3](#)

**Accession#:**

**Protein** [AAH99628.1](#)

**Accession#:**

**Gene Name:** SLC4A1

**Gene Alias:** AE1,BND3,CD233,DI,EMPB3,EPB3,FR,MGC116750,MGC116753,MGC126619,MGC126623,RTA1A,SW,WD,WD1,WR

**Gene Description:** solute carrier family 4, anion exchanger, member 1 (erythrocyte membrane protein band 3, Diego blood group)

**Omim ID:** [109270](#), [110500](#), [112010](#), [112050](#), [601550](#), [601551](#), [602722](#)

**Gene Ontology:** [Hyperlink](#)

**Gene Summary:** The protein encoded by this gene is part of the anion exchanger (AE) family and is expressed in the erythrocyte plasma membrane, where it functions as a chloride/bicarbonate exchanger involved in carbon dioxide transport from tissues to lungs. The protein comprises two domains that are structurally and functionally distinct. The N-terminal 40kDa domain is located in the cytoplasm and acts as an attachment site for the red cell skeleton by binding ankyrin. The glycosylated C-terminal membrane-associated domain contains 12-14 membrane spanning segments and carries out the stilbene disulphonate-sensitive exchange transport of anions. The cytoplasmic tail at the extreme C-terminus of the membrane domain binds carbonic anhydrase II. The encoded protein associates with the red cell membrane protein glycophorin A and this association promotes the correct folding and translocation of the exchanger. This protein is predominantly dimeric but forms tetramers in the presence of ankyrin. Many mutations in this gene are known in man, and these mutations can lead to two types of disease: destabilization of red cell membrane leading to hereditary spherocytosis, and defective kidney acid secretion leading to distal renal tubular acidosis. Other mutations that do not give rise to disease result in novel blood group antigens, which form the Diego blood group system. Southeast Asian ovalocytosis (SAO, Melanesian ovalocytosis) results from the heterozygous presence of a deletion in the encoded protein and is common in areas where Plasmodium falciparum malaria is endemic. One null mutation in this gene is known, resulting in very severe anemia and nephrocalcinosis. [provided by RefSeq

**Other** Froese blood group,Swann blood group,Waldner blood group,Wright  
**Designations:** blood group,anion exchange protein 1,anion exchanger 1,erythrocyte  
membrane protein band 3,erythroid anion exchange protein,solute  
carrier family 4, anion exchanger, member 1

---

#### Related Disease

Anemia Anemia, Sickle Cell Anemia, sickle cell Cardiovascular Diseases  
Diabetes Mellitus, Type 2 Edema Elliptocytosis, Hereditary  
Genetic Predisposition to Disease Hyperparathyroidism, Secondary Hypertension  
Malaria, Falciparum Priapism Spherocytosis, Hereditary Thalassemia Thalassemia

---

[服務條款](#) | [隱私權政策](#) | [著作及商標](#) | [網站地圖](#)

©2016 亞諾法生技股份有限公司 Abnova Corporation. 版權所有.