



SZABO SCANDIC

Part of Europa Biosite

Produktinformation



Forschungsprodukte & Biochemikalien



Zellkultur & Verbrauchsmaterial



Diagnostik & molekulare Diagnostik



Laborgeräte & Service

Weitere Information auf den folgenden Seiten!
See the following pages for more information!



Lieferung & Zahlungsart

siehe unsere [Liefer- und Versandbedingungen](#)

Zuschläge

- Mindermengenzuschlag
- Trockeneiszuschlag
- Gefahrgutzuschlag
- Expressversand

SZABO-SCANDIC HandelsgmbH

Quellenstraße 110, A-1100 Wien

T. +43(0)1 489 3961-0

F. +43(0)1 489 3961-7

mail@szabo-scandic.com

www.szabo-scandic.com

[linkedin.com/company/szaboscandic](https://www.linkedin.com/company/szaboscandic) 

SLC5A1 purified MaxPab rabbit polyclonal antibody (D01P) MaxPab®

Catalog # : H00006523-D01P

規格 : [100 ug]

[List All](#)

Specification

Product Description:	Rabbit polyclonal antibody raised against a full-length human SLC5A1 protein.
Immunogen:	SLC5A1 (AAI46581.1, 1 a.a. ~ 664 a.a) full-length human protein.
Sequence:	MDSSTWSPKTTAVTRPVETHELIRNAADISIVYFVVVMAVGLWAMFSTN RGTVGGFFLAGRSMWWWPIGASLFASNIGSGHFVGLAGTGAASGIAIGG FEWNALVLVVLGWLFVPIYKAGVVTMPEYLRKRFGGQRIQVYLSLLSL LLYIFTKISADIFSGAIFINLALGLNLYLAIFLLLALTYITGGAAVYTDTL QTVIMLVGSLILTGFAFHEVGGYDAFMEKYMKAIPTIVSDGNTTFQEKC YTPRADSFHIFRDPLTGDLPWPGFIFGMSILTLWYWCTDQVIVQRCLSAKN MSHVKGGCILCGYLKLMPMFIMVMPGMISRILYTEKIACVPSECEKYCGT KVGCTNIAYPTLVVELMPNGLRGLMLSVMLASLMSLT SIFNSASTLFTM DIYAKVRKRASEKELMIAGRLFILVLIGISIAWVPIVQSAQSGQLFDYIQSITS YLGPIIAAVFLLAIFWKRVNEPGAFAFWGLILGLLIGISRMITEFAYGTGSCME PSNCPTIICGVHYLYFAILFAISFITIVISLLTKPIPDVHLYRLCWSLRNSKE ERIDLDAEEENIQEGPKETIEIETQVPEKKKGIFRRAYDLFCGLEQHGAPK MTEEEEKAMKMKMTDTSEKPLWRTLVLNVNGIILVTVAVFCHAYFA
Host:	Rabbit
Reactivity:	Human, Mouse
Quality Control Testing:	Antibody reactive against mammalian transfected lysate.
Storage Buffer:	In 1x PBS, pH 7.4
Storage Instruction:	Store at -20°C or lower. Aliquot to avoid repeated freezing and thawing.
MSDS:	Download
Datasheet:	Download

Publication Reference

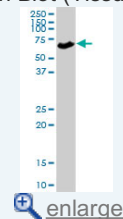
1. [Interleukin-1beta reduces galactose transport in intestinal epithelial cells in a NF-kB and protein kinase C-dependent manner.](#)
Vinales C, Gascon S, Barranquero C, Osada J, Rodriguez-Yoldi MJ. *Vet Immunol Immunopathol.* 2013 Jul 11. pii: S0165-2427(13)00198-0. doi: 10.1016/j.vetimm.2013.06.016.

Applications

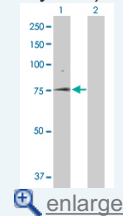
Western Blot (Tissue lysate)

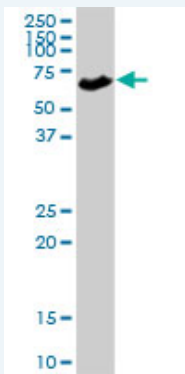
Application Image

Western Blot (Tissue lysate)



Western Blot (Transfected lysate)

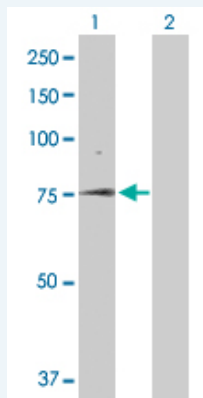




SLC5A1 MaxPab rabbit polyclonal antibody. Western Blot analysis of SLC5A1 expression in mouse lung.

 [Protocol Download](#)

Western Blot (Transfected lysate)



Western Blot analysis of SLC5A1 expression in transfected 293T cell line ([H00006523-T02](#)) by SLC5A1 MaxPab polyclonal antibody.

Lane 1: SLC5A1 transfected lysate(73.04 KDa).
Lane 2: Non-transfected lysate.

 [Protocol Download](#)

Gene Information

Entrez GeneID: [6523](#)

GeneBank Accession#: [BC146580](#)

Protein Accession#: [AA146581.1](#)

Gene Name: SLC5A1

Gene Alias: D22S675,NAGT,SGLT1

Gene Description: solute carrier family 5 (sodium/glucose cotransporter), member 1

Omim ID: [182380](#), [606824](#)

Gene Ontology: [Hyperlink](#)

Gene Summary: Glucose transporters are integral membrane proteins that mediate the transport of glucose and structurally-related substances across cellular membranes. Two families of glucose transporter have been identified: the facilitated-diffusion glucose transporter family (GLUT family), also known as 'uniporters,' and the sodium-dependent glucose transporter family (SGLT family), also known as 'cotransporters' or 'symporters' (Wright et al., 1994 [PubMed 7823022]). The SLC5A1 gene encodes a protein that is involved in the active transport of glucose and galactose

into eukaryotic and some prokaryotic cells.[supplied by OMIM

Other Human Na⁺/glucose cotransporter 1 mRNA, complete
Designations: cds,sodium/glucose cotransporter 1,solute carrier family 5
(sodium/glucose transporter), member 1

Related Disease

Genetic Predisposition to Disease Hyperparathyroidism, Secondary Tobacco Use Disorder

[服務條款](#) | [隱私權政策](#) | [著作及商標](#) | [網站地圖](#)

©2016 亞諾法生技股份有限公司 Abnova Corporation. 版權所有.