



SZABO SCANDIC

Part of Europa Biosite

Produktinformation



Forschungsprodukte & Biochemikalien



Zellkultur & Verbrauchsmaterial



Diagnostik & molekulare Diagnostik



Laborgeräte & Service

Weitere Information auf den folgenden Seiten!
See the following pages for more information!



Lieferung & Zahlungsart

siehe unsere [Liefer- und Versandbedingungen](#)

Zuschläge

- Mindermengenzuschlag
- Trockeneiszuschlag
- Gefahrgutzuschlag
- Expressversand

SZABO-SCANDIC HandelsgmbH

Quellenstraße 110, A-1100 Wien

T. +43(0)1 489 3961-0

F. +43(0)1 489 3961-7

mail@szabo-scandic.com

www.szabo-scandic.com

[linkedin.com/company/szaboscandic](https://www.linkedin.com/company/szaboscandic) 

SLC5A1 293T Cell Transient Overexpression Lysate(Denatured)

Catalog # : H00006523-T02

規格 : [100 uL]

List All

Specification

Transfected Cell Line: 293T

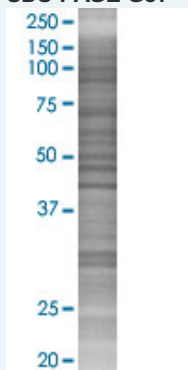
Plasmid: pCMV-SLC5A1 full-length

Host: Human

Theoretical MW (kDa): 73.04

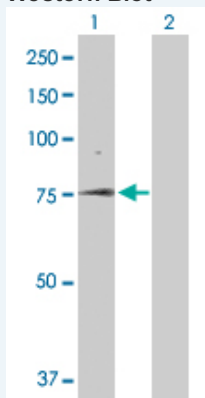
Quality Control Testing: Transient overexpression cell lysate was tested with Anti-SLC5A1 antibody ([H00006523-D01P](#)) by Western Blots.

SDS-PAGE Gel



SLC5A1 transfected lysate.

Western Blot



Lane 1: SLC5A1 transfected lysate (73.04 KDa)

Lane 2: Non-transfected lysate.

Storage Buffer: 1X Sample Buffer (50 mM Tris-HCl, 2% SDS, 10% glycerol, 300 mM 2-mercaptoethanol, 0.01% Bromophenol blue)

Storage Instruction: Store at -80°C. Aliquot to avoid repeated freezing and thawing.

MSDS:  [Download](#)

Applications

Western Blot

Gene Information

Entrez GeneID: [6523](#)

GeneBank [BC146580](#)
Accession#:

Protein [AAI46581.1](#)
Accession#:

Gene Name: SLC5A1

Gene Alias: D22S675,NAGT,SGLT1

Gene Description: solute carrier family 5 (sodium/glucose cotransporter), member 1

Omim ID: [182380](#), [606824](#)

Gene Ontology: [Hyperlink](#)

Gene Summary: Glucose transporters are integral membrane proteins that mediate the transport of glucose and structurally-related substances across cellular membranes. Two families of glucose transporter have been identified: the facilitated-diffusion glucose transporter family (GLUT family), also known as 'uniporters,' and the sodium-dependent glucose transporter family (SGLT family), also known as 'cotransporters' or 'symporters' (Wright et al., 1994 [PubMed 7823022]). The SLC5A1 gene encodes a protein that is involved in the active transport of glucose and galactose into eukaryotic and some prokaryotic cells.[supplied by OMIM]

Other Designations: Human Na⁺/glucose cotransporter 1 mRNA, complete cds,sodium/glucose cotransporter 1,solute carrier family 5 (sodium/glucose transporter), member 1

Related Disease

[Genetic Predisposition to Disease Hyperparathyroidism, Secondary Tobacco Use Disorder](#)