



SZABO SCANDIC

Part of Europa Biosite

Produktinformation



Forschungsprodukte & Biochemikalien



Zellkultur & Verbrauchsmaterial



Diagnostik & molekulare Diagnostik



Laborgeräte & Service

Weitere Information auf den folgenden Seiten!
See the following pages for more information!



Lieferung & Zahlungsart

siehe unsere [Liefer- und Versandbedingungen](#)

Zuschläge

- Mindermengenzuschlag
- Trockeneiszuschlag
- Gefahrgutzuschlag
- Expressversand

SZABO-SCANDIC HandelsgmbH

Quellenstraße 110, A-1100 Wien

T. +43(0)1 489 3961-0

F. +43(0)1 489 3961-7

mail@szabo-scandic.com

www.szabo-scandic.com

[linkedin.com/company/szaboscandic](https://www.linkedin.com/company/szaboscandic) 

SLC5A2 monoclonal antibody (M01), clone 3G8

Catalog # : H00006524-M01

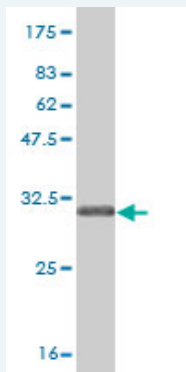
規格 : [100 ug]

List All

Specification

| | |
|-----------------------------|---|
| Product Description: | Mouse monoclonal antibody raised against a partial recombinant SLC5A2. |
| Immunogen: | SLC5A2 (NP_003032.1, 228 a.a. ~ 277 a.a) partial recombinant protein with GST tag. MW of the GST tag alone is 26 KDa. |
| Sequence: | GLFDKYLGAATSLTVSEDPVAGNISSFCYRPRPDSYHLLRHPVTGDLPW P |
| Host: | Mouse |
| Reactivity: | Human |
| Isotype: | IgG2a Kappa |

Quality Control Testing: Antibody Reactive Against Recombinant Protein.



Western Blot detection against Immunogen (31.24 KDa) .

Storage Buffer: In 1x PBS, pH 7.4

Storage Instruction: Store at -20°C or lower. Aliquot to avoid repeated freezing and thawing.

MSDS: [Download](#)

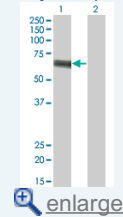
Datasheet: [Download](#)

Applications

Western Blot (Transfected lysate)

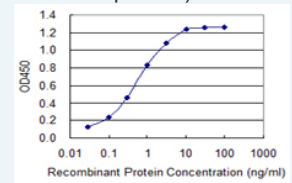
Application Image

Western Blot (Transfected lysate)



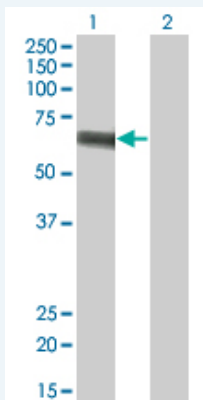
Western Blot (Recombinant protein)

Sandwich ELISA (Recombinant protein)



[enlarge](#)

ELISA



Western Blot analysis of SLC5A2 expression in transfected 293T cell line by SLC5A2 monoclonal antibody (M01), clone 3G8.

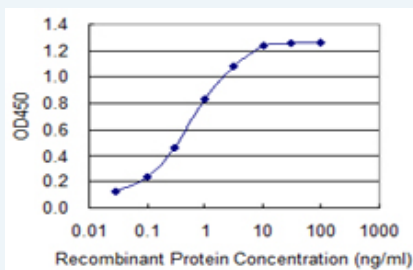
Lane 1: SLC5A2 transfected lysate(72.9 KDa).
Lane 2: Non-transfected lysate.

[Protocol Download](#)

Western Blot (Recombinant protein)

[Protocol Download](#)

Sandwich ELISA (Recombinant protein)



Detection limit for recombinant GST tagged SLC5A2 is 0.03 ng/ml as a capture antibody.

[Protocol Download](#)

ELISA

Gene Information

Entrez GeneID: [6524](#)

GeneBank [NM_003041](#)

Accession#:

Protein [NP_003032.1](#)

Accession#:

Gene Name: SLC5A2

Gene Alias: SGLT2

Gene Description: solute carrier family 5 (sodium/glucose cotransporter), member 2

Omim ID: [182381](#), [233100](#)

Gene Ontology: [Hyperlink](#)

Gene Summary: This gene encodes a member of the sodium glucose cotransporter family which are sodium-dependent glucose transport proteins. The encoded protein is the major cotransporter involved in glucose reabsorption in the kidney. Mutations in this gene are associated with renal glucosuria. [provided by RefSeq]

Other OTTHUMP00000163298,low affinity sodium-glucose
Designations: cotransporter,sodium/glucose cotransporter,solute carrier family 5
(sodium/glucose transporter), member 2

[服務條款](#) | [隱私權政策](#) | [著作及商標](#) | [網站地圖](#)

©2016 亞諾法生技股份有限公司 Abnova Corporation. 版權所有.