



SZABO SCANDIC

Part of Europa Biosite

Produktinformation



Forschungsprodukte & Biochemikalien



Zellkultur & Verbrauchsmaterial



Diagnostik & molekulare Diagnostik



Laborgeräte & Service

Weitere Information auf den folgenden Seiten!
See the following pages for more information!



Lieferung & Zahlungsart

siehe unsere [Liefer- und Versandbedingungen](#)

Zuschläge

- Mindermengenzuschlag
- Trockeneiszuschlag
- Gefahrgutzuschlag
- Expressversand

SZABO-SCANDIC HandelsgmbH

Quellenstraße 110, A-1100 Wien

T. +43(0)1 489 3961-0

F. +43(0)1 489 3961-7

mail@szabo-scandic.com

www.szabo-scandic.com

[linkedin.com/company/szaboscandic](https://www.linkedin.com/company/szaboscandic) 

SLC5A3 monoclonal antibody (M02), clone 3A6

Catalog # : H00006526-M02

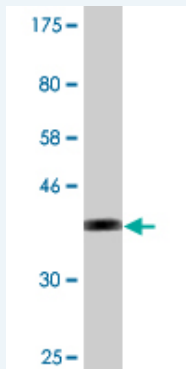
規格 : [100 ug]

[List All](#)

Specification

Product Description:	Mouse monoclonal antibody raised against a partial recombinant SLC5A3.
Immunogen:	SLC5A3 (NP_008864, 533 a.a. ~ 641 a.a) partial recombinant protein with GST tag. MW of the GST tag alone is 26 KDa.
Sequence:	TPPPTKEQIRTTTFWSKKNLWKENCSPKEEPYKMQEKSILRCSENNETINHIIPNGKSEDSIKGLQPEDVNLLVTCREEGNPVASLGHSEAETPVDAYSNGQAALMGE
Host:	Mouse
Reactivity:	Human
Isotype:	IgG1 Kappa

Quality Control Testing: Antibody Reactive Against Recombinant Protein.



Western Blot detection against Immunogen (37.73 KDa) .

Storage Buffer: In 1x PBS, pH 7.4

Storage Instruction: Store at -20°C or lower. Aliquot to avoid repeated freezing and thawing.

MSDS: [Download](#)

Datasheet: [Download](#)

Publication Reference

1. [Elevated extracellular glucose and uncontrolled type 1 diabetes enhance NFAT5 signaling and disrupt the transverse tubular network in mouse skeletal muscle.](#) Hernandez-Ochoa EO, Robison P, Contreras M, Shen T, Zhao Z, Schneider MF. *Exp Biol Med* (Maywood). 2012 Sep 1;237(9):1068-83. Epub 2012 Sep 10.

Applications

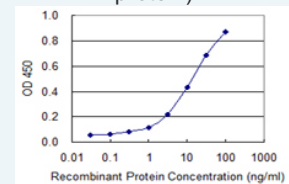
Western Blot (Recombinant protein)

[Protocol Download](#)

Application Image

Western Blot (Recombinant protein)

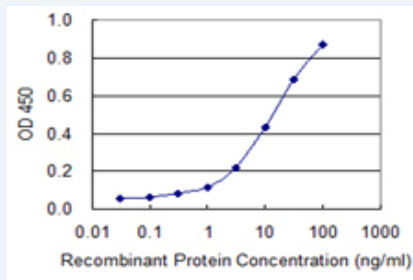
Sandwich ELISA (Recombinant protein)



[enlarge](#)

ELISA

Sandwich ELISA (Recombinant protein)



Detection limit for recombinant GST tagged SLC5A3 is 0.3 ng/ml as a capture antibody.

 [Protocol Download](#)

ELISA

Gene Information

Entrez GeneID: [6526](#)

GeneBank [NM_006933](#)
Accession#:

Protein [NP_008864](#)
Accession#:

Gene Name: SLC5A3

Gene Alias: SMIT,SMIT2

Gene Description: solute carrier family 5 (sodium/myo-inositol cotransporter), member 3

Omim ID: [600444](#)

Gene Ontology: [Hyperlink](#)

Other Designations: OTTHUMP00000068543,human solute carrier family 5, member 3, Sodium/myo-inositol cotransporter,sodium/myo-inositol cotransporter 1,solute carrier family 5 (inositol transporter), member 3,solute carrier family 5 (inositol transporters), member 3

Related Disease

[Coronary Artery Disease](#) [Coronary Disease](#) [Genetic Predisposition to Disease](#)
[Myocardial Infarction](#)

[服務條款](#) | [隱私權政策](#) | [著作及商標](#) | [網站地圖](#)

©2016 亞諾法生技股份有限公司 Abnova Corporation. 版權所有.