



SZABO SCANDIC

Part of Europa Biosite

Produktinformation



Forschungsprodukte & Biochemikalien



Zellkultur & Verbrauchsmaterial



Diagnostik & molekulare Diagnostik



Laborgeräte & Service

Weitere Information auf den folgenden Seiten!
See the following pages for more information!



Lieferung & Zahlungsart

siehe unsere [Liefer- und Versandbedingungen](#)

Zuschläge

- Mindermengenzuschlag
- Trockeneiszuschlag
- Gefahrgutzuschlag
- Expressversand

SZABO-SCANDIC HandelsgmbH

Quellenstraße 110, A-1100 Wien

T. +43(0)1 489 3961-0

F. +43(0)1 489 3961-7

mail@szabo-scandic.com

www.szabo-scandic.com

[linkedin.com/company/szaboscandic](https://www.linkedin.com/company/szaboscandic) 

SLC6A3 polyclonal antibody (A01)

Catalog # : H00006531-A01

規格 : [50 uL]

List All

Specification

Product Description: Mouse polyclonal antibody raised against a partial recombinant SLC6A3.

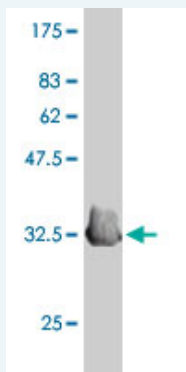
Immunogen: SLC6A3 (NP_001035, 161 a.a. ~ 237 a.a) partial recombinant protein with GST tag.

Sequence: AWALHYLFSSFTTELPWIHCNNSWNSPNCSDAHPGDSSGDSSGLNDTFGTTPAAEYFERGVLHLHQSHGIDDLGPPR

Host: Mouse

Reactivity: Human

Quality Control Testing: Antibody Reactive Against Recombinant Protein.



Western Blot detection against Immunogen (34.58 KDa) .

Storage Buffer: 50 % glycerol

Storage Instruction: Store at -20°C or lower. Aliquot to avoid repeated freezing and thawing.

MSDS: [Download](#)

Datasheet: [Download](#)

Applications

Western Blot (Recombinant protein)

[Protocol Download](#)

ELISA

Gene Information

Entrez GeneID: [6531](#)

GeneBank Accession#: [NM_001044](#)

Application Image

Western Blot (Recombinant protein)

ELISA

Protein [NP_001035](#)

Accession#:

Gene Name: SLC6A3

Gene Alias: DAT,DAT1

Gene Description: solute carrier family 6 (neurotransmitter transporter, dopamine), member 3

Omim ID: [126455](#), [143465](#), [188890](#)

Gene Ontology: [Hyperlink](#)

Gene Summary: The dopamine transporter (DAT1) mediates the active reuptake of dopamine from the synapse and is a principal regulator of dopaminergic neurotransmission. The DAT1 gene has been implicated in human disorders such as parkinsonism, Tourette syndrome, and substance abuse (Vandenbergh et al., 1992 [PubMed 1359373]).[supplied by OMIM]

Other Designations: dopamine transporter,variable number tandem repeat (VNTR)

Gene Pathway

[Parkinson's disease](#)

Related Disease

[Acute Disease](#) [Alcohol Withdrawal Delirium](#) [Alcohol Withdrawal Seizures](#) [Alcoholism](#)
[Alcohol-Related Disorders](#) [Alzheimer Disease](#) [Alzheimer disease](#)
[Amphetamine-Related Disorders](#) [Anorexia Nervosa](#) [Antisocial Personality Disorder](#)
[Anxiety Disorders](#) [Appetite Arousal](#) [Association Learning](#) [Atrophy](#) [Attention](#)
[Attention Deficit and Disruptive Behavior Disorders](#)
[Attention Deficit Disorder with Hyperactivity](#) [Auditory Perception](#)

... see more

[服務條款](#) | [隱私權政策](#) | [著作及商標](#) | [網站地圖](#)

©2016 亞諾法生技股份有限公司 Abnova Corporation. 版權所有.