



SZABO SCANDIC

Part of Europa Biosite

Produktinformation



Forschungsprodukte & Biochemikalien



Zellkultur & Verbrauchsmaterial



Diagnostik & molekulare Diagnostik



Laborgeräte & Service

Weitere Information auf den folgenden Seiten!
See the following pages for more information!



Lieferung & Zahlungsart

siehe unsere [Liefer- und Versandbedingungen](#)

Zuschläge

- Mindermengenzuschlag
- Trockeneiszuschlag
- Gefahrgutzuschlag
- Expressversand

SZABO-SCANDIC HandelsgmbH

Quellenstraße 110, A-1100 Wien

T. +43(0)1 489 3961-0

F. +43(0)1 489 3961-7

mail@szabo-scandic.com

www.szabo-scandic.com

[linkedin.com/company/szaboscandic](https://www.linkedin.com/company/szaboscandic) 

SLC6A3 293T Cell Transient Overexpression Lysate(Denatured)

Catalog # : H00006531-T02

規格 : [100 uL]

List All

Specification

Transfected Cell Line: 293T

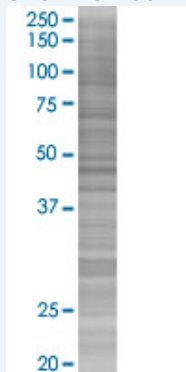
Plasmid: pCMV-SLC6A3 full-length

Host: Human

Theoretical MW (kDa): 68.5

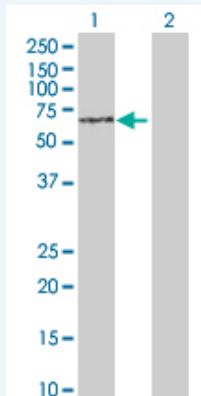
Quality Control Testing: Transient overexpression cell lysate was tested with Anti-SLC6A3 antibody (H00006531-D01P) by Western Blots.

SDS-PAGE Gel



SLC6A3 transfected lysate.

Western Blot



Lane 1: SLC6A3 transfected lysate (68.50 KDa)

Lane 2: Non-transfected lysate.

Storage Buffer: 1X Sample Buffer (50 mM Tris-HCl, 2% SDS, 10% glycerol, 300 mM 2-mercaptoethanol, 0.01% Bromophenol blue)

Storage Instruction: Store at -80°C. Aliquot to avoid repeated freezing and thawing.

MSDS:  [Download](#)

Applications

Western Blot

Gene Information

Entrez GeneID: [6531](#)

GeneBank Accession#: [NM_001044.2](#)

Protein Accession#: [NP_001035.1](#)

Gene Name: SLC6A3

Gene Alias: DAT, DAT1

Gene Description: solute carrier family 6 (neurotransmitter transporter, dopamine), member 3

Omim ID: [126455](#), [143465](#), [188890](#)

Gene Ontology: [Hyperlink](#)

Gene Summary: The dopamine transporter (DAT1) mediates the active reuptake of dopamine from the synapse and is a principal regulator of dopaminergic neurotransmission. The DAT1 gene has been implicated in human disorders such as parkinsonism, Tourette syndrome, and substance abuse (Vandenberg et al., 1992 [PubMed 1359373]). [supplied by OMIM]

Other Designations: dopamine transporter, variable number tandem repeat (VNTR)

Gene Pathway

[Parkinson's disease](#)

Related Disease

[Acute Disease](#) [Alcohol Withdrawal Delirium](#) [Alcohol Withdrawal Seizures](#) [Alcoholism](#)
[Alcohol-Related Disorders](#) [Alzheimer Disease](#) [Alzheimer disease](#)
[Amphetamine-Related Disorders](#) [Anorexia Nervosa](#) [Antisocial Personality Disorder](#)
[Anxiety Disorders](#) [Appetite Arousal](#) [Association Learning](#) [Atrophy](#) [Attention](#)
[Attention Deficit and Disruptive Behavior Disorders](#)
[Attention Deficit Disorder with Hyperactivity](#) [Auditory Perception](#)

... see more