



# SZABO SCANDIC

Part of Europa Biosite

## Produktinformation



Forschungsprodukte & Biochemikalien



Zellkultur & Verbrauchsmaterial



Diagnostik & molekulare Diagnostik



Laborgeräte & Service

Weitere Information auf den folgenden Seiten!  
See the following pages for more information!



### Lieferung & Zahlungsart

siehe unsere [Liefer- und Versandbedingungen](#)

### Zuschläge

- Mindermengenzuschlag
- Trockeneiszuschlag
- Gefahrgutzuschlag
- Expressversand

### SZABO-SCANDIC HandelsgmbH

Quellenstraße 110, A-1100 Wien

T. +43(0)1 489 3961-0

F. +43(0)1 489 3961-7

[mail@szabo-scandic.com](mailto:mail@szabo-scandic.com)

[www.szabo-scandic.com](http://www.szabo-scandic.com)

[linkedin.com/company/szaboscandic](https://www.linkedin.com/company/szaboscandic) 

## SLC6A11 monoclonal antibody (M10), clone 2C3

Catalog # : H00006538-M10

規格 : [ 100 ug ]

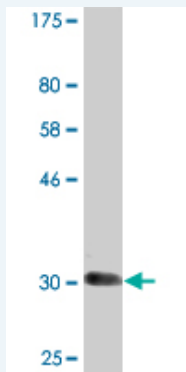
[List All](#)

### Specification

<b>Product Description:</b>	Mouse monoclonal antibody raised against a partial recombinant SLC6A11.
<b>Immunogen:</b>	SLC6A11 (NP_055044.1, 164 a.a. ~ 225 a.a) partial recombinant protein with GST tag. MW of the GST tag alone is 26 KDa.
<b>Sequence:</b>	TELPWATCGHEWNTENCVEFQKLNVSNYSHVSLQNATSPVMEFWEHRV LAISDGIHIGNLR
<b>Host:</b>	Mouse
<b>Reactivity:</b>	Human
<b>Isotype:</b>	IgG2a Kappa

**Quality Control** Antibody Reactive Against Recombinant Protein.

**Testing:**



Western Blot detection against Immunogen (32.56 KDa) .

**Storage Buffer:** In 1x PBS, pH 7.4

**Storage Instruction:** Store at -20°C or lower. Aliquot to avoid repeated freezing and thawing.

**MSDS:** [Download](#)

**Datasheet:** [Download](#)

### Applications

**Western Blot (Recombinant protein)**

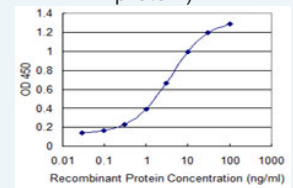
[Protocol Download](#)

**Sandwich ELISA (Recombinant protein)**

### Application Image

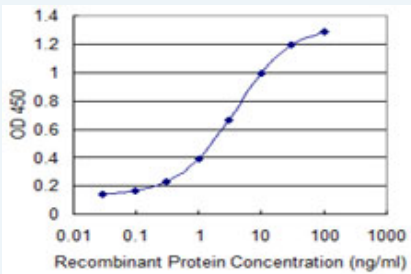
Western Blot (Recombinant protein)

Sandwich ELISA (Recombinant protein)



[enlarge](#)

ELISA



Detection limit for recombinant GST tagged SLC6A11 is 0.1 ng/ml as a capture antibody.

 [Protocol Download](#)

## ELISA

### Gene Information

Entrez GeneID: [6538](#)

GeneBank [NM\\_014229](#)

Accession#:

Protein [NP\\_055044.1](#)

Accession#:

Gene Name: SLC6A11

Gene Alias: GAT-3,GAT3

Gene Description: solute carrier family 6 (neurotransmitter transporter, GABA), member 11

Omim ID: [607952](#)

Gene Ontology: [Hyperlink](#)

**Gene Summary:** Gamma-aminobutyric acid (GABA) is a major inhibitory neurotransmitter. GABAergic neurotransmission is terminated by the uptake of GABA into the presynaptic terminal and the surrounding astroglial cells by sodium-dependent transporters, such as SLC6A11. [supplied by OMIM]

Other Designations: -

### Related Disease

[Disease Models, Animal Dyskinesia, Drug-Induced Genetic Predisposition to Disease Hyperparathyroidism, Secondary Mental Disorders Schizophrenia Schizophrenia Tobacco Use Disorder](#)