



# SZABO SCANDIC

Part of Europa Biosite

## Produktinformation



Forschungsprodukte & Biochemikalien



Zellkultur & Verbrauchsmaterial



Diagnostik & molekulare Diagnostik



Laborgeräte & Service

Weitere Information auf den folgenden Seiten!  
See the following pages for more information!



### Lieferung & Zahlungsart

siehe unsere [Liefer- und Versandbedingungen](#)

### Zuschläge

- Mindermengenzuschlag
- Trockeneiszuschlag
- Gefahrgutzuschlag
- Expressversand

### SZABO-SCANDIC HandelsgmbH

Quellenstraße 110, A-1100 Wien

T. +43(0)1 489 3961-0

F. +43(0)1 489 3961-7

[mail@szabo-scandic.com](mailto:mail@szabo-scandic.com)

[www.szabo-scandic.com](http://www.szabo-scandic.com)

[linkedin.com/company/szaboscandic](https://www.linkedin.com/company/szaboscandic) 

## SLC12A1 monoclonal antibody (M03), clone 4H4

Catalog # : H00006557-M03

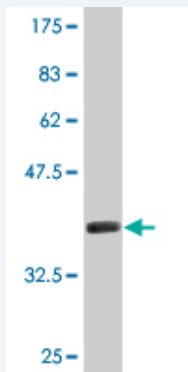
規格 : [ 100 ug ]

List All

### Specification

<b>Product Description:</b>	Mouse monoclonal antibody raised against a partial recombinant SLC12A1.
<b>Immunogen:</b>	SLC12A1 (NP_000329.1, 80 a.a. ~ 172 a.a) partial recombinant protein with GST tag. MW of the GST tag alone is 26 KDa.
<b>Sequence:</b>	AKTDASFHAYDSHTNTYYLQTFGHNTMDAVPKIEYYRNTGSISGPKVNRP SLLEIHEQLAKNVAVTPSSADRVANGDGIPGDEQAENKEDDQA
<b>Host:</b>	Mouse
<b>Reactivity:</b>	Human
<b>Isotype:</b>	IgG2a Kappa

**Quality Control Testing:** Antibody Reactive Against Recombinant Protein.



Western Blot detection against Immunogen (35.97 KDa) .

**Storage Buffer:** In 1x PBS, pH 7.4

**Storage Instruction:** Store at -20°C or lower. Aliquot to avoid repeated freezing and thawing.

**MSDS:** [Download](#)

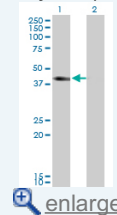
**Datasheet:** [Download](#)

### Applications

Western Blot (Transfected lysate)

### Application Image

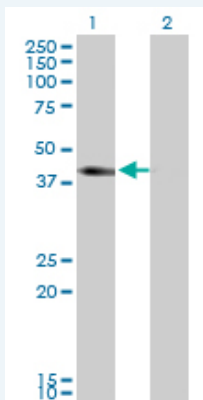
Western Blot (Transfected lysate)



[enlarge](#)


Western Blot (Recombinant protein)

ELISA




Western Blot analysis of SLC12A1 expression in transfected 293T cell line by SLC12A1 monoclonal antibody (M03), clone 4H4.

Lane 1: SLC12A1 transfected lysate(46.5 KDa).  
Lane 2: Non-transfected lysate.

 [Protocol Download](#)

### Western Blot (Recombinant protein)

 [Protocol Download](#)

### ELISA

### Gene Information

Entrez GeneID: [6557](#)

GeneBank [NM\\_000338](#)  
Accession#:

Protein [NP\\_000329.1](#)  
Accession#:

Gene Name: SLC12A1

Gene Alias: BSC1,MGC48843,NKCC2

Gene Description: solute carrier family 12 (sodium/potassium/chloride transporters), member 1

Omim ID: [600839](#), [601678](#)

Gene Ontology: [Hyperlink](#)

**Gene Summary:** The sodium-potassium-chloride cotransporter isoform 2 is kidney-specific and is found on the apical membrane of the thick ascending limb of Henle's loop and the macula densa. It accounts for most of the NaCl resorption with the stoichiometry of 1Na:1K:2Cl and is sensitive to such diuretics as furosemide and bumetanide. Some Bartter-like syndromes result from defects in this gene. [provided by RefSeq]

**Other Designations:** NKCC2A variant A,Na-K-2Cl cotransporter,sodium potassium chloride cotransporter 2

### Related Disease

[Cardiovascular Diseases](#) [Diabetes Mellitus, Type 2](#) [Edema](#)  
[Genetic Predisposition to Disease](#) [Hyperparathyroidism, Secondary](#) [Hypertension](#)

