



SZABO SCANDIC

Part of Europa Biosite

Produktinformation



Forschungsprodukte & Biochemikalien



Zellkultur & Verbrauchsmaterial



Diagnostik & molekulare Diagnostik



Laborgeräte & Service

Weitere Information auf den folgenden Seiten!
See the following pages for more information!



Lieferung & Zahlungsart

siehe unsere [Liefer- und Versandbedingungen](#)

Zuschläge

- Mindermengenzuschlag
- Trockeneiszuschlag
- Gefahrgutzuschlag
- Expressversand

SZABO-SCANDIC HandelsgmbH

Quellenstraße 110, A-1100 Wien

T. +43(0)1 489 3961-0

F. +43(0)1 489 3961-7

mail@szabo-scandic.com

www.szabo-scandic.com

[linkedin.com/company/szaboscandic](https://www.linkedin.com/company/szaboscandic) 

SLC12A4 monoclonal antibody (M01), clone 1H6

Catalog # : H00006560-M01

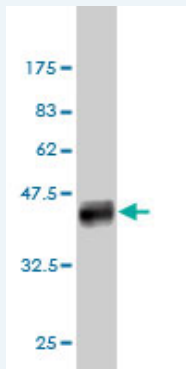
規格 : [100 ug]

[List All](#)

Specification

Product Description:	Mouse monoclonal antibody raised against a partial recombinant SLC12A4.
Immunogen:	SLC12A4 (AAH21193, 1 a.a. ~ 110 a.a) partial recombinant protein with GST tag. MW of the GST tag alone is 26 KDa.
Sequence:	MPHFTVVPVDGPRRGDYDNLEGLSWVDYGERAELDDSDGHGNHRESS PFLSPLEASRGIDYDRNLALFEEELDIRPKVSLLGKLVSYTNLTQGAK HEEAESGEGTRR
Host:	Mouse
Reactivity:	Human
Isotype:	IgG1 kappa

Quality Control Testing: Antibody Reactive Against Recombinant Protein.



Western Blot detection against Immunogen (38.1 KDa) .

Storage Buffer: In 1x PBS, pH 7.4

Storage Instruction: Store at -20°C or lower. Aliquot to avoid repeated freezing and thawing.

MSDS: [Download](#)

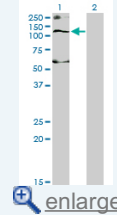
Datasheet: [Download](#)

Applications

Western Blot (Transfected lysate)

Application Image

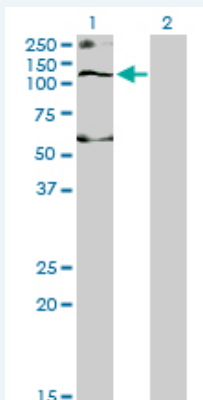
Western Blot (Transfected lysate)



[enlarge](#)

Western Blot (Recombinant protein)

ELISA




Western Blot analysis of SLC12A4 expression in transfected 293T cell line by SLC12A4 monoclonal antibody (M01), clone 1H6.

Lane 1: SLC12A4 transfected lysate(120.6 kDa).
Lane 2: Non-transfected lysate.

 [Protocol Download](#)

Western Blot (Recombinant protein)

 [Protocol Download](#)

ELISA

Gene Information

Entrez GeneID: [6560](#)

GeneBank [BC021193](#)
Accession#:

Protein [AAH21193](#)
Accession#:

Gene Name: SLC12A4

Gene Alias: FLJ40489,KCC1

Gene Description: solute carrier family 12 (potassium/chloride transporters), member 4

Omim ID: [604119](#)

Gene Ontology: [Hyperlink](#)

Other Designations: potassium transport protein,potassium/chloride cotransporter 1

Related Disease

[Cardiovascular Diseases](#) [Diabetes Mellitus, Type 2](#) [Edema](#) [Hypercholesterolemia](#)