



SZABO SCANDIC

Part of Europa Biosite

Produktinformation



Forschungsprodukte & Biochemikalien



Zellkultur & Verbrauchsmaterial



Diagnostik & molekulare Diagnostik



Laborgeräte & Service

Weitere Information auf den folgenden Seiten!
See the following pages for more information!



Lieferung & Zahlungsart

siehe unsere [Liefer- und Versandbedingungen](#)

Zuschläge

- Mindermengenzuschlag
- Trockeneiszuschlag
- Gefahrgutzuschlag
- Expressversand

SZABO-SCANDIC HandelsgmbH

Quellenstraße 110, A-1100 Wien

T. +43(0)1 489 3961-0

F. +43(0)1 489 3961-7

mail@szabo-scandic.com

www.szabo-scandic.com

[linkedin.com/company/szaboscandic](https://www.linkedin.com/company/szaboscandic) 

SLC15A1 monoclonal antibody (M01), clone 1F8

Catalog # : H00006564-M01

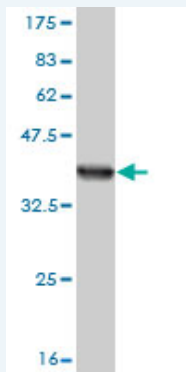
規格 : [100 ug]

[List All](#)

Specification

Product Description:	Mouse monoclonal antibody raised against a partial recombinant SLC15A1.
Immunogen:	SLC15A1 (NP_005064, 473 a.a. ~ 572 a.a) partial recombinant protein with GST tag. MW of the GST tag alone is 26 KDa.
Sequence:	VKDGLNQQKPEKGENGIRFVNTFNELITITMSGKVYANISSYNASTYQFFPS GIKGFTISSTEIPPQCQPNFNLFYLEFGSAYTYIVQRKNDSCPEVKVFE
Host:	Mouse
Reactivity:	Human
Isotype:	IgG2b Kappa

Quality Control Testing: Antibody Reactive Against Recombinant Protein.



Western Blot detection against Immunogen (36.74 KDa) .

Storage Buffer: In 1x PBS, pH 7.4

Storage Instruction: Store at -20°C or lower. Aliquot to avoid repeated freezing and thawing.

MSDS: [Download](#)

Datasheet: [Download](#)

Applications

Western Blot (Recombinant protein)

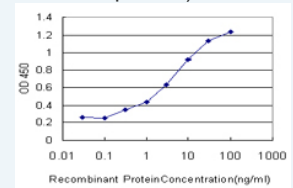
[Protocol Download](#)

Sandwich ELISA (Recombinant protein)

Application Image

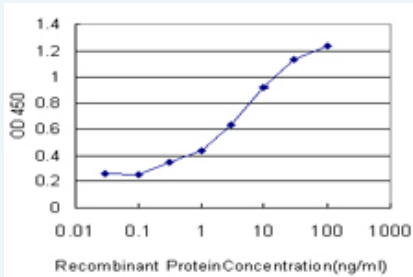
Western Blot (Recombinant protein)

Sandwich ELISA (Recombinant protein)



[enlarge](#)

ELISA



Detection limit for recombinant GST tagged SLC15A1 is approximately 0.1ng/ml as a capture antibody.

 [Protocol Download](#)

ELISA

Gene Information

Entrez GeneID: [6564](#)

GeneBank [NM_005073](#)

Accession#:

Protein [NP_005064](#)

Accession#:

Gene Name: SLC15A1

Gene Alias: HPECT1,HPEPT1,PEPT1

Gene Description: solute carrier family 15 (oligopeptide transporter), member 1

Omim ID: [600544](#)

Gene Ontology: [Hyperlink](#)

Other Designations: OTTHUMP00000018599,bA551M18.1.1 (solute carrier family 15 (oligopeptide transporter) member 1),peptide transporter HPEPT1

Related Disease

[Colitis](#), [Ulcerative Crohn Disease](#), [Crohn's disease](#), [Genetic Predisposition to Disease](#), [Hyperparathyroidism](#), [Secondary Kidney Failure](#), [Chronic Tobacco Use Disorder](#)

[服務條款](#) | [隱私權政策](#) | [著作及商標](#) | [網站地圖](#)

©2016 亞諾法生技股份有限公司 Abnova Corporation. 版權所有.