



# SZABO SCANDIC

Part of Europa Biosite

## Produktinformation



Forschungsprodukte & Biochemikalien



Zellkultur & Verbrauchsmaterial



Diagnostik & molekulare Diagnostik



Laborgeräte & Service

Weitere Information auf den folgenden Seiten!  
See the following pages for more information!



### Lieferung & Zahlungsart

siehe unsere [Liefer- und Versandbedingungen](#)

### Zuschläge

- Mindermengenzuschlag
- Trockeneiszuschlag
- Gefahrgutzuschlag
- Expressversand

### SZABO-SCANDIC HandelsgmbH

Quellenstraße 110, A-1100 Wien

T. +43(0)1 489 3961-0

F. +43(0)1 489 3961-7

[mail@szabo-scandic.com](mailto:mail@szabo-scandic.com)

[www.szabo-scandic.com](http://www.szabo-scandic.com)

[linkedin.com/company/szaboscandic](https://www.linkedin.com/company/szaboscandic) 

# SLC16A1 purified MaxPab mouse polyclonal antibody (B01P) MaxPab®

Catalog # : H00006566-B01P

規格 : [ 50 ug ]

[List All](#)

## Specification

**Product Description:** Mouse polyclonal antibody raised against a full-length human SLC16A1 protein.

**Immunogen:** SLC16A1 (P53985, 1 a.a. ~ 500 a.a) full-length human protein.

**Sequence:**  
 MPPAVGGPVGYTTPDGGWGWAVVIGAFISIGFSYAFPKSITVFFKEIEGIF  
 HATTSEVSWISSIMLAVMYGGGPISILVNKYGSRIVMIVGGCLSGCGLIAA  
 SFCNTVQQLYVCIGVIGGLGLAFNLPALTMIGKYFYKRRPLANGLAMAG  
 SPVFLCTLAPLNQVFFGIFGWRGSFLILGGLLLNCCVAGALMRPIGPKPT  
 KAGKDKSKASLEKAGKSGVKDLHDANTDLIGRHPKQEKRSVFQTINQFL  
 DLTFTHRGFLLYLSGNVIMFFGLFAPLVFLSSYGKSSQHYSESSEKSAFLLSI  
 LAFVDMVARPSMGLVANTKPIRPRIQYFFAASVWANGVCHMLAPLSTTYV  
 GFCVYAGFFGFAFGWLSVLFETLMDLVGPQRFSSAVGLVTIVECCPVL  
 LGPPLLGRNLNDMYGDYKYTYWACGVVLIISGIYLFIMGINYRLLAKEQKA  
 NEQKESKEEETSIDVAGKPNEVTKAAESPDQKDEGGPKEEESPV

**Host:** Mouse

**Reactivity:** Human

**Quality Control Testing:** Antibody reactive against mammalian transfected lysate.

**Storage Buffer:** In 1x PBS, pH 7.4

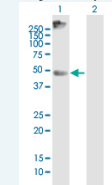
**Storage Instruction:** Store at -20°C or lower. Aliquot to avoid repeated freezing and thawing.

**MSDS:** [Download](#)

**Datasheet:** [Download](#)

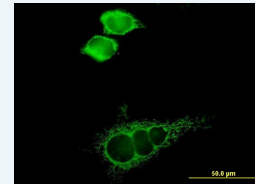
## Application Image

Western Blot (Transfected lysate)



[enlarge](#)

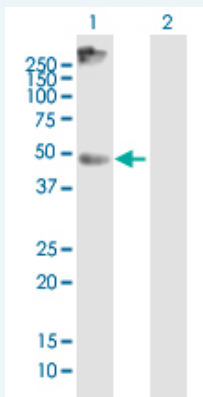
Immunofluorescence



[enlarge](#)

## Applications

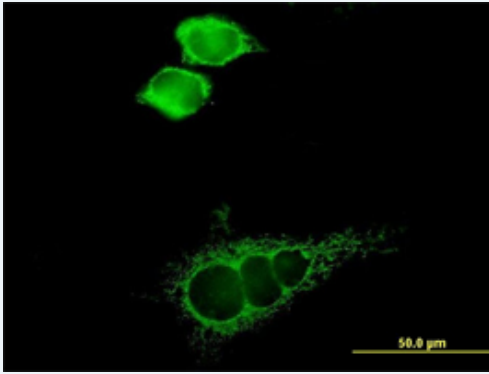
### Western Blot (Transfected lysate)



Western Blot analysis of SLC16A1 expression in transfected 293T cell line (H00006566-T02) by SLC16A1 MaxPab polyclonal antibody.

Lane 1: SLC16A1 transfected lysate(55 KDa).  
 Lane 2: Non-transfected lysate.

## Immunofluorescence



 enlarge this image

Immunofluorescence of purified MaxPab antibody to SLC16A1 on HeLa cell. [antibody concentration 10 ug/ml]

## Gene Information

**Entrez GeneID:** [6566](#)

**GeneBank Accession#:** [NM\\_003051.2](#)

**Protein Accession#:** [P53985](#)

**Gene Name:** SLC16A1

**Gene Alias:** FLJ36745,HHF7,MCT,MCT1,MGC44475

**Gene Description:** solute carrier family 16, member 1 (monocarboxylic acid transporter 1)

**Omim ID:** [245340](#), [600682](#)

**Gene Ontology:** [Hyperlink](#)

**Gene Summary:** The SLC16A1 gene encodes a monocarboxylate transporter (MCT1) that mediates the movement of lactate and pyruvate across cell membranes Import and export of these substrates by tissues such as erythrocytes, muscle, intestine, and kidney are ascribed largely to the action of a proton-coupled MCT (Garcia et al., 1994 [PubMed 8124722]).[supplied by OMIM

**Other Designations:** OTTHUMP00000013960,monocarboxylate transporter 1,solute carrier family 16 (monocarboxylic acid transporters), member 1,solute carrier family 16, member 1

## Related Disease

[Cardiovascular Diseases](#) [Diabetes Mellitus, Type 2](#) [Edema](#) [Hearing Loss](#)  
[Kidney Failure, Chronic](#)