



SZABO SCANDIC

Part of Europa Biosite

Produktinformation



Forschungsprodukte & Biochemikalien



Zellkultur & Verbrauchsmaterial



Diagnostik & molekulare Diagnostik



Laborgeräte & Service

Weitere Information auf den folgenden Seiten!
See the following pages for more information!



Lieferung & Zahlungsart

siehe unsere [Liefer- und Versandbedingungen](#)

Zuschläge

- Mindermengenzuschlag
- Trockeneiszuschlag
- Gefahrgutzuschlag
- Expressversand

SZABO-SCANDIC HandelsgmbH

Quellenstraße 110, A-1100 Wien

T. +43(0)1 489 3961-0

F. +43(0)1 489 3961-7

mail@szabo-scandic.com

www.szabo-scandic.com

[linkedin.com/company/szaboscandic](https://www.linkedin.com/company/szaboscandic)

SLC16A1 purified MaxPab rabbit polyclonal antibody (D01P) MaxPab®

Catalog # : H00006566-D01P

規格 : [100 ug]

[List All](#)

Specification

Product Description: Rabbit polyclonal antibody raised against a full-length human SLC16A1 protein.

Immunogen: SLC16A1 (P53985, 1 a.a. ~ 500 a.a) full-length human protein.

Sequence:
 MPPAVGGPVGYPDGGGWAVVIGAFISIGFSYAFPKSITVFFKEIEGIF
 HATTSEVSWISSIMLAVMYGGGPISILVNKYGSRVMIVGGCLSGCGLIAA
 SFCNTVQQLYVCIGVIGGLGLAFNLPALTMIGKYFYKRRPLANGLAMAG
 SPVFLCTLAPLNQVFFGIFGWRGSFLILGGLLLNCCVAGALMRPIGPKPT
 KAGKDKSKASLEKAGKSGVKKDLHDANTDLIGRHPKQEKRSVFTINQFL
 DLTLFTHRGLLYL SGNVIMFFGLFAPLVFLSSYGKSQHYSSSEKSAFLLSI
 LAFVDMVARPSMGLVANTKPIRPRIQYFFAASVWANGVCHMLAPLSTTYV
 GFCVYAGFFGFAFGWLSVLFETLMDLVGPQRFSSAVGLVTIVECCPVL
 LGPPLLGRLNDMYGDYKYTYWACGVVLIISGIYLFIMGINYRLLAKEQKA
 NEQKESKEEETSIDVAGKPNEVTKAAESPDQKDTTEGGPKEEESPV

Host: Rabbit

Reactivity: Human

Quality Control Testing: Antibody reactive against mammalian transfected lysate.

Storage Buffer: In 1x PBS, pH 7.4

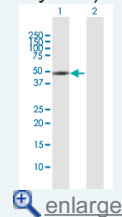
Storage Instruction: Store at -20°C or lower. Aliquot to avoid repeated freezing and thawing.

MSDS: [Download](#)

Datasheet: [Download](#)

Application Image

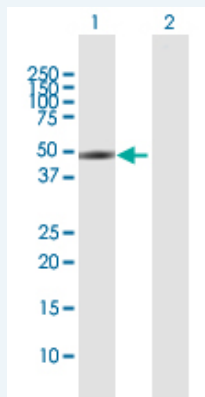
Western Blot (Transfected lysate)



[enlarge](#)

Applications

Western Blot (Transfected lysate)



Western Blot analysis of SLC16A1 expression in transfected 293T cell line (H00006566-T01) by SLC16A1 MaxPab polyclonal antibody.

Lane 1: SLC16A1 transfected lysate(54.00 KDa).
 Lane 2: Non-transfected lysate.

Gene Information

Entrez GeneID: [6566](#)

**GeneBank
Accession#:** [NM_003051.2](#)

**Protein
Accession#:** [P53985](#)

Gene Name: SLC16A1

Gene Alias: FLJ36745,HHF7,MCT,MCT1,MGC44475

**Gene
Description:** solute carrier family 16, member 1 (monocarboxylic acid transporter 1)

Omim ID: [245340](#), [600682](#)

Gene Ontology: [Hyperlink](#)

Gene Summary: The SLC16A1 gene encodes a monocarboxylate transporter (MCT1) that mediates the movement of lactate and pyruvate across cell membranes. Import and export of these substrates by tissues such as erythrocytes, muscle, intestine, and kidney are ascribed largely to the action of a proton-coupled MCT (Garcia et al., 1994 [PubMed 8124722]).[supplied by OMIM]

**Other
Designations:** OTTHUMP00000013960,monocarboxylate transporter 1,solute carrier family 16 (monocarboxylic acid transporters), member 1,solute carrier family 16, member 1

Related Disease

[Cardiovascular Diseases](#) [Diabetes Mellitus, Type 2](#) [Edema](#) [Hearing Loss](#)
[Kidney Failure, Chronic](#)