



SZABO SCANDIC

Part of Europa Biosite

Produktinformation



Forschungsprodukte & Biochemikalien



Zellkultur & Verbrauchsmaterial



Diagnostik & molekulare Diagnostik



Laborgeräte & Service

Weitere Information auf den folgenden Seiten!
See the following pages for more information!



Lieferung & Zahlungsart

siehe unsere [Liefer- und Versandbedingungen](#)

Zuschläge

- Mindermengenzuschlag
- Trockeneiszuschlag
- Gefahrgutzuschlag
- Expressversand

SZABO-SCANDIC HandelsgmbH

Quellenstraße 110, A-1100 Wien

T. +43(0)1 489 3961-0

F. +43(0)1 489 3961-7

mail@szabo-scandic.com

www.szabo-scandic.com

[linkedin.com/company/szaboscandic](https://www.linkedin.com/company/szaboscandic) 

SLC16A1 293T Cell Transient Overexpression Lysate(Denatured)

Catalog # : H00006566-T01

規格 : [100 uL]

[List All](#)

Specification

Transfected Cell Line: 293T

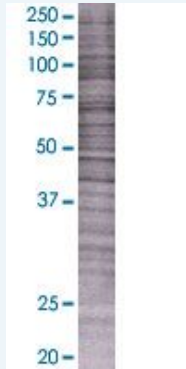
Plasmid: pCMV-SLC16A1 full-length

Host: Human

Theoretical MW (kDa): 55.11

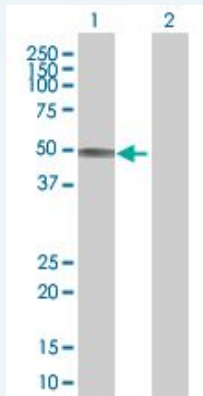
Quality Control Testing: Transient overexpression cell lysate was tested with Anti-SLC16A1 antibody ([H00006566-B01](#)) by Western Blots.

SDS-PAGE Gel



SLC16A1 transfected lysate.

Western Blot



Lane 1: SLC16A1 transfected lysate (55.11 KDa)

Lane 2: Non-transfected lysate.

Storage Buffer: 1X Sample Buffer (50 mM Tris-HCl, 2% SDS, 10% glycerol, 300 mM 2-mercaptoethanol, 0.01% Bromophenol blue)

Storage Instruction: Store at -80°C. Aliquot to avoid repeated freezing and thawing.

MSDS:  [Download](#)

Applications

Western Blot

Gene Information

Entrez GeneID: [6566](#)

**GeneBank
Accession#:** [NM_003051.2](#)

**Protein
Accession#:** [P53985](#)

Gene Name: SLC16A1

Gene Alias: FLJ36745,HHF7,MCT,MCT1,MGC44475

**Gene
Description:** solute carrier family 16, member 1 (monocarboxylic acid transporter 1)

Omim ID: [245340](#), [600682](#)

Gene Ontology: [Hyperlink](#)

Gene Summary: The SLC16A1 gene encodes a monocarboxylate transporter (MCT1) that mediates the movement of lactate and pyruvate across cell membranes. Import and export of these substrates by tissues such as erythrocytes, muscle, intestine, and kidney are ascribed largely to the action of a proton-coupled MCT (Garcia et al., 1994 [PubMed 8124722]).[supplied by OMIM]

**Other
Designations:** OTTHUMP00000013960,monocarboxylate transporter 1,solute carrier family 16 (monocarboxylic acid transporters), member 1,solute carrier family 16, member 1

Related Disease

[Cardiovascular Diseases](#) [Diabetes Mellitus, Type 2](#) [Edema](#) [Hearing Loss](#)
[Kidney Failure, Chronic](#)

[服務條款](#) | [隱私權政策](#) | [著作及商標](#) | [網站地圖](#)

©2016 亞諾法生技股份有限公司 Abnova Corporation. 版權所有.