



SZABO SCANDIC

Part of Europa Biosite

Produktinformation



Forschungsprodukte & Biochemikalien



Zellkultur & Verbrauchsmaterial



Diagnostik & molekulare Diagnostik



Laborgeräte & Service

Weitere Information auf den folgenden Seiten!
See the following pages for more information!



Lieferung & Zahlungsart

siehe unsere [Liefer- und Versandbedingungen](#)

Zuschläge

- Mindermengenzuschlag
- Trockeneiszuschlag
- Gefahrgutzuschlag
- Expressversand

SZABO-SCANDIC HandelsgmbH

Quellenstraße 110, A-1100 Wien

T. +43(0)1 489 3961-0

F. +43(0)1 489 3961-7

mail@szabo-scandic.com

www.szabo-scandic.com

[linkedin.com/company/szaboscandic](https://www.linkedin.com/company/szaboscandic) 

SLC18A1 monoclonal antibody (M01), clone 3A2-E10

Catalog # : H00006570-M01

規格 : [100 ug]

[List All](#)

Specification

Product Description: Mouse monoclonal antibody raised against a full length recombinant SLC18A1.

Immunogen: SLC18A1 (AAH06317.1, 1 a.a. ~ 493 a.a) full-length recombinant protein with GST tag. MW of the GST tag alone is 26 KDa.

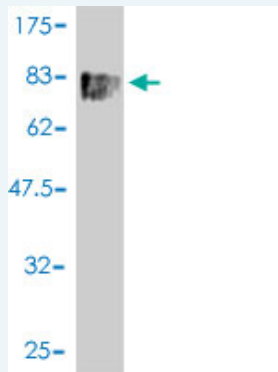
Sequence:
MLRPILDAPQRLLKEGRASRQLVLVWFVALLLDNMLFTVVVPIVPTFLYD
MEFKEVNSSLHLGHAGSSPHALASPAFSTIFSFNNNTVAVEESVPSGIA
WMNDTASTIPPPATEAISAHKNNCLQGTGFLEEETTRVGVLFASKAVMQ
LLVNPFGVPLTNRIGYHIPMFAFVIMFLSTVMFAFSGTYTLLFVARTLQG
IGSSFSSVAGLGMLASVYTDHERGRAMGTALGGLALGLLVGAPFGSV
MYEFVGSAPFLILAFLLDGLALQILQPSKVSPESAKGTPLFMLLKDP
YILVAAGLAFLPASVSYLIGTNLFGVLANKMGRWLCSLIGMLVGTSLLCV
PLAHNIFGLIGPNAGLGLAIGMVDSSMMPIMGHLVDLRHTSVYGSVYAIAD
VAFCMGFAIGPSTGGAINKAIGFPWLMVITGVINIVYAPLCYYLRSPPAKEE
KLAILSQDCPMETRMATQKPTKEFPLGEDSDEEEDHEE

Host: Mouse

Reactivity: Human

Isotype: IgG2b kappa

Quality Control Testing: Antibody Reactive Against Recombinant Protein.



Western Blot detection against Immunogen (79.97 KDa) .

Storage Buffer: In 1x PBS, pH 7.4

Storage Instruction: Store at -20°C or lower. Aliquot to avoid repeated freezing and thawing.

MSDS: [Download](#)

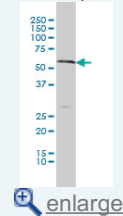
Datasheet: [Download](#)

Applications

Western Blot (Cell lysate)

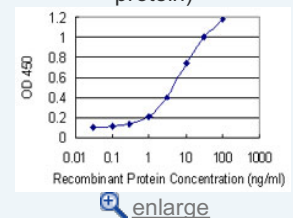
Application Image

Western Blot (Cell lysate)

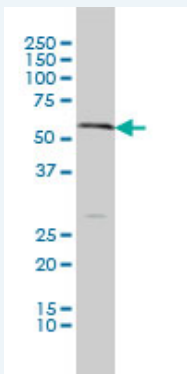


Western Blot (Recombinant protein)

Sandwich ELISA (Recombinant protein)



ELISA



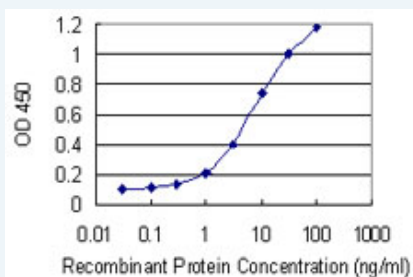
SLC18A1 monoclonal antibody (M01), clone 3A2-E10 Western Blot analysis of SLC18A1 expression in A-549 (Cat # L025V1).

[Protocol Download](#)

Western Blot (Recombinant protein)

[Protocol Download](#)

Sandwich ELISA (Recombinant protein)



Detection limit for recombinant GST tagged SLC18A1 is 0.1 ng/ml as a capture antibody.

[Protocol Download](#)

ELISA

Gene Information

Entrez GeneID: [6570](#)

GeneBank [BC006317](#)

Accession#:

Protein [AAH06317.1](#)

Accession#:

Gene Name: SLC18A1

Gene Alias: CGAT,VAT1,VMAT1

Gene Description: solute carrier family 18 (vesicular monoamine), member 1

Omim ID: [193002](#)

Gene Ontology: [Hyperlink](#)

Gene Summary: The vesicular monoamine transporter acts to accumulate cytosolic monoamines into vesicles, using the proton gradient maintained across the vesicular membrane. Its proper function is essential to the correct activity of the monoaminergic systems that have been implicated in several human neuropsychiatric disorders. The transporter is a site of action of important drugs, including reserpine and tetrabenazine (Peter et al., 1993 [PubMed 7905859]). See also SLC18A2 (MIM 193001). [supplied by OMIM]

Other -

Designations:

Gene Pathway

[Parkinson's disease](#)

Related Disease

[Anorexia Nervosa](#) [Anxiety Disorders](#) [Bipolar Disorder](#) [Bulimia](#) [Cognition](#)
[Genetic Predisposition to Disease](#) [Narcolepsy](#) [Personality Inventory](#) [Reward](#) [Schizophrenia](#)
[Schizophrenia](#) [Schizophrenic Psychology](#) [Weight Gain](#)

[服務條款](#) | [隱私權政策](#) | [著作及商標](#) | [網站地圖](#)

©2016 亞諾法生技股份有限公司 Abnova Corporation. 版權所有.