



# SZABO SCANDIC

Part of Europa Biosite

## Produktinformation



Forschungsprodukte & Biochemikalien



Zellkultur & Verbrauchsmaterial



Diagnostik & molekulare Diagnostik



Laborgeräte & Service

Weitere Information auf den folgenden Seiten!  
See the following pages for more information!



### Lieferung & Zahlungsart

siehe unsere [Liefer- und Versandbedingungen](#)

### Zuschläge

- Mindermengenzuschlag
- Trockeneiszuschlag
- Gefahrgutzuschlag
- Expressversand

### SZABO-SCANDIC HandelsgmbH

Quellenstraße 110, A-1100 Wien

T. +43(0)1 489 3961-0

F. +43(0)1 489 3961-7

[mail@szabo-scandic.com](mailto:mail@szabo-scandic.com)

[www.szabo-scandic.com](http://www.szabo-scandic.com)

[linkedin.com/company/szaboscandic](https://www.linkedin.com/company/szaboscandic) 

## SLC18A2 polyclonal antibody (A01)

Catalog # : H00006571-A01

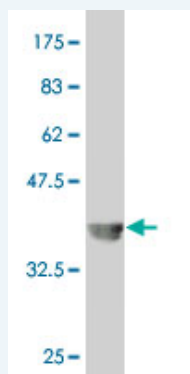
規格 : [ 50 uL ]

List All

### Specification

<b>Product Description:</b>	Mouse polyclonal antibody raised against a partial recombinant SLC18A2.
<b>Immunogen:</b>	SLC18A2 (NP_003045, 53 a.a. ~ 151 a.a) partial recombinant protein with GST tag.
<b>Sequence:</b>	HEKNATEIQTARPVHTASISDSFQSIFSYDNTMVTGNATRDLLHQTATQHMTNASAVPSPDCPSEDKDLLNENVQVGLLFASKATVQLITNPFIGL
<b>Host:</b>	Mouse
<b>Reactivity:</b>	Human

**Quality Control Testing:** Antibody Reactive Against Recombinant Protein.



Western Blot detection against Immunogen (37 KDa) .

**Storage Buffer:** 50 % glycerol

**Storage Instruction:** Store at -20°C or lower. Aliquot to avoid repeated freezing and thawing.

**MSDS:** [Download](#)

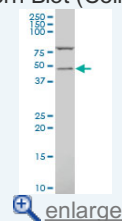
**Datasheet:** [Download](#)

### Applications

Western Blot (Cell lysate)

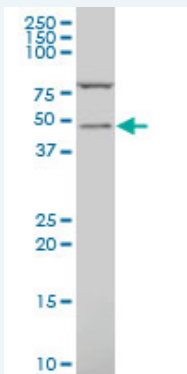
### Application Image

Western Blot (Cell lysate)



Western Blot (Recombinant protein)

ELISA



SLC18A2 polyclonal antibody (A01), Lot # 060717JCS1 Western Blot analysis of SLC18A2 expression in Jurkat ( Cat # L017V1 ).

 [Protocol Download](#)

---

#### Western Blot (Recombinant protein)

 [Protocol Download](#)

---

#### ELISA

---

#### Gene Information

**Entrez GeneID:** [6571](#)

**GeneBank** [NM\\_003054](#)

**Accession#:**

**Protein** [NP\\_003045](#)

**Accession#:**

**Gene Name:** SLC18A2

**Gene Alias:** MGC120477,MGC120478,MGC26538,SVAT,SVMT,VAT2,VMAT2

**Gene** solute carrier family 18 (vesicular monoamine), member 2

**Description:**

**Omim ID:** [193001](#)

**Gene Ontology:** [Hyperlink](#)

**Gene Summary:** The vesicular monoamine transporter acts to accumulate cytosolic monoamines into synaptic vesicles, using the proton gradient maintained across the synaptic vesicular membrane. Its proper function is essential to the correct activity of the monoaminergic systems that have been implicated in several human neuropsychiatric disorders. The transporter is a site of action of important drugs, including reserpine and tetrabenazine (Peter et al., 1993 [PubMed 7905859]). See also SLC18A1 (MIM 193002).[supplied by OMIM]

**Other** OTTHUMP00000020576,vesicle monoamine transporter type 2

**Designations:**

---

#### Gene Pathway

[Parkinson's disease](#)

---

#### Related Disease

[Alcoholism](#) [Anorexia Nervosa](#) [Bipolar Disorder](#) [Bulimia](#) [Cognition](#) [Depressive Disorder](#) [Disease Models, Animal](#) [Genetic Predisposition to Disease](#) [Narcolepsy](#) [Parkinson Disease](#) [Parkinson disease](#) [Psychiatric Status Rating Scales](#) [Schizophrenia](#) [Schizophrenia](#) [Schizophrenic Psychology](#) [Tobacco Use Disorder](#) [Weight Gain](#)

