



SZABO SCANDIC

Part of Europa Biosite

Produktinformation



Forschungsprodukte & Biochemikalien



Zellkultur & Verbrauchsmaterial



Diagnostik & molekulare Diagnostik



Laborgeräte & Service

Weitere Information auf den folgenden Seiten!
See the following pages for more information!



Lieferung & Zahlungsart

siehe unsere [Liefer- und Versandbedingungen](#)

Zuschläge

- Mindermengenzuschlag
- Trockeneiszuschlag
- Gefahrgutzuschlag
- Expressversand

SZABO-SCANDIC HandelsgmbH

Quellenstraße 110, A-1100 Wien

T. +43(0)1 489 3961-0

F. +43(0)1 489 3961-7

mail@szabo-scandic.com

www.szabo-scandic.com

[linkedin.com/company/szaboscandic](https://www.linkedin.com/company/szaboscandic) 

SLC20A1 purified MaxPab mouse polyclonal antibody (B01P) MaxPab®

Catalog # : H00006574-B01P

規格 : [50 ug]

[List All](#)

Specification

Product Description: Mouse polyclonal antibody raised against a full-length human SLC20A1 protein.

Immunogen: SLC20A1 (NP_005406.3, 1 a.a. ~ 679 a.a) full-length human protein.

Sequence:
 MATLITSTTAATAASGPLVDYLWMLILGFIIAFVLAFSVGANDVANSFGTA
 VGSGVTLKQACILASIFETVGSVLLGAKVSETIRKGLIDVEMYNSTQGLL
 MAGSVSAMFGSAVWQLVASFLKLPISGTHCIVGATIGFSLVAKGQEGVK
 WSELIKIVMSWFVSPLLSGIMSGILFFLVRAFILHKADPVPNGLRALPVFYA
 CTVGINLFSIMYTGAPLLGFDKLPWGTILISVGCAVFCALMWFFVCPRM
 KRKIEREIKCSPSESPLMEKKNLKDHEETKLSVGDIENTKHPVSEVGPAT
 VPLQAVVEERTVSFKLGDLEEAPERERLPSVDLKEETSIDSTVNGAVQLP
 NGNLVQFSQAVSNQINSSGHYQYHTVHKDSGLYKELLHKLHLAKVGDCM
 GDSGDKPLRRNNSYTSYMAICGMPLDSFRAKEGEQKGEEMEKLTPWN
 ADSKKRIRMSYTSYCAVSDLHSAEIDMSVKAEMGLGDRKGSNGSLE
 EWYDQDKPEVSLLFQFLQILTACFGSFAHGGNDVSNAGPLVALYLYYDT
 GDVSSKVATPIWLLLYGGVGCVGLWWGRRVIQTMGKDLTPITPSSGF
 SIELASALTVIASNIGLPISTTHCKVGSVSVGWLRSKKAVDWRLFRNIFM
 AWFVTVPISGVISAAIMAIFRYVILRM

Host: Mouse

Reactivity: Human

Quality Control Testing: Antibody reactive against mammalian transfected lysate.

Storage Buffer: In 1x PBS, pH 7.4

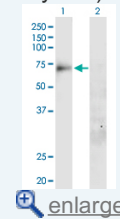
Storage Instruction: Store at -20°C or lower. Aliquot to avoid repeated freezing and thawing.

MSDS:  [Download](#)

Datasheet:  [Download](#)

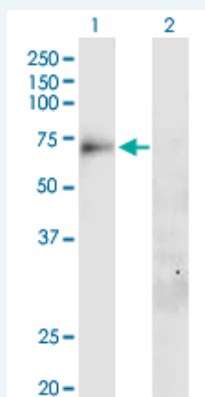
Application Image

Western Blot (Transfected lysate)



Applications

Western Blot (Transfected lysate)



Western Blot analysis of SLC20A1 expression in transfected 293T cell line (H00006574-

T01) by SLC20A1 MaxPab polyclonal antibody.

Lane 1: SLC20A1 transfected lysate(73.70 KDa).

Lane 2: Non-transfected lysate.

 [Protocol Download](#)

Gene Information

Entrez GeneID: [6574](#)

GeneBank [NM_005415](#)

Accession#:

Protein [NP_005406.3](#)

Accession#:

Gene Name: SLC20A1

Gene Alias: DKFZp686J2397,FLJ41426,GLVR1,Givr-1,PIT1,PiT-1

Gene Description: solute carrier family 20 (phosphate transporter), member 1

Omim ID: [137570](#)

Gene Ontology: [Hyperlink](#)

Gene Summary: Retrovirus receptors allow infection of human and murine cells by various retroviruses. The receptors that have been identified at the molecular level include CD4 (MIM 186940) for human immunodeficiency virus, Rec1 for murine ecotropic virus, and GLVR1 for gibbon ape leukemia virus (see MIM 182090). These 3 proteins show no homology to one another at the DNA or protein level. GLVR1 is a sodium-dependent phosphate symporter.[supplied by OMIM]

Other Designations: gibbon ape leukemia virus receptor 1

Related Disease

[Breast cancer](#) [Breast Neoplasms](#) [Cardiovascular Diseases](#) [Diabetes Mellitus, Type 2](#)
[Edema](#) [Genetic Predisposition to Disease](#) [Hypertension](#) [Hypertrophy, Left Ventricular](#)
[Ovarian cancer](#)

[服務條款](#) | [隱私權政策](#) | [著作及商標](#) | [網站地圖](#)

©2016 亞諾法生技股份有限公司 Abnova Corporation. 版權所有.