



SZABO SCANDIC

Part of Europa Biosite

Produktinformation



Forschungsprodukte & Biochemikalien



Zellkultur & Verbrauchsmaterial



Diagnostik & molekulare Diagnostik



Laborgeräte & Service

Weitere Information auf den folgenden Seiten!
See the following pages for more information!



Lieferung & Zahlungsart

siehe unsere [Liefer- und Versandbedingungen](#)

Zuschläge

- Mindermengenzuschlag
- Trockeneiszuschlag
- Gefahrgutzuschlag
- Expressversand

SZABO-SCANDIC HandelsgmbH

Quellenstraße 110, A-1100 Wien

T. +43(0)1 489 3961-0

F. +43(0)1 489 3961-7

mail@szabo-scandic.com

www.szabo-scandic.com

[linkedin.com/company/szaboscandic](https://www.linkedin.com/company/szaboscandic) 

SLC20A1 monoclonal antibody (M01), clone 6A9-F2

Catalog # : H00006574-M01

規格 : [100 ug]

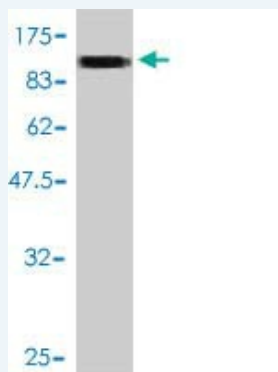
[List All](#)

Specification

| | |
|-----------------------------|---|
| Product Description: | Mouse monoclonal antibody raised against a full length recombinant SLC20A1. |
| Immunogen: | SLC20A1 (AAH19944, 1 a.a. ~ 679 a.a) full-length recombinant protein with GST tag. MW of the GST tag alone is 26 KDa. |
| Sequence: | MATLITSTTAATAASGPLVDYLWMLILGFIIAFVLAFSVGANDVANSFGTA VGSVWTLKQACILASIFETVGSVLLGAKVSETIRKGLIDVEMYNSTQGLL MAGSVSAMFGSAVWQLVASFLKLPISGTHCIVGATIGFSLVAKGQEGVK WSELIKIVMSWFVSPLLSGIMSGILFFLVRAFILHKADPVPNGLRALPVFYA CTVGINLFSIMYTGAPLLGFDKLPWGTILISVGCALVWFFVCPRM KRKIEREIKCSPSESPLMEKKNSLKEDHEETKLSVGDIENTKHPVSEVGPAT VPLQAVVEERTVSFKLGDLEEAPERERLPSVDLKEETSIDSTVNGAVQLP NGNLVQFSQAVSNQINSSGHYQYHTVHKDSGLYKELLHKLHLAKVGD GDSGDKPLRRNNSYTSYMAICGMPLDSFRAKEGEQKGEEMEKLTPWN ADSKKRIRMDSYTSYCNVSDLHSAEIDMSVKAEMGLGDRKGSNGSLE EWYDQDKPEVSLLFQFLQILTACFGSFAHGGNDVSNAGPLVALYLVDYD GDVSSKVATPIWLLLYGGVGICVGLWWWGRRVIQTMGKDLTPITPSSGF SIELASALTVIASNIGLPISTTHCKVGSVSVGWLRSKKAVDWRLFRNIFM AWFVTVPISGVISAAIMAIFRYVILRM |
| Host: | Mouse |
| Reactivity: | Human |
| Isotype: | IgG2a kappa |

Quality Control Antibody Reactive Against Recombinant Protein.

Testing:



Western Blot detection against Immunogen (100.43 KDa) .

Storage Buffer: In 1x PBS, pH 7.4

Storage Instruction: Store at -20°C or lower. Aliquot to avoid repeated freezing and thawing.

MSDS: [Download](#)

Datasheet: [Download](#)

Applications

Application Image

Western Blot (Recombinant protein)
Sandwich ELISA (Recombinant protein)
ELISA

Western Blot (Recombinant protein)

 [Protocol Download](#)

Sandwich ELISA (Recombinant protein)

Detection limit for recombinant GST tagged SLC20A1 is approximately 10ng/ml as a capture antibody.

 [Protocol Download](#)

ELISA

Gene Information

Entrez GeneID: [6574](#)

GeneBank Accession#: [BC019944](#)

Protein Accession#: [AAH19944](#)

Gene Name: SLC20A1

Gene Alias: DKFZp686J2397,FLJ41426,GLVR1,Glvr-1,PIT1,PiT-1

Gene Description: solute carrier family 20 (phosphate transporter), member 1

Omim ID: [137570](#)

Gene Ontology: [Hyperlink](#)

Gene Summary: Retrovirus receptors allow infection of human and murine cells by various retroviruses. The receptors that have been identified at the molecular level include CD4 (MIM 186940) for human immunodeficiency virus, Rec1 for murine ecotropic virus, and GLVR1 for gibbon ape leukemia virus (see MIM 182090). These 3 proteins show no homology to one another at the DNA or protein level. GLVR1 is a sodium-dependent phosphate symporter.[supplied by OMIM]

Other Designations: gibbon ape leukemia virus receptor 1

Related Disease

[Breast cancer](#) [Breast Neoplasms](#) [Cardiovascular Diseases](#) [Diabetes Mellitus, Type 2](#) [Edema](#) [Genetic Predisposition to Disease](#) [Hypertension](#) [Hypertrophy, Left Ventricular](#) [Ovarian cancer](#)