



SZABO SCANDIC

Part of Europa Biosite

Produktinformation



Forschungsprodukte & Biochemikalien



Zellkultur & Verbrauchsmaterial



Diagnostik & molekulare Diagnostik



Laborgeräte & Service

Weitere Information auf den folgenden Seiten!
See the following pages for more information!



Lieferung & Zahlungsart

siehe unsere [Liefer- und Versandbedingungen](#)

Zuschläge

- Mindermengenzuschlag
- Trockeneiszuschlag
- Gefahrgutzuschlag
- Expressversand

SZABO-SCANDIC HandelsgmbH

Quellenstraße 110, A-1100 Wien

T. +43(0)1 489 3961-0

F. +43(0)1 489 3961-7

mail@szabo-scandic.com

www.szabo-scandic.com

[linkedin.com/company/szaboscandic](https://www.linkedin.com/company/szaboscandic) 

SLC20A1 293T Cell Transient Overexpression Lysate(Denatured)

Catalog # : H00006574-T01

規格 : [100 uL]

[List All](#)

Specification

Transfected Cell Line: 293T

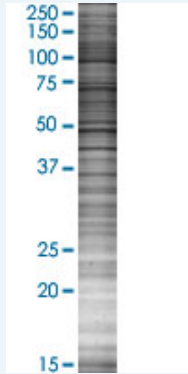
Plasmid: pCMV-SLC20A1 full-length

Host: Human

Theoretical MW (kDa): 73.7

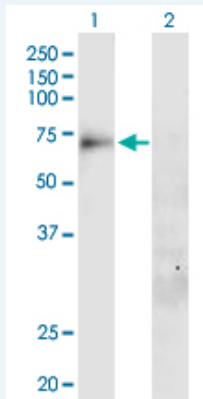
Quality Control Testing: Transient overexpression cell lysate was tested with Anti-SLC20A1 antibody (H00006574-B01P) by Western Blots.

SDS-PAGE Gel



SLC20A1 transfected lysate.

Western Blot



Lane 1: SLC20A1 transfected lysate (73.7 KDa)

Lane 2: Non-transfected lysate.

Storage Buffer: 1X Sample Buffer (50 mM Tris-HCl, 2% SDS, 10% glycerol, 300 mM 2-mercaptoethanol, 0.01% Bromophenol blue)

Storage Instruction: Store at -80°C. Aliquot to avoid repeated freezing and thawing.

MSDS:  [Download](#)

Applications

Western Blot

Gene Information

Entrez GeneID: [6574](#)

GeneBank Accession#: [NM_005415](#)

Protein Accession#: [NP_005406.3](#)

Gene Name: SLC20A1

Gene Alias: DKFZp686J2397, FLJ41426, GLVR1, Givr-1, PIT1, PiT-1

Gene Description: solute carrier family 20 (phosphate transporter), member 1

Omim ID: [137570](#)

Gene Ontology: [Hyperlink](#)

Gene Summary: Retrovirus receptors allow infection of human and murine cells by various retroviruses. The receptors that have been identified at the molecular level include CD4 (MIM 186940) for human immunodeficiency virus, Rec1 for murine ecotropic virus, and GLVR1 for gibbon ape leukemia virus (see MIM 182090). These 3 proteins show no homology to one another at the DNA or protein level. GLVR1 is a sodium-dependent phosphate symporter.[supplied by OMIM]

Other Designations: gibbon ape leukemia virus receptor 1

Related Disease

[Breast cancer](#) [Breast Neoplasms](#) [Cardiovascular Diseases](#) [Diabetes Mellitus, Type 2](#) [Edema](#) [Genetic Predisposition to Disease](#) [Hypertension](#) [Hypertrophy, Left Ventricular](#) [Ovarian cancer](#)