



SZABO SCANDIC

Part of Europa Biosite

Produktinformation



Forschungsprodukte & Biochemikalien



Zellkultur & Verbrauchsmaterial



Diagnostik & molekulare Diagnostik



Laborgeräte & Service

Weitere Information auf den folgenden Seiten!
See the following pages for more information!



Lieferung & Zahlungsart

siehe unsere [Liefer- und Versandbedingungen](#)

Zuschläge

- Mindermengenzuschlag
- Trockeneiszuschlag
- Gefahrgutzuschlag
- Expressversand

SZABO-SCANDIC HandelsgmbH

Quellenstraße 110, A-1100 Wien

T. +43(0)1 489 3961-0

F. +43(0)1 489 3961-7

mail@szabo-scandic.com

www.szabo-scandic.com

[linkedin.com/company/szaboscandic](https://www.linkedin.com/company/szaboscandic) 

SLC20A2 monoclonal antibody (M04), clone 4B1

Catalog # : H00006575-M04

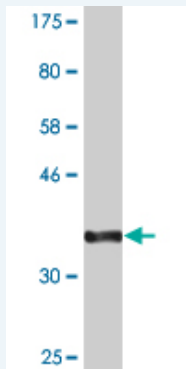
規格 : [100 ug]

[List All](#)

Specification

Product Description:	Mouse monoclonal antibody raised against a partial recombinant SLC20A2.
Immunogen:	SLC20A2 (NP_006740.1, 243 a.a. ~ 342 a.a) partial recombinant protein with GST tag. MW of the GST tag alone is 26 KDa.
Sequence:	TGKLQKEGALSRSVDESLSKVQEAESPVFKELPGAKANDDSTIPLTGAA GETLGTSEGT SAGSHPRAAAYGRALSMTHGSVKSPISNGTFGFDGHTRS DGH
Host:	Mouse
Reactivity:	Human
Isotype:	IgG2a Kappa

Quality Control Testing: Antibody Reactive Against Recombinant Protein.



Western Blot detection against Immunogen (36.74 KDa) .

Storage Buffer: In 1x PBS, pH 7.4

Storage Instruction: Store at -20°C or lower. Aliquot to avoid repeated freezing and thawing.

MSDS: [Download](#)

Datasheet: [Download](#)

Publication Reference

1. Localization of type-III sodium-dependent phosphate transporter 2 in the mouse brain. Inden M, Iriyama M, Takagi M, Kaneko M, Hozumi I Brain Res. 2013 Jul 30. pii: S0006-8993(13)01046-9. doi: 10.1016/j.brainres.2013.07.038.

Applications

Western Blot (Recombinant protein)

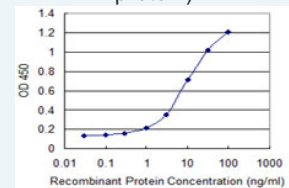
[Protocol Download](#)

Sandwich ELISA (Recombinant protein)

Application Image

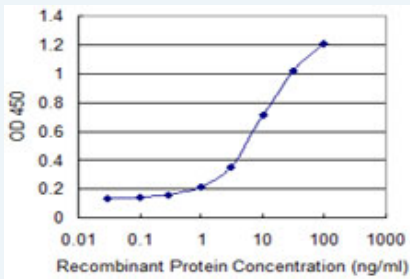
Western Blot (Recombinant protein)

Sandwich ELISA (Recombinant protein)




[enlarge](#)

ELISA



Detection limit for recombinant GST tagged SLC20A2 is 0.3 ng/ml as a capture antibody.

 [Protocol Download](#)

ELISA

Gene Information

Entrez GeneID: [6575](#)

GeneBank [NM_006749](#)

Accession#:

Protein [NP_006740.1](#)

Accession#:

Gene Name: SLC20A2

Gene Alias: GLVR2, Givr-2, MLVAR, PIT-2

Gene Description: solute carrier family 20 (phosphate transporter), member 2

Omim ID: [158378](#)

Gene Ontology: [Hyperlink](#)

Other Designations: gibbon ape leukemia virus receptor 2, murine leukemia virus, amphotropic, receptor for, solute carrier family 20, member 2

Related Disease

[Tobacco Use Disorder](#)

[服務條款](#) | [隱私權政策](#) | [著作及商標](#) | [網站地圖](#)

©2016 亞諾法生技股份有限公司 Abnova Corporation. 版權所有.