



# SZABO SCANDIC

Part of Europa Biosite

## Produktinformation



Forschungsprodukte & Biochemikalien



Zellkultur & Verbrauchsmaterial



Diagnostik & molekulare Diagnostik



Laborgeräte & Service

Weitere Information auf den folgenden Seiten!  
See the following pages for more information!



### Lieferung & Zahlungsart

siehe unsere [Liefer- und Versandbedingungen](#)

### Zuschläge

- Mindermengenzuschlag
- Trockeneiszuschlag
- Gefahrgutzuschlag
- Expressversand

### SZABO-SCANDIC HandelsgmbH

Quellenstraße 110, A-1100 Wien

T. +43(0)1 489 3961-0

F. +43(0)1 489 3961-7

[mail@szabo-scandic.com](mailto:mail@szabo-scandic.com)

[www.szabo-scandic.com](http://www.szabo-scandic.com)

[linkedin.com/company/szaboscandic](https://www.linkedin.com/company/szaboscandic) 

## SLCO2A1 polyclonal antibody (A01)

Catalog # : H00006578-A01

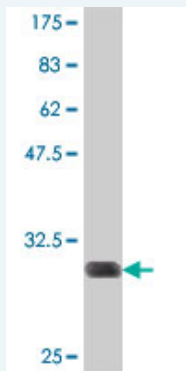
規格 : [ 50 uL ]

[List All](#)

### Specification

<b>Product Description:</b>	Mouse polyclonal antibody raised against a partial recombinant SLCO2A1.
<b>Immunogen:</b>	SLCO2A1 (NP_005621, 276 a.a. ~ 325 a.a) partial recombinant protein with GST tag.
<b>Sequence:</b>	FFFPRAMPIGAKRAPATADEARKLEEAKSRGSLVDFIKRFPCIFLRLLMN
<b>Host:</b>	Mouse
<b>Reactivity:</b>	Human

**Quality Control Testing:** Antibody Reactive Against Recombinant Protein.



Western Blot detection against Immunogen (31.61 kDa) .

**Storage Buffer:** 50 % glycerol

**Storage Instruction:** Store at -20°C or lower. Aliquot to avoid repeated freezing and thawing.

**MSDS:** [Download](#)

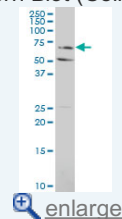
**Datasheet:** [Download](#)

### Publication Reference

- [Reduction of prostaglandin transporter predicts poor prognosis associated with angiogenesis in gastric adenocarcinoma.](#)  
Takeda S, Tanigawa T, Watanabe T, Tatsuwaki H, Nadatani Y, Otani K, Nagami Y, Tanaka F, Kamata N, Yamagami H, Shiba M, Tominaga K, Fujiwara Y, Muguruma K, Ohira M, Hirakawa K, Arakawa T. J Gastroenterol Hepatol. 2015 Aug 6. [Epub ahead of print]
- [The prostaglandin transporter OATP2A1 is expressed in human ocular tissues and transports the antiglaucoma prostanoid latanoprost.](#)  
Kraft ME, Glaeser H, Mandery K, Konig J, Auge D, Fromm MF, Schlotzer-Schrehardt U, Welge-Lussen U, Kruse FE, Zolk O. Invest Ophthalmol Vis Sci. 2010 May;51(5):2504-11. Epub 2009 Dec 17.
- [Influence of cyclooxygenase inhibitors on the function of the prostaglandin transporter organic anion-transporting polypeptide 2A1 expressed in human gastroduodenal](#)

### Application Image

Western Blot (Cell lysate)



Western Blot (Recombinant protein)

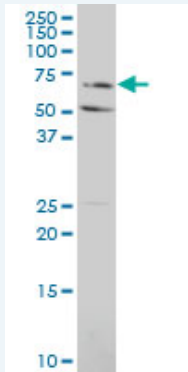
ELISA

mucosa.


Mandery K, Bujok K, Schmidt I, Wex T, Treiber G, Malfertheiner P, Rau TT, Amann KU, Brune K, Fromm MF, Glaeser H.J Pharmacol Exp Ther. 2010 Feb;332(2):345-51. Epub 2009 Oct 20.

## Applications

### Western Blot (Cell lysate)



SLCO2A1 polyclonal antibody (A01), Lot # 060529JCS1 Western Blot analysis of SLCO2A1 expression in HL-60 ( Cat # L014V1 ).

 [Protocol Download](#)

### Western Blot (Recombinant protein)

 [Protocol Download](#)

## ELISA

## Gene Information

Entrez GeneID: [6578](#)

GeneBank [NM\\_005630](#)  
Accession#:

Protein [NP\\_005621](#)  
Accession#:

Gene Name: SLCO2A1

Gene Alias: OATP2A1,PGT,SLC21A2

Gene Description: solute carrier organic anion transporter family, member 2A1

Omim ID: [601460](#)

Gene Ontology: [Hyperlink](#)

Other Designations: solute carrier family 21 (prostaglandin transporter), member 2

## Related Disease

[Genetic Predisposition to Disease Hyperbilirubinemia Hyperparathyroidism, Secondary](#)