



# SZABO SCANDIC

Part of Europa Biosite

## Produktinformation



Forschungsprodukte & Biochemikalien



Zellkultur & Verbrauchsmaterial



Diagnostik & molekulare Diagnostik



Laborgeräte & Service

Weitere Information auf den folgenden Seiten!  
See the following pages for more information!



### Lieferung & Zahlungsart

siehe unsere [Liefer- und Versandbedingungen](#)

### Zuschläge

- Mindermengenzuschlag
- Trockeneiszuschlag
- Gefahrgutzuschlag
- Expressversand

### SZABO-SCANDIC HandelsgmbH

Quellenstraße 110, A-1100 Wien

T. +43(0)1 489 3961-0

F. +43(0)1 489 3961-7

[mail@szabo-scandic.com](mailto:mail@szabo-scandic.com)

[www.szabo-scandic.com](http://www.szabo-scandic.com)

[linkedin.com/company/szaboscandic](https://www.linkedin.com/company/szaboscandic) 

## SLPI polyclonal antibody (A01)

Catalog # : H00006590-A01

規格 : [ 50 uL ]

List All

### Specification

**Product Description:** Mouse polyclonal antibody raised against a partial recombinant SLPI.

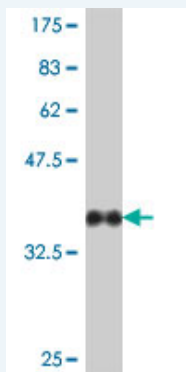
**Immunogen:** SLPI (NP\_003055, 33 a.a. ~ 132 a.a) partial recombinant protein with GST tag.

**Sequence:** GVCPPKSAQCLRYKKPECQSDWQCPGKKRCCPDTCGIKCLDPVDTP  
NPTRRKPGKCPVTYGQCLMLNPPNFCEMDGQCKRDLKCCMGMGKGS  
CVSPVKA

**Host:** Mouse

**Reactivity:** Human

**Quality Control Testing:** Antibody Reactive Against Recombinant Protein.



Western Blot detection against Immunogen (37.11 kDa) .

**Storage Buffer:** 50 % glycerol

**Storage Instruction:** Store at -20°C or lower. Aliquot to avoid repeated freezing and thawing.

**MSDS:** [Download](#)

**Datasheet:** [Download](#)

### Applications

**Western Blot (Recombinant protein)**

[Protocol Download](#)

**ELISA**

### Gene Information

**Entrez GeneID:** [6590](#)

**GeneBank Accession#:** [NM\\_003064](#)

<b>Protein Accession#:</b>	<a href="#">NP_003055</a>
<b>Gene Name:</b>	SLPI
<b>Gene Alias:</b>	ALK1,ALP,BLPI,HUSI,HUSH-I,MPI,WAP4,WFDC4
<b>Gene Description:</b>	secretory leukocyte peptidase inhibitor
<b>Omim ID:</b>	<a href="#">107285</a>
<b>Gene Ontology:</b>	<a href="#">Hyperlink</a>
<b>Gene Summary:</b>	This gene encodes a secreted inhibitor which protects epithelial tissues from serine proteases. It is found in various secretions including seminal plasma, cervical mucus, and bronchial secretions, and has affinity for trypsin, leukocyte elastase, and cathepsin G. Its inhibitory effect contributes to the immune response by protecting epithelial surfaces from attack by endogenous proteolytic enzymes; the protein is also thought to have broad-spectrum anti-biotic activity. [provided by RefSeq]
<b>Other Designations:</b>	OTTHUMP00000031775,WAP four-disulfide core domain 4,antileukoproteinase,mucus proteinase inhibitor,secretory leukocyte protease inhibitor (antileukoproteinase),seminal proteinase inhibitor

[服務條款](#) | [隱私權政策](#) | [著作及商標](#) | [網站地圖](#)

©2016 亞諾法生技股份有限公司 Abnova Corporation. 版權所有.