



SZABO SCANDIC

Part of Europa Biosite

Produktinformation



Forschungsprodukte & Biochemikalien



Zellkultur & Verbrauchsmaterial



Diagnostik & molekulare Diagnostik



Laborgeräte & Service

Weitere Information auf den folgenden Seiten!
See the following pages for more information!



Lieferung & Zahlungsart

siehe unsere [Liefer- und Versandbedingungen](#)

Zuschläge

- Mindermengenzuschlag
- Trockeneiszuschlag
- Gefahrgutzuschlag
- Expressversand

SZABO-SCANDIC HandelsgmbH

Quellenstraße 110, A-1100 Wien

T. +43(0)1 489 3961-0

F. +43(0)1 489 3961-7

mail@szabo-scandic.com

www.szabo-scandic.com

[linkedin.com/company/szaboscandic](https://www.linkedin.com/company/szaboscandic) 

SLPI purified MaxPab mouse polyclonal antibody (B01P) MaxPab®

Catalog # : H00006590-B01P

規格 : [50 ug]

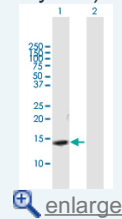
List All

Specification

Product Description:	Mouse polyclonal antibody raised against a full-length human SLPI protein.
Immunogen:	SLPI (ABM85471.1, 1 a.a. ~ 132 a.a) full-length human protein.
Sequence:	MKSSGLFPFLVLLALGTLAPWAVEGSGKSFKAGVCPPKSAQCLRYKK PECQSDWQCPGKKRCCPDTGKICLDPVDTNPTRRKP GKCPVTYGG CLMLNPPNFCEMDGQCKRDLKCCMGMC GKSCVSPVKA
Host:	Mouse
Reactivity:	Human
Quality Control Testing:	Antibody reactive against mammalian transfected lysate.
Storage Buffer:	In 1x PBS, pH 7.4
Storage Instruction:	Store at -20°C or lower. Aliquot to avoid repeated freezing and thawing.
MSDS:	Download
Datasheet:	Download

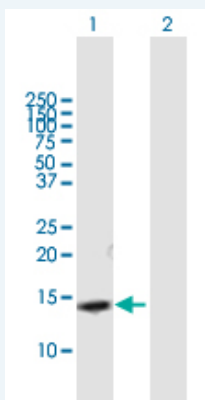
Application Image

Western Blot (Transfected lysate)



Applications

Western Blot (Transfected lysate)



Western Blot analysis of SLPI expression in transfected 293T cell line ([H00006590-T03](#)) by SLPI MaxPab polyclonal antibody.

Lane 1: SLPI transfected lysate(14.52 KDa).

Lane 2: Non-transfected lysate.

[Protocol Download](#)

Gene Information

Entrez GeneID: [6590](#)

GeneBank [DQ894545.2](#)
Accession#:

Protein [ABM85471.1](#)
Accession#:

Gene Name: SLPI

Gene Alias: ALK1,ALP,BLPI,HUSI,HUSI-I,MPI,WAP4,WFDC4

Gene secretory leukocyte peptidase inhibitor
Description:

Omim ID: [107285](#)

Gene Ontology: [Hyperlink](#)

Gene Summary: This gene encodes a secreted inhibitor which protects epithelial tissues from serine proteases. It is found in various secretions including seminal plasma, cervical mucus, and bronchial secretions, and has affinity for trypsin, leukocyte elastase, and cathepsin G. Its inhibitory effect contributes to the immune response by protecting epithelial surfaces from attack by endogenous proteolytic enzymes; the protein is also thought to have broad-spectrum anti-biotic activity. [provided by RefSeq]

Other OTTHUMP00000031775,WAP four-disulfide core domain
Designations: 4,antileukoproteinase,mucus proteinase inhibitor,secretory leukocyte protease inhibitor (antileukoproteinase),seminal proteinase inhibitor

[服務條款](#) | [隱私權政策](#) | [著作及商標](#) | [網站地圖](#)

©2016 亞諾法生技股份有限公司 Abnova Corporation. 版權所有.