



SZABO SCANDIC

Part of Europa Biosite

Produktinformation



Forschungsprodukte & Biochemikalien



Zellkultur & Verbrauchsmaterial



Diagnostik & molekulare Diagnostik



Laborgeräte & Service

Weitere Information auf den folgenden Seiten!
See the following pages for more information!



Lieferung & Zahlungsart

siehe unsere [Liefer- und Versandbedingungen](#)

Zuschläge

- Mindermengenzuschlag
- Trockeneiszuschlag
- Gefahrgutzuschlag
- Expressversand

SZABO-SCANDIC HandelsgmbH

Quellenstraße 110, A-1100 Wien

T. +43(0)1 489 3961-0

F. +43(0)1 489 3961-7

mail@szabo-scandic.com

www.szabo-scandic.com

[linkedin.com/company/szaboscandic](https://www.linkedin.com/company/szaboscandic) 

SNAI2 monoclonal antibody (M07), clone 2E10

Catalog # : H00006591-M07

規格 : [100 ug]

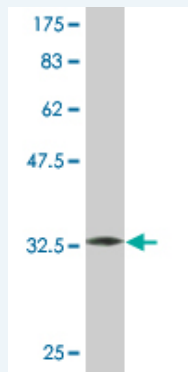
[List All](#)

Specification

Product Description:	Mouse monoclonal antibody raised against a full-length recombinant SNAI2.
Immunogen:	SNAI2 (NP_003059, 69 a.a. ~ 132 a.a) full-length recombinant protein with GST tag. MW of the GST tag alone is 26 KDa.
Sequence:	LPNGLSPLSGYSSSLGRVSPPPSDTSSKDHSGSESPISDEEERLQSKLS DPHAIEAEKFQCN
Host:	Mouse
Reactivity:	Human
Isotype:	IgG2a Kappa

Quality Control Antibody Reactive Against Recombinant Protein.

Testing:



Western Blot detection against Immunogen (32.78 KDa) .

Storage Buffer: In 1x PBS, pH 7.4

Storage Instruction: Store at -20°C or lower. Aliquot to avoid repeated freezing and thawing.

MSDS: [Download](#)

Datasheet: [Download](#)

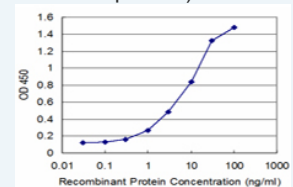
Publication Reference

- [Endoplasmic reticulum protein 29 regulates epithelial cell integrity during the mesenchymal-epithelial transition in breast cancer cells.](#)
Bambang IF, Lee YK, Richardson DR, Zhang D. *Oncogene*. 2012 Apr 30. doi: 10.1038/onc.2012.149.
- [Endosomal sorting by Semaphorin 4A in retinal pigment epithelium supports photoreceptor survival.](#)
Toyofuku T, Nojima S, Ishikawa T, Takamatsu H, Tsujimura T, Uemura A, Matsuda J, Seki T, Kumanogoh A. *Genes Dev*. 2012 Apr 15;26(8):816-29. Epub 2012 Mar 30.

Applications

Application Image

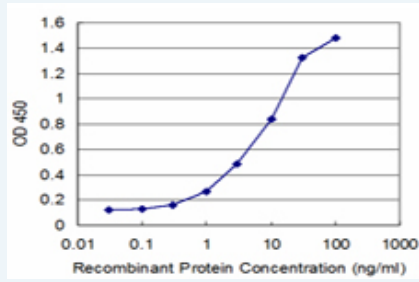
Sandwich ELISA (Recombinant protein)



[enlarge](#)

ELISA

Sandwich ELISA (Recombinant protein)



Detection limit for recombinant GST tagged SNAI2 is approximately 0.3ng/ml as a capture antibody.

 [Protocol Download](#)

ELISA

Gene Information

Entrez GeneID: [6591](#)

GeneBank [NM_003068](#)
Accession#:

Protein [NP_003059](#)
Accession#:

Gene Name: SNAI2

Gene Alias: MGC10182,SLUG,SLUGH1,WS2D

Gene Description: snail homolog 2 (Drosophila)

Omim ID: [172800](#), [602150](#), [608890](#)

Gene Ontology: [Hyperlink](#)

Gene Summary: This gene encodes a member of the Snail family of C2H2-type zinc finger transcription factors. The encoded protein acts as a transcriptional repressor that binds to E-box motifs and is also likely to repress E-cadherin transcription in breast carcinoma. This protein is involved in epithelial-mesenchymal transitions and has antiapoptotic activity. Mutations in this gene may be associated with sporadic cases of neural tube defects. [provided by RefSeq]

Other Designations: OTTHUMP00000195093,neural crest transcription factor SLUG,slug (chicken homolog), zinc finger protein,slug homolog, zinc finger protein,snail 2

Gene Pathway

[Adherens junction](#)

Related Disease

[Cleft Lip Cleft Palate](#)