



SZABO SCANDIC

Part of Europa Biosite

Produktinformation



Forschungsprodukte & Biochemikalien



Zellkultur & Verbrauchsmaterial



Diagnostik & molekulare Diagnostik



Laborgeräte & Service

Weitere Information auf den folgenden Seiten!
See the following pages for more information!



Lieferung & Zahlungsart

siehe unsere [Liefer- und Versandbedingungen](#)

Zuschläge

- Mindermengenzuschlag
- Trockeneiszuschlag
- Gefahrgutzuschlag
- Expressversand

SZABO-SCANDIC HandelsgmbH

Quellenstraße 110, A-1100 Wien

T. +43(0)1 489 3961-0

F. +43(0)1 489 3961-7

mail@szabo-scandic.com

www.szabo-scandic.com

[linkedin.com/company/szaboscandic](https://www.linkedin.com/company/szaboscandic) 

SMARCA2 polyclonal antibody (A01)

Catalog # : H00006595-A01

規格 : [50 uL]

List All

Specification

Product Description: Mouse polyclonal antibody raised against a partial recombinant SMARCA2.

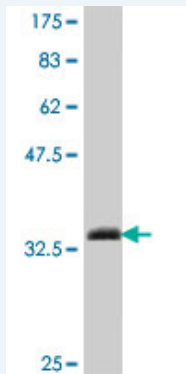
Immunogen: SMARCA2 (NP_003061, 659 a.a. ~ 735 a.a) partial recombinant protein with GST tag.

Sequence: KILLDPNSEEVSEKDAKQIIETAKQDVDDEYSMQYSARGSQSYTVAHAIS ERVEKQSALLINGTLKHYQLQGLEWM

Host: Mouse

Reactivity: Human

Quality Control Testing: Antibody Reactive Against Recombinant Protein.



Western Blot detection against Immunogen (34.58 KDa) .

Storage Buffer: 50 % glycerol

Storage Instruction: Store at -20°C or lower. Aliquot to avoid repeated freezing and thawing.

MSDS: [Download](#)

Datasheet: [Download](#)

Applications

Western Blot (Recombinant protein)

[Protocol Download](#)

ELISA

Gene Information

Entrez GeneID: [6595](#)

GeneBank Accession#: [NM_003070](#)

Protein [NP_003061](#)

Accession#:

Gene Name: SMARCA2

Gene Alias: BAF190,BRM,FLJ36757,MGC74511,SNF2,SNF2L2,SNF2LA,SWI2,Sth1p,hBRM,hSNF2a

Gene Description: SWI/SNF related, matrix associated, actin dependent regulator of chromatin, subfamily a, member 2

Omim ID: [600014](#)

Gene Ontology: [Hyperlink](#)

Gene Summary: The protein encoded by this gene is a member of the SWI/SNF family of proteins and is highly similar to the brahma protein of Drosophila. Members of this family have helicase and ATPase activities and are thought to regulate transcription of certain genes by altering the chromatin structure around those genes. The encoded protein is part of the large ATP-dependent chromatin remodeling complex SNF/SWI, which is required for transcriptional activation of genes normally repressed by chromatin. Two transcript variants encoding different isoforms have been found for this gene, which contains a trinucleotide repeat (CAG) length polymorphism. [provided by RefSeq]

Other Designations: OTTHUMP00000020970,OTTHUMP00000020971,SNF2-alpha,SNF2-like 2,SNF2/SWI2-like protein 2,SWI/SNF-related matrix-associated actin-dependent regulator of chromatin a2,global transcription activator homologous sequence,sucrose nonfermenting 2-like protein 2

Related Disease

[Breast cancer](#) [Breast Neoplasms](#) [Schizophrenia](#) [Schizophrenia](#) [Tobacco Use Disorder](#)

[服務條款](#) | [隱私權政策](#) | [著作及商標](#) | [網站地圖](#)

©2016 亞諾法生技股份有限公司 Abnova Corporation. 版權所有.