



SZABO SCANDIC

Part of Europa Biosite

Produktinformation



Forschungsprodukte & Biochemikalien



Zellkultur & Verbrauchsmaterial



Diagnostik & molekulare Diagnostik



Laborgeräte & Service

Weitere Information auf den folgenden Seiten!
See the following pages for more information!



Lieferung & Zahlungsart

siehe unsere [Liefer- und Versandbedingungen](#)

Zuschläge

- Mindermengenzuschlag
- Trockeneiszuschlag
- Gefahrgutzuschlag
- Expressversand

SZABO-SCANDIC HandelsgmbH

Quellenstraße 110, A-1100 Wien

T. +43(0)1 489 3961-0

F. +43(0)1 489 3961-7

mail@szabo-scandic.com

www.szabo-scandic.com

[linkedin.com/company/szaboscandic](https://www.linkedin.com/company/szaboscandic) 



SMARCB1 purified MaxPab rabbit polyclonal antibody (D01P) MaxPab®

Catalog # : H00006598-D01P

規格 : [100 ug]

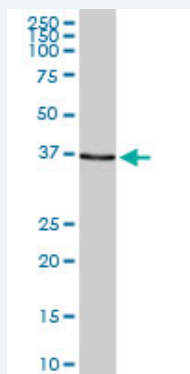
[List All](#)

Specification


Product Description:	Rabbit polyclonal antibody raised against a full-length human SMARCB1 protein.
Immunogen:	SMARCB1 (NP_003064.2, 1 a.a. ~ 385 a.a) full-length human protein.
Sequence:	<pre> MMMMALSKTFGQKPVKFKLEDDGEFYMIGSEVGNLYRMFRGSLYKRYP SLWRRRLATVEERKKIVASSHGKTKPNTKDHGYTTLATSVTLLKASEVEEI LDGNDEKYKAVSISTEPPTYLREQKAKRNSQWVPTLPNSSHHLDAVPCS TTINRNRMGDRDKKRTFPLCFDDHDPVHENSQPEVLVPIRLDMEIDGQ KLRDAFTWNMNEKLMTPMFSEILCDDLNLPLTFVPAIASAIRQQIESYP TDSILEDQSDQRVIKLNHVGNISLVDQFEWDMSEKENSPEKFALKLCELE GLGGEFVTTIAYSIRGQLSWHQKTYAFSENPLPTVEIAIRNTGDADQWCP LLETLTDAEMKIRDQDRNTRRMRLANTAPAW </pre>
Host:	Rabbit
Reactivity:	Human, Mouse
Quality Control Testing:	Antibody reactive against mammalian transfected lysate.
Storage Buffer:	In 1x PBS, pH 7.4
Storage Instruction:	Store at -20°C or lower. Aliquot to avoid repeated freezing and thawing.
MSDS:	 Download
Datasheet:	 Download

Applications

Western Blot (Tissue lysate)



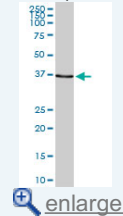
SMARCB1 MaxPab rabbit polyclonal antibody. Western Blot analysis of SMARCB1 expression in mouse intestine.


 [Protocol Download](#)

Western Blot (Transfected lysate)

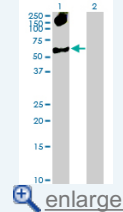
Application Image

Western Blot (Tissue lysate)



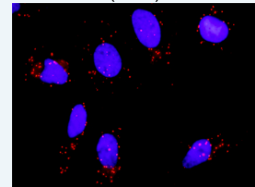
 [enlarge](#)

Western Blot (Transfected lysate)



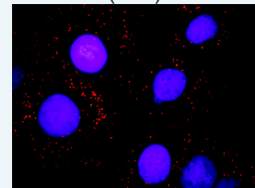
 [enlarge](#)

In situ Proximity Ligation Assay (Cell)

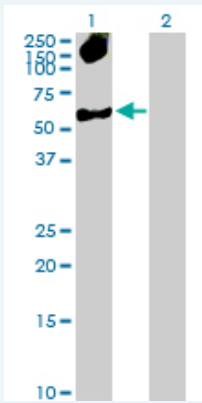


 [enlarge](#)

In situ Proximity Ligation Assay (Cell)



 [enlarge](#)

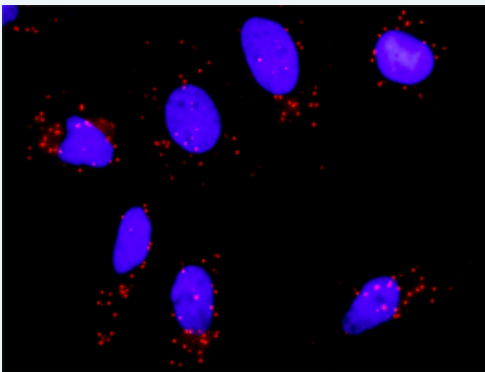


Western Blot analysis of SMARCB1 expression in transfected 293T cell line ([H00006598-T01](#)) by SMARCB1 MaxPab polyclonal antibody.

Lane 1: SMARCB1 transfected lysate(44.10 KDa).
Lane 2: Non-transfected lysate.

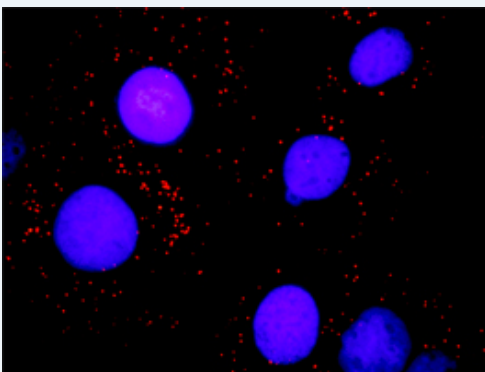
Protocol Download

In situ Proximity Ligation Assay (Cell)



Proximity Ligation Analysis of protein-protein interactions between SMARCB1 and BAZ1B. HeLa cells were stained with anti-SMARCB1 rabbit purified polyclonal 1:1200 and anti-BAZ1B mouse monoclonal antibody 1:50. Each red dot represents the detection of protein-protein interaction complex, and nuclei were counterstained with DAPI (blue).

In situ Proximity Ligation Assay (Cell)



Proximity Ligation Analysis of protein-protein interactions between SMARCB1 and BAZ1B. Huh7 cells were stained with anti-SMARCB1 rabbit purified polyclonal 1:1200 and anti-BAZ1B mouse monoclonal antibody 1:50. Each red dot represents the detection of protein-protein interaction complex, and nuclei were counterstained with DAPI (blue).

Gene Information

Entrez GeneID: [6598](#)

GeneBank [NM_003073](#)

Accession#:

Protein [NP_003064.2](#)

Accession#:

Gene Name: SMARCB1

Gene Alias: BAF47,INI1,RDT,SNF5,SNF5L1,Sfh1p,Snr1,hSNFS

Gene Description: SWI/SNF related, matrix associated, actin dependent regulator of chromatin, subfamily b, member 1

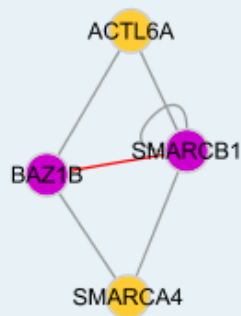
Omim ID: [601607](#)

Gene Ontology: [Hyperlink](#)

Gene Summary: The protein encoded by this gene is part of a complex that relieves repressive chromatin structures, allowing the transcriptional machinery to access its targets more effectively. The encoded nuclear protein may also bind to and enhance the DNA joining activity of HIV-1 integrase. This gene has been found to be a tumor suppressor, and mutations in it have been associated with malignant rhabdoid tumors. Two transcript variants encoding different isoforms have been found for this gene. [provided by RefSeq]

Other Designations: integrase interactor 1,malignant rhabdoid tumor suppressor,sucrose nonfermenting, yeast, homolog-like 1

Interactome



Related Disease

[Asthma](#) [Asthma](#) [Cardiovascular Diseases](#) [Diabetes Mellitus, Type 2](#) [Edema](#)
[Genetic Predisposition to Disease](#) [Meningeal Neoplasms](#) [Meningioma](#) [Pancreatic cancer](#)
[Pancreatic Neoplasms](#) [Rhabdoid Tumor](#)

[服務條款](#) | [隱私權政策](#) | [著作及商標](#) | [網站地圖](#)

©2016 亞諾法生技股份有限公司 Abnova Corporation. 版權所有.