



# SZABO SCANDIC

Part of Europa Biosite

## Produktinformation



Forschungsprodukte & Biochemikalien



Zellkultur & Verbrauchsmaterial



Diagnostik & molekulare Diagnostik



Laborgeräte & Service

Weitere Information auf den folgenden Seiten!  
See the following pages for more information!



### Lieferung & Zahlungsart

siehe unsere [Liefer- und Versandbedingungen](#)

### Zuschläge

- Mindermengenzuschlag
- Trockeneiszuschlag
- Gefahrgutzuschlag
- Expressversand

### SZABO-SCANDIC HandelsgmbH

Quellenstraße 110, A-1100 Wien

T. +43(0)1 489 3961-0

F. +43(0)1 489 3961-7

[mail@szabo-scandic.com](mailto:mail@szabo-scandic.com)

[www.szabo-scandic.com](http://www.szabo-scandic.com)

[linkedin.com/company/szaboscandic](https://www.linkedin.com/company/szaboscandic) 

## SMARCB1 monoclonal antibody (M14), clone 2H1

Catalog # : H00006598-M14

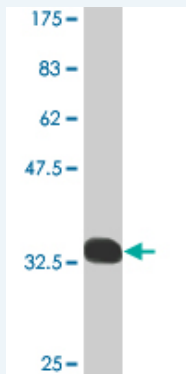
規格 : [ 100 ug ]

[List All](#)

### Specification

|                             |  |
|-----------------------------|--|
| <b>Product Description:</b> | Mouse monoclonal antibody raised against a full-length recombinant SMARCB1.  |
| <b>Immunogen:</b>           | SMARCB1 (NP_002922, 123 a.a. ~ 202 a.a) full-length recombinant protein with GST tag. MW of the GST tag alone is 26 KDa. |
| <b>Sequence:</b>            | VPTLPNSSHHLDAVPCSTTINRNRMGRDKKRTFPLCFDDHDPVHENAS<br>QPEVLVPIRLDMEIDGQKLRDAFTWNMNE  |
| <b>Host:</b>                | Mouse  |
| <b>Reactivity:</b>          | Human  |
| <b>Isotype:</b>             | IgG2b Kappa  |

**Quality Control Testing:** Antibody Reactive Against Recombinant Protein.



Western Blot detection against Immunogen (34.80 KDa) .

**Storage Buffer:** In 1x PBS, pH 7.4

**Storage Instruction:** Store at -20°C or lower. Aliquot to avoid repeated freezing and thawing.

**MSDS:** [Download](#)

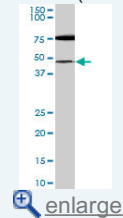
**Datasheet:** [Download](#)

### Applications

Western Blot (Cell lysate)

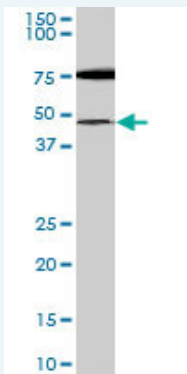
### Application Image

Western Blot (Cell lysate)



Western Blot (Recombinant protein)

ELISA



SMARCB1 monoclonal antibody (M14), clone 2H1. Western Blot analysis of SMARCB1 expression in IMR-32 ( Cat # L008V1 ).

 [Protocol Download](#)

---

#### Western Blot (Recombinant protein)

 [Protocol Download](#)

---

#### ELISA

---

#### Gene Information

**Entrez GeneID:** [6598](#)

**GeneBank** [NM\\_002931](#)

**Accession#:**

**Protein** [NP\\_002922](#)

**Accession#:**

**Gene Name:** SMARCB1

**Gene Alias:** BAF47,INI1,RDT,SNF5,SNF5L1,Sfh1p,Snr1,hSNFS

**Gene Description:** SWI/SNF related, matrix associated, actin dependent regulator of chromatin, subfamily b, member 1

**Omim ID:** [601607](#)

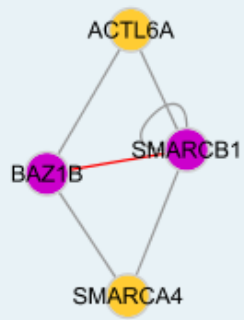
**Gene Ontology:** [Hyperlink](#)

**Gene Summary:** The protein encoded by this gene is part of a complex that relieves repressive chromatin structures, allowing the transcriptional machinery to access its targets more effectively. The encoded nuclear protein may also bind to and enhance the DNA joining activity of HIV-1 integrase. This gene has been found to be a tumor suppressor, and mutations in it have been associated with malignant rhabdoid tumors. Two transcript variants encoding different isoforms have been found for this gene. [provided by RefSeq]

**Other Designations:** integrase interactor 1,malignant rhabdoid tumor suppressor,sucrose nonfermenting, yeast, homolog-like 1

---

#### Interactome



#### Related Disease

[Asthma](#) [Asthma](#) [Cardiovascular Diseases](#) [Diabetes Mellitus, Type 2](#) [Edema](#)  
[Genetic Predisposition to Disease](#) [Meningeal Neoplasms](#) [Meningioma](#) [Pancreatic cancer](#)  
[Pancreatic Neoplasms](#) [Rhabdoid Tumor](#)

[服務條款](#) | [隱私權政策](#) | [著作及商標](#) | [網站地圖](#)

©2016 亞諾法生技股份有限公司 Abnova Corporation. 版權所有.