



# SZABO SCANDIC

Part of Europa Biosite

## Produktinformation



Forschungsprodukte & Biochemikalien



Zellkultur & Verbrauchsmaterial



Diagnostik & molekulare Diagnostik



Laborgeräte & Service

Weitere Information auf den folgenden Seiten!  
See the following pages for more information!



### Lieferung & Zahlungsart

siehe unsere [Liefer- und Versandbedingungen](#)

### Zuschläge

- Mindermengenzuschlag
- Trockeneiszuschlag
- Gefahrgutzuschlag
- Expressversand

### SZABO-SCANDIC HandelsgmbH

Quellenstraße 110, A-1100 Wien

T. +43(0)1 489 3961-0

F. +43(0)1 489 3961-7

[mail@szabo-scandic.com](mailto:mail@szabo-scandic.com)

[www.szabo-scandic.com](http://www.szabo-scandic.com)

[linkedin.com/company/szaboscandic](https://www.linkedin.com/company/szaboscandic) 

## SMARCC1 polyclonal antibody (A01)

Catalog # : H00006599-A01

規格 : [ 50 uL ]

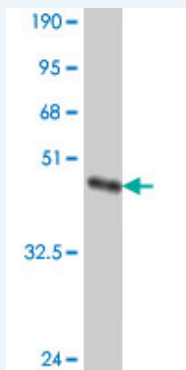
List All

### Specification

<b>Product Description:</b>	Mouse polyclonal antibody raised against a partial recombinant SMARCC1.
<b>Immunogen:</b>	SMARCC1 (NP_003065, 338 a.a. ~ 437 a.a) partial recombinant protein with GST tag.
<b>Sequence:</b>	ESRKSGKGGKQASLYGKRRSQKEEDEQEDLTQDMEDPTVPNIEEVLP KNVNLKKDSENTPVKGGTVADLDEQDEETVTAGGKEDEDPAKGDQSRS VDL
<b>Host:</b>	Mouse
<b>Reactivity:</b>	Human

**Quality Control** Antibody Reactive Against Recombinant Protein.

**Testing:**



Western Blot detection against Immunogen (37.11 KDa) .

**Storage Buffer:** 50 % glycerol

**Storage Instruction:** Store at -20°C or lower. Aliquot to avoid repeated freezing and thawing.

**MSDS:** [Download](#)

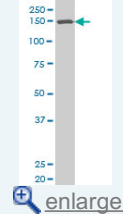
**Datasheet:** [Download](#)

### Applications

Western Blot (Cell lysate)

### Application Image

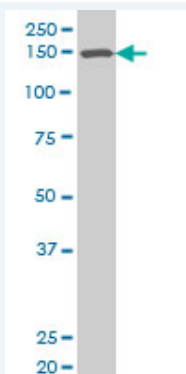
Western Blot (Cell lysate)



[enlarge](#)

Western Blot (Recombinant protein)

ELISA



SMARCC1 polyclonal antibody (A01), Lot # 051012JC01 Western Blot analysis of SMARCC1 expression in SJCRH30 ( Cat # L027V1 ).

 [Protocol Download](#)

#### Western Blot (Recombinant protein)

 [Protocol Download](#)

#### ELISA

#### Gene Information

**Entrez GeneID:** [6599](#)

**GeneBank Accession#:** [NM\\_003074](#)

**Protein Accession#:** [NP\\_003065](#)

**Gene Name:** SMARCC1

**Gene Alias:** BAF155,CRACC1,Rsc8,SRG3,SWI3

**Gene Description:** SWI/SNF related, matrix associated, actin dependent regulator of chromatin, subfamily c, member 1

**Omim ID:** [601732](#)

**Gene Ontology:** [Hyperlink](#)

**Gene Summary:** The protein encoded by this gene is a member of the SWI/SNF family of proteins, whose members display helicase and ATPase activities and which are thought to regulate transcription of certain genes by altering the chromatin structure around those genes. The encoded protein is part of the large ATP-dependent chromatin remodeling complex SNF/SWI and contains a predicted leucine zipper motif typical of many transcription factors. [provided by RefSeq]

**Other Designations:** SWI/SNF complex 155 kDa subunit,SWI/SNF-related matrix-associated actin-dependent regulator of chromatin c1,chromatin remodeling complex BAF155 subunit,mammalian chromatin remodeling complex BRG1-associated factor 155

#### Related Disease

[Genetic Predisposition to Disease Schizophrenia](#) [Schizophrenia](#) [Tobacco Use Disorder](#)