



SZABO SCANDIC

Part of Europa Biosite

Produktinformation



Forschungsprodukte & Biochemikalien



Zellkultur & Verbrauchsmaterial



Diagnostik & molekulare Diagnostik



Laborgeräte & Service

Weitere Information auf den folgenden Seiten!
See the following pages for more information!



Lieferung & Zahlungsart

siehe unsere [Liefer- und Versandbedingungen](#)

Zuschläge

- Mindermengenzuschlag
- Trockeneiszuschlag
- Gefahrgutzuschlag
- Expressversand

SZABO-SCANDIC HandelsgmbH

Quellenstraße 110, A-1100 Wien

T. +43(0)1 489 3961-0

F. +43(0)1 489 3961-7

mail@szabo-scandic.com

www.szabo-scandic.com

[linkedin.com/company/szaboscandic](https://www.linkedin.com/company/szaboscandic) 

SMARCD2 monoclonal antibody (M01), clone 2F7

Catalog # : H00006603-M01

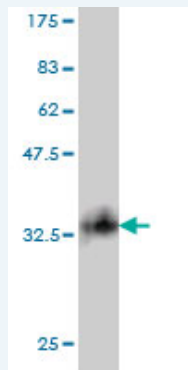
規格 : [100 ug]

[List All](#)

Specification

Product Description:	Mouse monoclonal antibody raised against a partial recombinant SMARCD2.
Immunogen:	SMARCD2 (NP_003068, 398 a.a. ~ 474 a.a) partial recombinant protein with GST tag. MW of the GST tag alone is 26 KDa.
Sequence:	RDFMLSFSTDPQDFIQEWLRSQRRDLKITDVIGNPEEERRAAFYHQPW AQEAVGRHIFAKVQRRRQELEQVLGIRL
Host:	Mouse
Reactivity:	Human
Isotype:	IgG2a Kappa

Quality Control Testing: Antibody Reactive Against Recombinant Protein.



Storage Buffer: In 1x PBS, pH 7.4

Storage Instruction: Store at -20°C or lower. Aliquot to avoid repeated freezing and thawing.

MSDS: [Download](#)

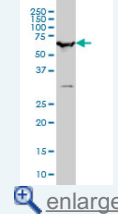
Datasheet: [Download](#)

Applications

Western Blot (Cell lysate)

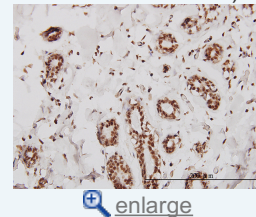
Application Image

Western Blot (Cell lysate)

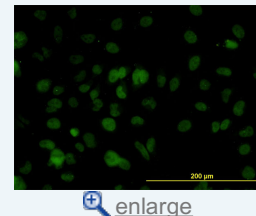


Western Blot (Recombinant protein)

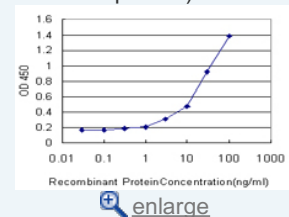
Immunohistochemistry (Formalin/PFA-fixed paraffin-embedded sections)



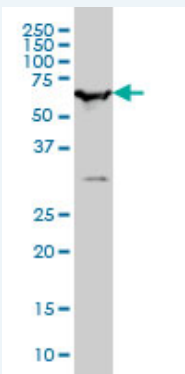
Immunofluorescence



Sandwich ELISA (Recombinant protein)



ELISA



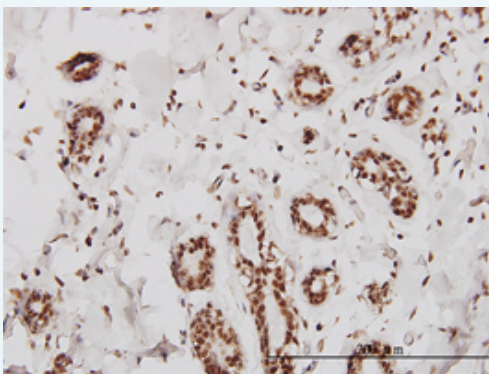
SMARCD2 monoclonal antibody (M01), clone 2F7 Western Blot analysis of SMARCD2 expression in HeLa S3 NE (Cat # L013V3).

[Protocol Download](#)

Western Blot (Recombinant protein)

[Protocol Download](#)

Immunohistochemistry (Formalin/PFA-fixed paraffin-embedded sections)

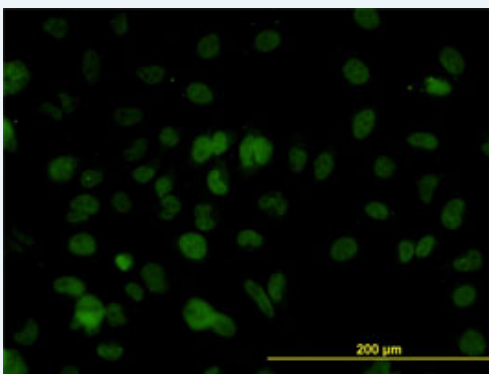


[enlarge this image](#)

Immunoperoxidase of monoclonal antibody to SMARCD2 on formalin-fixed paraffin-embedded human breast. [antibody concentration 3 ug/ml]

[Protocol Download](#)

Immunofluorescence

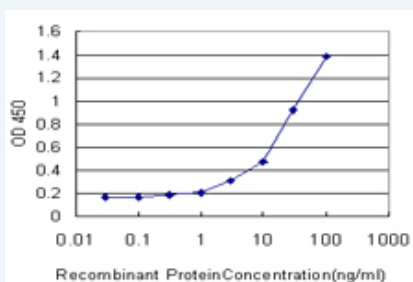


[enlarge this image](#)

Immunofluorescence of monoclonal antibody to SMARCD2 on HeLa cell. [antibody concentration 10 ug/ml]

[Protocol Download](#)

Sandwich ELISA (Recombinant protein)



Detection limit for recombinant GST tagged SMARCD2 is approximately 1ng/ml as a capture antibody.

ELISA

Gene Information

Entrez GeneID: [6603](#)**GeneBank
Accession#:** [NM_003077](#)**Protein
Accession#:** [NP_003068](#)**Gene Name:** SMARCD2**Gene Alias:** BAF60B,CRACD2,PRO2451,Rsc6p**Gene
Description:** SWI/SNF related, matrix associated, actin dependent regulator of chromatin, subfamily d, member 2**Omim ID:** [601736](#)**Gene Ontology:** [Hyperlink](#)**Gene Summary:** The protein encoded by this gene is a member of the SWI/SNF family of proteins, whose members display helicase and ATPase activities and which are thought to regulate transcription of certain genes by altering the chromatin structure around those genes. The encoded protein is part of the large ATP-dependent chromatin remodeling complex SNF/SWI and has sequence similarity to the yeast Swp73 protein. Alternatively spliced transcript variants encoding different isoforms have been found for this gene. [provided by RefSeq]**Other
Designations:** SWI/SNF complex 60 kDa subunit B,SWI/SNF-related matrix-associated actin-dependent regulator of chromatin d2,Swp73-like protein,chromatin remodeling complex BAF60B subunit,mammalian chromatin remodeling complex BRG1-associated factor 60B