



SZABO SCANDIC

Part of Europa Biosite

Produktinformation



Forschungsprodukte & Biochemikalien



Zellkultur & Verbrauchsmaterial



Diagnostik & molekulare Diagnostik



Laborgeräte & Service

Weitere Information auf den folgenden Seiten!
See the following pages for more information!



Lieferung & Zahlungsart

siehe unsere [Liefer- und Versandbedingungen](#)

Zuschläge

- Mindermengenzuschlag
- Trockeneiszuschlag
- Gefahrgutzuschlag
- Expressversand

SZABO-SCANDIC HandelsgmbH

Quellenstraße 110, A-1100 Wien

T. +43(0)1 489 3961-0

F. +43(0)1 489 3961-7

mail@szabo-scandic.com

www.szabo-scandic.com

[linkedin.com/company/szaboscandic](https://www.linkedin.com/company/szaboscandic) 

SMARCD3 monoclonal antibody (M01), clone 1G6

Catalog # : H00006604-M01

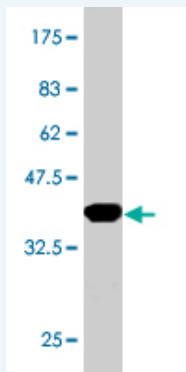
規格 : [100 ug]

[List All](#)

Specification

Product Description:	Mouse monoclonal antibody raised against a partial recombinant SMARCD3.
Immunogen:	SMARCD3 (NP_001003801, 385 a.a. ~ 483 a.a) partial recombinant protein with GST tag. MW of the GST tag alone is 26 KDa.
Sequence:	ISALDSKIHETIESINQLKIQRDFMLSF SRDPKGYVQDLLRSQSRDLKVMT DVAGNPEEERRAEFYHQPWSQEAVSRYFYCKIQRRRQELEQLVVRNT
Host:	Mouse
Reactivity:	Human
Isotype:	IgG2a Kappa

Quality Control Testing: Antibody Reactive Against Recombinant Protein.



Western Blot detection against Immunogen (36.63 KDa) .

Storage Buffer: In 1x PBS, pH 7.4

Storage Instruction: Store at -20°C or lower. Aliquot to avoid repeated freezing and thawing.

MSDS: [Download](#)

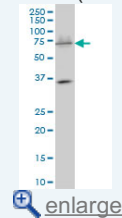
Datasheet: [Download](#)

Publication Reference

- Directing cardiomyogenic differentiation of human pluripotent stem cells by plasmid-based transient overexpression of cardiac transcription factors.
Hartung S, Schwanke K, Haase A, David R, Franz WM, Martin U, Zweigerdt R. *Stem Cells Dev.* 2013 Apr 1;22(7):1112-25. doi: 10.1089/scd.2012.0351. Epub 2013 Jan 18.
- Massively parallel sequencing identifies the gene *Megf8* with ENU-induced mutation causing heterotaxy.
Zhang Z, Alpert D, Francis R, Chatterjee B, Yu Q, Tansey T, Sabol SL, Cui C, Bai Y, Koriabine M, Yoshinaga Y, Cheng JF, Chen F, Martin J, Schackwitz W, Gunn TM, Kramer KL, De Jong PJ, Pennacchio LA, Lo CW. *Proc Natl Acad Sci U S A.* 2009 Mar 3;106(9):3219-24. Epub 2009 Feb 13.

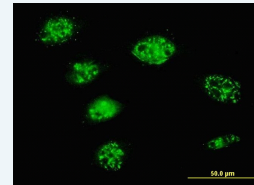
Application Image

Western Blot (Cell lysate)

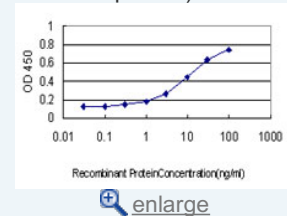


Western Blot (Recombinant protein)

Immunofluorescence



Sandwich ELISA (Recombinant protein)



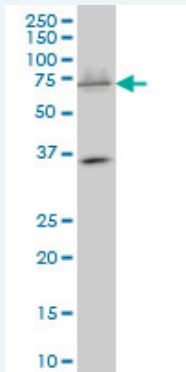
ELISA

3. The core component of the mammalian SWI/SNF complex SMARCD3/BAF60c is a coactivator for the nuclear retinoic acid receptor.

Flajollet S, Lefebvre B, Cudejko C, Staels B, Lefebvre P. Mol Cell Endocrinol. 2007 May 30;270(1-2):23-32. Epub 2007 Feb 15.

Applications

Western Blot (Cell lysate)



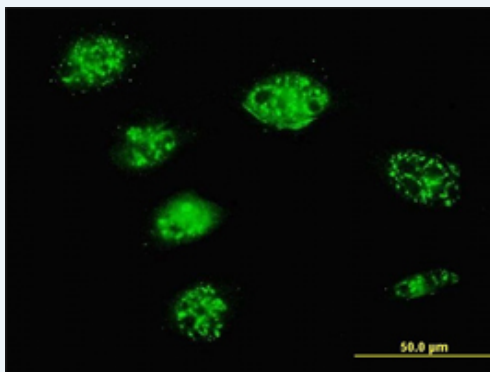
SMARCD3 monoclonal antibody (M01), clone 1G6 Western Blot analysis of SMARCD3 expression in K-562 (Cat # L009V1).


 [Protocol Download](#)

Western Blot (Recombinant protein)

 [Protocol Download](#)

Immunofluorescence

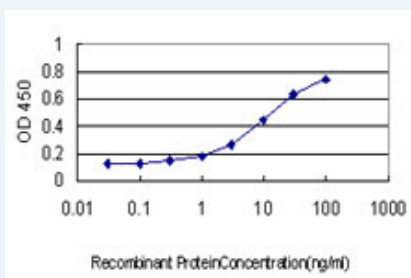


 [enlarge this image](#)

Immunofluorescence of monoclonal antibody to SMARCD3 on HeLa cell. [antibody concentration 10 ug/ml]

 [Protocol Download](#)

Sandwich ELISA (Recombinant protein)



Detection limit for recombinant GST tagged SMARCD3 is approximately 0.3ng/ml as a capture antibody.

 [Protocol Download](#)

ELISA

Gene Information

Entrez GeneID: [6604](#)

GeneBank [NM_001003801](#)

Accession#:**Protein** [NP_001003801](#)**Accession#:****Gene Name:** SMARCD3**Gene Alias:** BAF60C,CRACD3,MGC111010,Rsc6p**Gene Description:** SWI/SNF related, matrix associated, actin dependent regulator of chromatin, subfamily d, member 3**Omim ID:** [601737](#)**Gene Ontology:** [Hyperlink](#)

Gene Summary: The protein encoded by this gene is a member of the SWI/SNF family of proteins, whose members display helicase and ATPase activities and which are thought to regulate transcription of certain genes by altering the chromatin structure around those genes. The encoded protein is part of the large ATP-dependent chromatin remodeling complex SNF/SWI and has sequence similarity to the yeast Swp73 protein. Multiple alternatively spliced transcript variants have been found for this gene, but the biological validity of some variants has not been determined. [provided by RefSeq]

Other Designations: 60kDa BRG-1/Brm associated factor subunit c,SWI/SNF complex 60 kDa subunit C,SWI/SNF related, matrix associated, actin dependent regulator of chromatin, subfamily d, member 3, isoform 1,Swp73-like protein,chromatin remodeling complex BAF60C subunit,mammal