



SZABO SCANDIC

Part of Europa Biosite

Produktinformation



Forschungsprodukte & Biochemikalien



Zellkultur & Verbrauchsmaterial



Diagnostik & molekulare Diagnostik



Laborgeräte & Service

Weitere Information auf den folgenden Seiten!
See the following pages for more information!



Lieferung & Zahlungsart

siehe unsere [Liefer- und Versandbedingungen](#)

Zuschläge

- Mindermengenzuschlag
- Trockeneiszuschlag
- Gefahrgutzuschlag
- Expressversand

SZABO-SCANDIC HandelsgmbH

Quellenstraße 110, A-1100 Wien

T. +43(0)1 489 3961-0

F. +43(0)1 489 3961-7

mail@szabo-scandic.com

www.szabo-scandic.com

[linkedin.com/company/szaboscandic](https://www.linkedin.com/company/szaboscandic) 

SMARCD3 monoclonal antibody (M02), clone 5F12

Catalog # : H00006604-M02

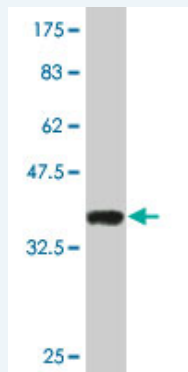
規格 : [100 ug]

[List All](#)

Specification

Product Description:	Mouse monoclonal antibody raised against a partial recombinant SMARCD3.
Immunogen:	SMARCD3 (NP_001003801, 385 a.a. ~ 483 a.a) partial recombinant protein with GST tag. MW of the GST tag alone is 26 KDa.
Sequence:	ISALDSKIHETIESINQLKIQRDFMLSF SRDPKGYVQDLLRSQSRDLKVMT DVAGNPEEERRAEFYHQPWSQEAVSRYFYCKIQRRRQELEQLVVRNT
Host:	Mouse
Reactivity:	Human, Mouse
Isotype:	IgG2a Kappa

Quality Control Testing: Antibody Reactive Against Recombinant Protein.



Western Blot detection against Immunogen (36.63 KDa) .

Storage Buffer: In 1x PBS, pH 7.4

Storage Instruction: Store at -20°C or lower. Aliquot to avoid repeated freezing and thawing.

MSDS: [Download](#)

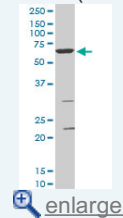
Datasheet: [Download](#)

Applications

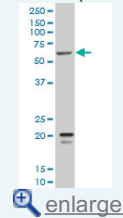
Western Blot (Cell lysate)

Application Image

Western Blot (Cell lysate)

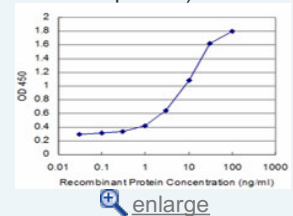


Western Blot (Cell lysate)

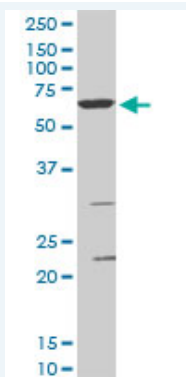


Western Blot (Recombinant protein)

Sandwich ELISA (Recombinant protein)



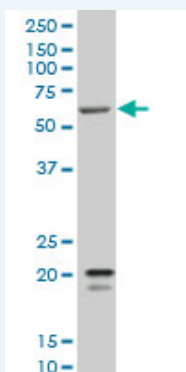
ELISA



SMARCD3 monoclonal antibody (M02), clone 5F12. Western Blot analysis of SMARCD3 expression in NIH/3T3(Cat # L018V1).

[Protocol Download](#)

Western Blot (Cell lysate)



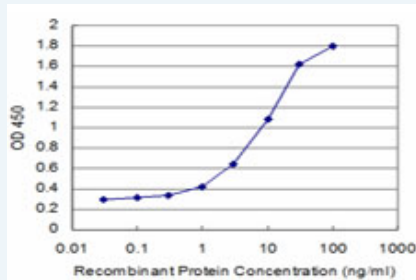
SMARCD3 monoclonal antibody (M02), clone 5F12 Western Blot analysis of SMARCD3 expression in K-562(Cat # L009V1).

[Protocol Download](#)

Western Blot (Recombinant protein)

[Protocol Download](#)

Sandwich ELISA (Recombinant protein)



Detection limit for recombinant GST tagged SMARCD3 is approximately 0.3ng/ml as a capture antibody.

[Protocol Download](#)

ELISA

Gene Information

Entrez GeneID: [6604](#)

GeneBank [NM_001003801](#)
Accession#:

Protein [NP_001003801](#)
Accession#:

Gene Name: SMARCD3

Gene Alias: BAF60C,CRACD3,MGC111010,Rsc6p

Gene Description: SWI/SNF related, matrix associated, actin dependent regulator of chromatin, subfamily d, member 3

Omim ID: [601737](#)

Gene Ontology: [Hyperlink](#)

Gene Summary: The protein encoded by this gene is a member of the SWI/SNF family of proteins, whose members display helicase and ATPase activities and which are thought to regulate transcription of certain genes by altering the chromatin structure around those genes. The encoded protein is part of the large ATP-dependent chromatin remodeling complex SNF/SWI and has sequence similarity to the yeast Swp73 protein. Multiple alternatively spliced transcript variants have been found for this gene, but the biological validity of some variants has not been determined. [provided by RefSeq]

Other Designations: 60kDa BRG-1/Brm associated factor subunit c,SWI/SNF complex 60 kDa subunit C,SWI/SNF related, matrix associated, actin dependent regulator of chromatin, subfamily d, member 3, isoform 1,Swp73-like protein,chromatin remodeling complex BAF60C subunit,mammal

[服務條款](#) | [隱私權政策](#) | [著作及商標](#) | [網站地圖](#)

©2016 亞諾法生技股份有限公司 Abnova Corporation. 版權所有.