



# SZABO SCANDIC

Part of Europa Biosite

## Produktinformation



Forschungsprodukte & Biochemikalien



Zellkultur & Verbrauchsmaterial



Diagnostik & molekulare Diagnostik



Laborgeräte & Service

Weitere Information auf den folgenden Seiten!  
See the following pages for more information!



### Lieferung & Zahlungsart

siehe unsere [Liefer- und Versandbedingungen](#)

### Zuschläge

- Mindermengenzuschlag
- Trockeneiszuschlag
- Gefahrgutzuschlag
- Expressversand

### SZABO-SCANDIC HandelsgmbH

Quellenstraße 110, A-1100 Wien

T. +43(0)1 489 3961-0

F. +43(0)1 489 3961-7

[mail@szabo-scandic.com](mailto:mail@szabo-scandic.com)

[www.szabo-scandic.com](http://www.szabo-scandic.com)

[linkedin.com/company/szaboscandic](https://www.linkedin.com/company/szaboscandic) 

## SMARCE1 polyclonal antibody (A01)

Catalog # : H00006605-A01

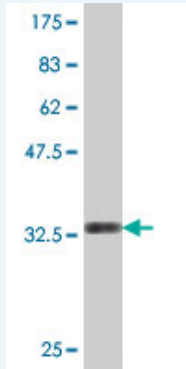
規格 : [ 50 uL ]

List All

### Specification

<b>Product Description:</b>	Mouse polyclonal antibody raised against a partial recombinant SMARCE1.
<b>Immunogen:</b>	SMARCE1 (NP_003070, 75 a.a. ~ 142 a.a) partial recombinant protein with GST tag.
<b>Sequence:</b>	RYSRKVWDQVKASNPDLKLWEIGKIIGGMWRDLTDEEKQEYLNEYEAEKI EYNESMKAYHNSPAYLAY
<b>Host:</b>	Mouse
<b>Reactivity:</b>	Human

**Quality Control Testing:** Antibody Reactive Against Recombinant Protein.



Western Blot detection against Immunogen (33.59 KDa) .

**Storage Buffer:** 50 % glycerol

**Storage Instruction:** Store at -20°C or lower. Aliquot to avoid repeated freezing and thawing.

**MSDS:** [Download](#)

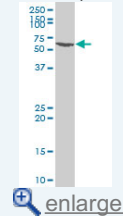
**Datasheet:** [Download](#)

### Applications

Western Blot (Cell lysate)

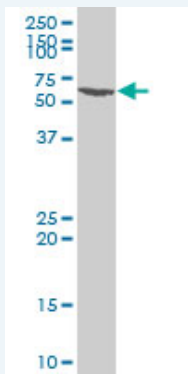
### Application Image

Western Blot (Cell lysate)



Western Blot (Recombinant protein)

ELISA



SMARCE1 polyclonal antibody (A01), Lot # 060529JCS1. Western Blot analysis of SMARCE1 expression in Daoy.

 [Protocol Download](#)

---

#### Western Blot (Recombinant protein)

 [Protocol Download](#)

---

#### ELISA

---

#### Gene Information

**Entrez GeneID:** [6605](#)

**GeneBank Accession#:** [NM\\_003079](#)

**Protein Accession#:** [NP\\_003070](#)

**Gene Name:** SMARCE1

**Gene Alias:** BAF57

**Gene Description:** SWI/SNF related, matrix associated, actin dependent regulator of chromatin, subfamily e, member 1

**Omim ID:** [603111](#)

**Gene Ontology:** [Hyperlink](#)

**Gene Summary:** The protein encoded by this gene is part of the large ATP-dependent chromatin remodeling complex SWI/SNF, which is required for transcriptional activation of genes normally repressed by chromatin. The encoded protein, either alone or when in the SWI/SNF complex, can bind to 4-way junction DNA, which is thought to mimic the topology of DNA as it enters or exits the nucleosome. The protein contains a DNA-binding HMG domain, but disruption of this domain does not abolish the DNA-binding or nucleosome-displacement activities of the SWI/SNF complex. Unlike most of the SWI/SNF complex proteins, this protein has no yeast counterpart. [provided by RefSeq]

**Other Designations:** SWI/SNF-related matrix-associated actin-dependent regulator of chromatin e1,mammalian chromatin remodeling complex BRG1-associated factor 57

---

#### Related Disease

[Asthma](#) [Asthma](#)

