



SZABO SCANDIC

Part of Europa Biosite

Produktinformation



Forschungsprodukte & Biochemikalien



Zellkultur & Verbrauchsmaterial



Diagnostik & molekulare Diagnostik



Laborgeräte & Service

Weitere Information auf den folgenden Seiten!
See the following pages for more information!



Lieferung & Zahlungsart

siehe unsere [Liefer- und Versandbedingungen](#)

Zuschläge

- Mindermengenzuschlag
- Trockeneiszuschlag
- Gefahrgutzuschlag
- Expressversand

SZABO-SCANDIC HandelsgmbH

Quellenstraße 110, A-1100 Wien

T. +43(0)1 489 3961-0

F. +43(0)1 489 3961-7

mail@szabo-scandic.com

www.szabo-scandic.com

[linkedin.com/company/szaboscandic](https://www.linkedin.com/company/szaboscandic) 



SMARCE1 purified MaxPab mouse polyclonal antibody (B01P) MaxPab®

Catalog # : H00006605-B01P

規格 : [50 ug]

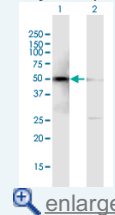
[List All](#)


Specification

Product Description:	Mouse polyclonal antibody raised against a full-length human SMARCE1 protein.
Immunogen:	SMARCE1 (AAH07082.1, 1 a.a. ~ 411 a.a) full-length human protein.
Sequence:	MSKRPSYAPPPTPAPATQMPSTPGFVGYNPYSHLAYNNYRLGGNPSTN SRVTASSGITIPKPPKPPDKPLMPYMRYSRKVWDQVKASNPDLKLWEIGK IIGGMWRDLTDEEKQEYLNEYEAEKIEYNESMKAYHNSPAYLAYINAKSRA EAAL EESRQRQSRMEKGEPYMSIQPAEDPDDYDDGF SMKHTATARFQ RNHRLISEILSESVDPVRSVVTARMQVLKRQVQSLMVHQRKLEAELLQ IEERHQEKKRKFL ESTDSFNELKRLCGLKVEVDMEKIAAEIAQAEQARK RQEEREKAAEQAERSQSSIVPEEEQAANKGEEKKDDENIPMETEETHLE ETTESQQNGEETSTPEDKESGQEGVDSMAEEGTSDSNTGSESNSAT VEEPPTDPIPEDEKKE
Host:	Mouse
Reactivity:	Human
Quality Control Testing:	Antibody reactive against mammalian transfected lysate.
Storage Buffer:	In 1x PBS, pH 7.4
Storage Instruction:	Store at -20°C or lower. Aliquot to avoid repeated freezing and thawing.
MSDS:	 Download
Datasheet:	 Download

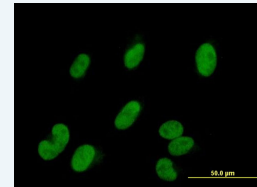
Application Image

Western Blot (Transfected lysate)



 [enlarge](#)

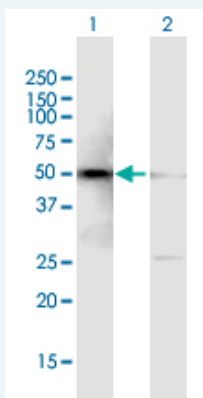
Immunofluorescence



 [enlarge](#)

Applications

Western Blot (Transfected lysate)

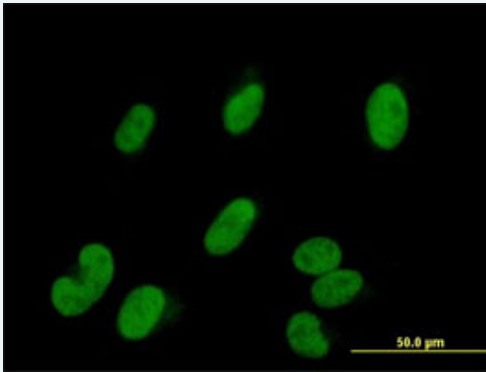



Western Blot analysis of SMARCE1 expression in transfected 293T cell line ([H00006605-T01](#)) by SMARCE1 MaxPab polyclonal antibody.

Lane 1: SMARCE1 transfected lysate(45.21 KDa).

Lane 2: Non-transfected lysate.

Immunofluorescence



 enlarge this image

Immunofluorescence of purified MaxPab antibody to SMARCE1 on HepG2 cell. [antibody concentration 10 ug/ml]

Gene Information

Entrez GeneID: [6605](#)

**GeneBank
Accession#:** [BC007082.1](#)

**Protein
Accession#:** [AAH07082.1](#)

Gene Name: SMARCE1

Gene Alias: BAF57

**Gene
Description:** SWI/SNF related, matrix associated, actin dependent regulator of chromatin, subfamily e, member 1

Omim ID: [603111](#)

Gene Ontology: [Hyperlink](#)

Gene Summary: The protein encoded by this gene is part of the large ATP-dependent chromatin remodeling complex SWI/SNF, which is required for transcriptional activation of genes normally repressed by chromatin. The encoded protein, either alone or when in the SWI/SNF complex, can bind to 4-way junction DNA, which is thought to mimic the topology of DNA as it enters or exits the nucleosome. The protein contains a DNA-binding HMG domain, but disruption of this domain does not abolish the DNA-binding or nucleosome-displacement activities of the SWI/SNF complex. Unlike most of the SWI/SNF complex proteins, this protein has no yeast counterpart. [provided by RefSeq]

**Other
Designations:** SWI/SNF-related matrix-associated actin-dependent regulator of chromatin e1,mammalian chromatin remodeling complex BRG1-associated factor 57

Related Disease

[Asthma](#) [Asthma](#)