



SZABO SCANDIC

Part of Europa Biosite

Produktinformation



Forschungsprodukte & Biochemikalien



Zellkultur & Verbrauchsmaterial



Diagnostik & molekulare Diagnostik



Laborgeräte & Service

Weitere Information auf den folgenden Seiten!
See the following pages for more information!



Lieferung & Zahlungsart

siehe unsere [Liefer- und Versandbedingungen](#)

Zuschläge

- Mindermengenzuschlag
- Trockeneiszuschlag
- Gefahrgutzuschlag
- Expressversand

SZABO-SCANDIC HandelsgmbH

Quellenstraße 110, A-1100 Wien

T. +43(0)1 489 3961-0

F. +43(0)1 489 3961-7

mail@szabo-scandic.com

www.szabo-scandic.com

[linkedin.com/company/szaboscandic](https://www.linkedin.com/company/szaboscandic) 

SMARCE1 293T Cell Transient Overexpression Lysate(Denatured)

Catalog # : H00006605-T02

規格 : [100 uL]

List All

Specification

Transfected Cell Line: 293T

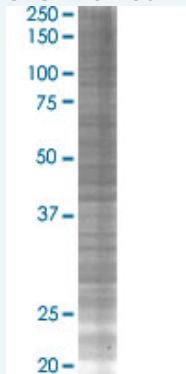
Plasmid: pCMV-SMARCE1 full-length

Host: Human

Theoretical MW (kDa): 46.7

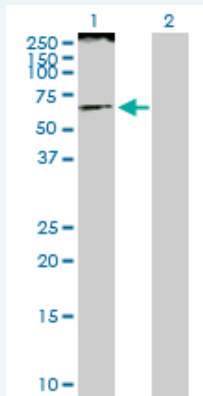
Quality Control Testing: Transient overexpression cell lysate was tested with Anti-SMARCE1 antibody (H00006605-D01P) by Western Blots.

SDS-PAGE Gel



SMARCE1 transfected lysate.

Western Blot



Lane 1: SMARCE1 transfected lysate (46.70 KDa)

Lane 2: Non-transfected lysate.

Storage Buffer: 1X Sample Buffer (50 mM Tris-HCl, 2% SDS, 10% glycerol, 300 mM 2-mercaptoethanol, 0.01% Bromophenol blue)

Storage Instruction: Store at -80°C. Aliquot to avoid repeated freezing and thawing.

MSDS:  [Download](#)

Applications

Western Blot

Gene Information

Entrez GeneID: [6605](#)

GeneBank Accession#: [BC007082.1](#)

Protein Accession#: [AAH07082.1](#)

Gene Name: SMARCE1

Gene Alias: BAF57

Gene Description: SWI/SNF related, matrix associated, actin dependent regulator of chromatin, subfamily e, member 1

Omim ID: [603111](#)

Gene Ontology: [Hyperlink](#)

Gene Summary: The protein encoded by this gene is part of the large ATP-dependent chromatin remodeling complex SWI/SNF, which is required for transcriptional activation of genes normally repressed by chromatin. The encoded protein, either alone or when in the SWI/SNF complex, can bind to 4-way junction DNA, which is thought to mimic the topology of DNA as it enters or exits the nucleosome. The protein contains a DNA-binding HMG domain, but disruption of this domain does not abolish the DNA-binding or nucleosome-displacement activities of the SWI/SNF complex. Unlike most of the SWI/SNF complex proteins, this protein has no yeast counterpart. [provided by RefSeq]

Other Designations: SWI/SNF-related matrix-associated actin-dependent regulator of chromatin e1,mammalian chromatin remodeling complex BRG1-associated factor 57

Related Disease

[Asthma](#) [Asthma](#)

[服務條款](#) | [隱私權政策](#) | [著作及商標](#) | [網站地圖](#)

©2016 亞諾法生技股份有限公司 Abnova Corporation. 版權所有.