



SZABO SCANDIC

Part of Europa Biosite

Produktinformation



Forschungsprodukte & Biochemikalien



Zellkultur & Verbrauchsmaterial



Diagnostik & molekulare Diagnostik



Laborgeräte & Service

Weitere Information auf den folgenden Seiten!
See the following pages for more information!



Lieferung & Zahlungsart

siehe unsere [Liefer- und Versandbedingungen](#)

Zuschläge

- Mindermengenzuschlag
- Trockeneiszuschlag
- Gefahrgutzuschlag
- Expressversand

SZABO-SCANDIC HandelsgmbH

Quellenstraße 110, A-1100 Wien

T. +43(0)1 489 3961-0

F. +43(0)1 489 3961-7

mail@szabo-scandic.com

www.szabo-scandic.com

[linkedin.com/company/szaboscandic](https://www.linkedin.com/company/szaboscandic) 

SMN2 monoclonal antibody (M01), clone 2B11-2A9

Catalog # : H00006607-M01

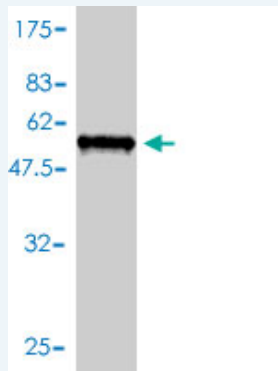
規格 : [100 ug]

[List All](#)

Specification

Product Description:	Mouse monoclonal antibody raised against a full length recombinant SMN2.
Immunogen:	SMN2 (AAH00908, 1 a.a. ~ 282 a.a) full-length recombinant protein with GST tag. MW of the GST tag alone is 26 KDa.
Sequence:	MAMSSGGSGGGVPEQEDSVLFRRGTGQSDDSDIWDALIKAYDKAVA SFKHALKNGDICETSGKPKTTPKRKPAKKNKSQKNTAASLQQWKVGDK CSAWSEDGCYPATIASIDFKRETCVVYTYGNGNREEQNLSDLLSPICEV ANNIEQNAQENENESQVSTDESENSRSPGNKSDNIKPKSAPWNSFLPPPP PMPGPRLGPGKPLKFNGLPPPPPPPPHLLSCWLPPFSGPPIIPPPPP ICPDSLDDADALGSMLISWYMSGYHTGYMMEMLA
Host:	Mouse
Reactivity:	Human
Isotype:	IgG2a kappa

Quality Control Testing: Antibody Reactive Against Recombinant Protein.



Western Blot detection against Immunogen (56.76 KDa) .

Storage Buffer: In 1x PBS, pH 7.4

Storage Instruction: Store at -20°C or lower. Aliquot to avoid repeated freezing and thawing.

MSDS: [Download](#)

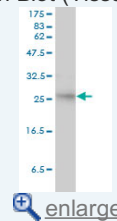
Datasheet: [Download](#)

Applications

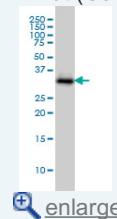
Western Blot (Tissue lysate)

Application Image

Western Blot (Tissue lysate)

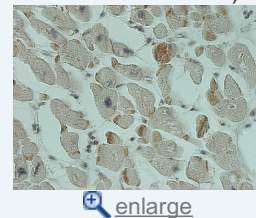


Western Blot (Cell lysate)

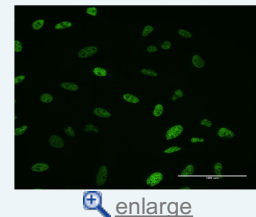


Western Blot (Recombinant protein)

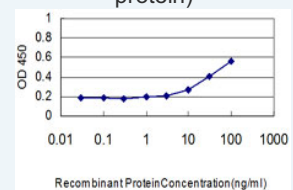
Immunohistochemistry (Formalin/PFA-fixed paraffin-embedded sections)



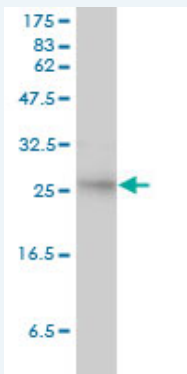
Immunofluorescence



Sandwich ELISA (Recombinant protein)



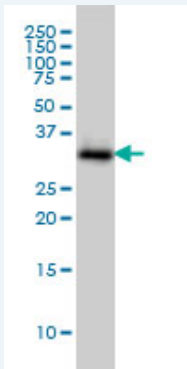
ELISA



SMN2 monoclonal antibody (M01), clone 2B11-2A9. Western Blot analysis of SMN2 expression in human colon.

 [Protocol Download](#)

Western Blot (Cell lysate)



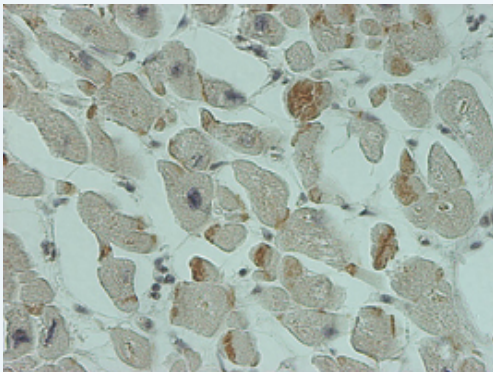
SMN2 monoclonal antibody (M01), clone 2B11-2A9 Western Blot analysis of SMN2 expression in IMR-32 (Cat # L008V1).


 [Protocol Download](#)

Western Blot (Recombinant protein)

 [Protocol Download](#)

Immunohistochemistry (Formalin/PFA-fixed paraffin-embedded sections)

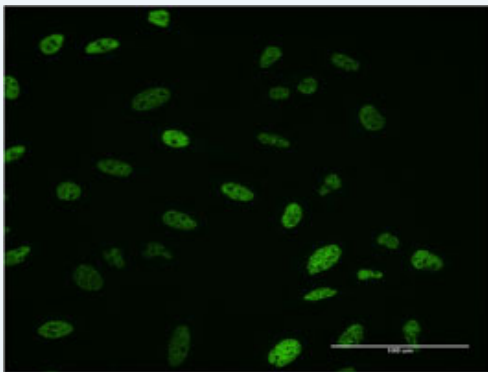


 [enlarge this image](#)

Immunoperoxidase of monoclonal antibody to SMN2 on formalin-fixed paraffin-embedded human heart tissue. [antibody concentration 1 ~ 10 ug/ml]

 [Protocol Download](#)

Immunofluorescence

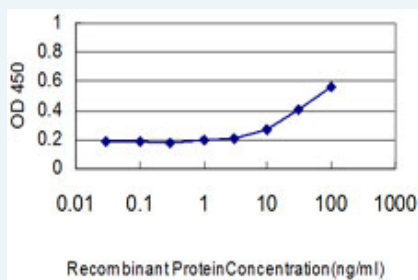


[enlarge this image](#)

Immunofluorescence of monoclonal antibody to SMN2 on HeLa cell. [antibody concentration 10 ug/ml]

[Protocol Download](#)

Sandwich ELISA (Recombinant protein)



Detection limit for recombinant GST tagged SMN2 is approximately 0.3ng/ml as a capture antibody.

[Protocol Download](#)

ELISA

Gene Information

Entrez GeneID: [6607](#)

GeneBank Accession#: [BC000908](#)

Protein Accession#: [AAH00908](#)

Gene Name: SMN2

Gene Alias: BCD541,C-BCD541,FLJ76644,MGC20996,MGC5208,SMNC

Gene Description: survival of motor neuron 2, centromeric

Omim ID: [601627](#)

Gene Ontology: [Hyperlink](#)

Gene Summary: This gene is part of a 500 kb inverted duplication on chromosome 5q13. This duplicated region contains at least four genes and repetitive elements which make it prone to rearrangements and deletions. The repetitiveness and complexity of the sequence have also caused difficulty in determining the organization of this genomic region. The telomeric and centromeric copies of this gene are nearly identical and encode the same protein. While mutations in the telomeric copy are associated with spinal muscular atrophy, mutations in this gene, the centromeric copy, do not lead to disease. This gene may be a modifier of disease caused by mutation in the telomeric copy. The critical sequence difference between the two genes is a single nucleotide in exon 7, which is thought to be an exon splice enhancer. Note that the nine exons of both the telomeric and centromeric copies are designated

historically as exon 1, 2a, 2b, and 3-8. It is thought that gene conversion events may involve the two genes, leading to varying copy numbers of each gene. The full length protein encoded by this gene localizes to both the cytoplasm and the nucleus. Within the nucleus, the protein localizes to subnuclear bodies called gems which are found near coiled bodies containing high concentrations of small ribonucleoproteins (snRNPs). This protein forms heteromeric complexes with proteins such as SIP1 and GEMIN4, and also interacts with several proteins known to be involved in the biogenesis of snRNPs, such as hnRNP U protein and the small nucleolar RNA binding protein. Four transcript variants encoding distinct isoforms have been described. [provided by RefSeq

Other OTTHUMP00000125236,OTTHUMP00000125237,gemin 1
Designations:

Related Disease

[Amyotrophic Lateral Sclerosis](#) [Amyotrophic lateral sclerosis](#) [Disease Progression](#)
[Genetic Predisposition to Disease](#) [Muscular Atrophy](#), [Spinal Nerve Degeneration](#)
[Spinal Muscular Atrophies of Childhood](#) [Spinal muscular atrophy](#)

[服務條款](#) | [隱私權政策](#) | [著作及商標](#) | [網站地圖](#)

©2016 亞諾法生技股份有限公司 Abnova Corporation. 版權所有.