



# SZABO SCANDIC

Part of Europa Biosite

## Produktinformation



Forschungsprodukte & Biochemikalien



Zellkultur & Verbrauchsmaterial



Diagnostik & molekulare Diagnostik



Laborgeräte & Service

Weitere Information auf den folgenden Seiten!  
See the following pages for more information!



### Lieferung & Zahlungsart

siehe unsere [Liefer- und Versandbedingungen](#)

### Zuschläge

- Mindermengenzuschlag
- Trockeneiszuschlag
- Gefahrgutzuschlag
- Expressversand

### SZABO-SCANDIC HandelsgmbH

Quellenstraße 110, A-1100 Wien

T. +43(0)1 489 3961-0

F. +43(0)1 489 3961-7

[mail@szabo-scandic.com](mailto:mail@szabo-scandic.com)

[www.szabo-scandic.com](http://www.szabo-scandic.com)

[linkedin.com/company/szaboscandic](https://www.linkedin.com/company/szaboscandic) 

## SMO monoclonal antibody (M08), clone 3B1

Catalog # : H00006608-M08

規格 : [ 100 ug ]

[List All](#)

### Specification

**Product Description:** Mouse monoclonal antibody raised against a partial recombinant SMO.

**Immunogen:** SMO (NP\_005622, 56 a.a. ~ 155 a.a) partial recombinant protein with GST tag. MW of the GST tag alone is 26 KDa.

**Sequence:** GPPPLSHCGRAAPCEPLRYNVCLGSVLPYGATSTLLAGDSDSQEEAH  
GKLVLWSGLRNAPRCWAVIQPLLCAVYMPKCENDRVELPSRTLQATR  
GPCA

**Host:** Mouse

**Reactivity:** Human

**Isotype:** IgG1 Kappa

**Quality Control Testing:** Antibody Reactive Against Recombinant Protein.

**Storage Buffer:** In 1x PBS, pH 7.4

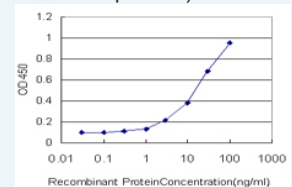
**Storage Instruction:** Store at -20°C or lower. Aliquot to avoid repeated freezing and thawing.


**MSDS:**  [Download](#)

**Datasheet:**  [Download](#)

### Application Image

Sandwich ELISA (Recombinant protein)

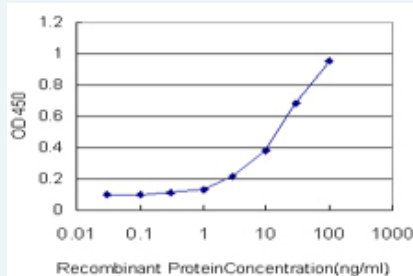


 [enlarge](#)


ELISA

### Applications

Sandwich ELISA (Recombinant protein)



Detection limit for recombinant GST tagged SMO is approximately 0.1ng/ml as a capture antibody.

 [Protocol Download](#)

ELISA

### Gene Information

**Entrez GeneID:** [6608](#)

**GeneBank** [NM\\_005631](#)

**Accession#:**

**Protein** [NP\\_005622](#)

**Accession#:**

**Gene Name:** SMO

**Gene Alias:** Gx,SMOH

**Gene Description:** smoothed homolog (Drosophila)

**Omim ID:** [601500](#)

**Gene Ontology:** [Hyperlink](#)

**Other Designations:** seven transmembrane helix receptor,smoothened

**Gene Pathway**

[Basal cell carcinoma](#) [Hedgehog signaling pathway](#) [Pathways in cancer](#)

**Related Disease**

[Autistic Disorder](#) [Genetic Predisposition to Disease](#) [Head and Neck Neoplasms](#)  
[Neoplasm Recurrence, Local](#) [Neoplasms, Second Primary](#) [Pancreatic cancer](#)  
[Pancreatic Neoplasms](#) [Thyroid Neoplasms](#) [Urinary Bladder Neoplasms](#)

[服務條款](#) | [隱私權政策](#) | [著作及商標](#) | [網站地圖](#)

©2016 亞諾法生技股份有限公司 Abnova Corporation. 版權所有.