



SZABO SCANDIC

Part of Europa Biosite

Produktinformation



Forschungsprodukte & Biochemikalien



Zellkultur & Verbrauchsmaterial



Diagnostik & molekulare Diagnostik



Laborgeräte & Service

Weitere Information auf den folgenden Seiten!
See the following pages for more information!



Lieferung & Zahlungsart

siehe unsere [Liefer- und Versandbedingungen](#)

Zuschläge

- Mindermengenzuschlag
- Trockeneiszuschlag
- Gefahrgutzuschlag
- Expressversand

SZABO-SCANDIC HandelsgmbH

Quellenstraße 110, A-1100 Wien

T. +43(0)1 489 3961-0

F. +43(0)1 489 3961-7

mail@szabo-scandic.com

www.szabo-scandic.com

[linkedin.com/company/szaboscandic](https://www.linkedin.com/company/szaboscandic) 

SMO monoclonal antibody (M11), clone 1D9

Catalog # : H00006608-M11

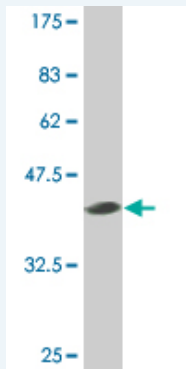
規格 : [100 ug]

[List All](#)

Specification

| | |
|-----------------------------|--|
| Product Description: | Mouse monoclonal antibody raised against a full-length recombinant SMO. |
| Immunogen: | SMO (NP_005622.1, 653 a.a. ~ 787 a.a) full-length recombinant protein with GST tag. MW of the GST tag alone is 26 KDa. |
| Sequence: | NLWLVEAEISPELQKRLGRKKKRRKRKKEVCPLAPPELHPPAPAPSTIP RLPQLPRQKCLVAAGAWGAGDSCRQGAWTLVSNPFCPEPSPQDPFL PSAPAPVAWAHGRRQGLGPIHSRTNLMDELMDADSDF |
| Host: | Mouse |
| Reactivity: | Human |
| Isotype: | IgG2a Kappa |

Quality Control Testing: Antibody Reactive Against Recombinant Protein.



Western Blot detection against Immunogen (40.37 KDa) .

Storage Buffer: In 1x PBS, pH 7.4

Storage Instruction: Store at -20°C or lower. Aliquot to avoid repeated freezing and thawing.

MSDS: [Download](#)

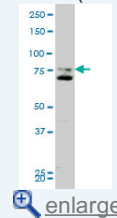
Datasheet: [Download](#)

Applications

Western Blot (Cell lysate)

Application Image

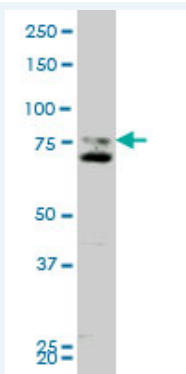
Western Blot (Cell lysate)



Western Blot (Recombinant protein)

Sandwich ELISA (Recombinant protein)

ELISA



SMO monoclonal antibody (M11), clone 1D9 Western Blot analysis of SMO expression in A-431 (Cat # L015V1).

[Protocol Download](#)

Western Blot (Recombinant protein)

[Protocol Download](#)

Sandwich ELISA (Recombinant protein)

Detection limit for recombinant GST tagged SMO is approximately 30ng/ml as a capture antibody.

[Protocol Download](#)

ELISA

Gene Information

Entrez GeneID: [6608](#)

GeneBank Accession#: [NM_005631](#)

Protein Accession#: [NP_005622.1](#)

Gene Name: SMO

Gene Alias: Gx,SMOH

Gene Description: smoothed homolog (Drosophila)

Omim ID: [601500](#)

Gene Ontology: [Hyperlink](#)

Other Designations: seven transmembrane helix receptor,smoothened

Gene Pathway

[Basal cell carcinoma](#) [Hedgehog signaling pathway](#) [Pathways in cancer](#)

Related Disease

[Autistic Disorder](#) [Genetic Predisposition to Disease](#) [Head and Neck Neoplasms](#) [Neoplasm Recurrence, Local](#) [Neoplasms, Second Primary](#) [Pancreatic cancer](#) [Pancreatic Neoplasms](#) [Thyroid Neoplasms](#) [Urinary Bladder Neoplasms](#)