



SZABO SCANDIC

Part of Europa Biosite

Produktinformation



Forschungsprodukte & Biochemikalien



Zellkultur & Verbrauchsmaterial



Diagnostik & molekulare Diagnostik



Laborgeräte & Service

Weitere Information auf den folgenden Seiten!
See the following pages for more information!



Lieferung & Zahlungsart

siehe unsere [Liefer- und Versandbedingungen](#)

Zuschläge

- Mindermengenzuschlag
- Trockeneiszuschlag
- Gefahrgutzuschlag
- Expressversand

SZABO-SCANDIC HandelsgmbH

Quellenstraße 110, A-1100 Wien

T. +43(0)1 489 3961-0

F. +43(0)1 489 3961-7

mail@szabo-scandic.com

www.szabo-scandic.com

[linkedin.com/company/szaboscandic](https://www.linkedin.com/company/szaboscandic) 

SMO monoclonal antibody (M14), clone 3D10

Catalog # : H00006608-M14

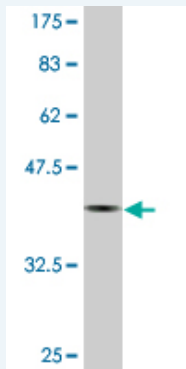
規格 : [100 ug]

[List All](#)

Specification

Product Description:	Mouse monoclonal antibody raised against a full-length recombinant SMO.
Immunogen:	SMO (NP_005622.1, 653 a.a. ~ 787 a.a) full-length recombinant protein with GST tag. MW of the GST tag alone is 26 KDa.
Sequence:	NLWLVEAEISPELQKRLGRKKKRRKRKKEVCPLAPPELHPPAPAPSTIP RLPQLPRQKCLVAAGAWGAGDSCRQGAWTLVSNPFCPEPSPPQDPFL PSAPAPVAWAHGRRQGLGPIHSRTNLMDELMDADSDF
Host:	Mouse
Reactivity:	Human
Isotype:	IgG2a Kappa

Quality Control Testing: Antibody Reactive Against Recombinant Protein.



Western Blot detection against Immunogen (40.37 KDa) .

Storage Buffer: In 1x PBS, pH 7.4

Storage Instruction: Store at -20°C or lower. Aliquot to avoid repeated freezing and thawing.

MSDS: [Download](#)

Datasheet: [Download](#)

Applications

Western Blot (Recombinant protein)

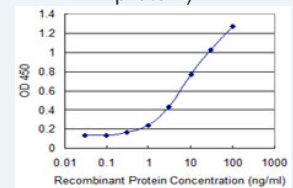
[Protocol Download](#)

Sandwich ELISA (Recombinant protein)

Application Image

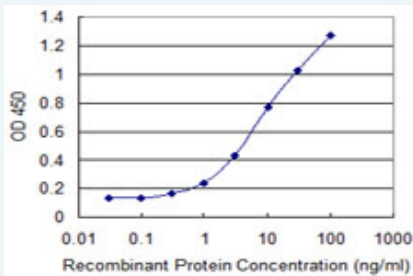
Western Blot (Recombinant protein)

Sandwich ELISA (Recombinant protein)




[enlarge](#)

ELISA



Detection limit for recombinant GST tagged SMO is 0.1 ng/ml as a capture antibody.

 [Protocol Download](#)

ELISA

Gene Information

Entrez GeneID: [6608](#)

GeneBank [NM_005631](#)

Accession#:

Protein [NP_005622.1](#)

Accession#:

Gene Name: SMO

Gene Alias: Gx,SMOH

Gene [smoothened homolog \(Drosophila\)](#)

Description:

Omim ID: [601500](#)

Gene Ontology: [Hyperlink](#)

Other [seven transmembrane helix receptor,smoothened](#)

Designations:

Gene Pathway

[Basal cell carcinoma Hedgehog signaling pathway Pathways in cancer](#)

Related Disease

[Autistic Disorder](#) [Genetic Predisposition to Disease](#) [Head and Neck Neoplasms](#)

[Neoplasm Recurrence, Local](#) [Neoplasms, Second Primary](#) [Pancreatic cancer](#)

[Pancreatic Neoplasms](#) [Thyroid Neoplasms](#) [Urinary Bladder Neoplasms](#)