



SZABO SCANDIC

Part of Europa Biosite

Produktinformation



Forschungsprodukte & Biochemikalien



Zellkultur & Verbrauchsmaterial



Diagnostik & molekulare Diagnostik



Laborgeräte & Service

Weitere Information auf den folgenden Seiten!
See the following pages for more information!



Lieferung & Zahlungsart

siehe unsere [Liefer- und Versandbedingungen](#)

Zuschläge

- Mindermengenzuschlag
- Trockeneiszuschlag
- Gefahrgutzuschlag
- Expressversand

SZABO-SCANDIC HandelsgmbH

Quellenstraße 110, A-1100 Wien

T. +43(0)1 489 3961-0

F. +43(0)1 489 3961-7

mail@szabo-scandic.com

www.szabo-scandic.com

[linkedin.com/company/szaboscandic](https://www.linkedin.com/company/szaboscandic) 

SMPD2 monoclonal antibody (M01), clone 2C9

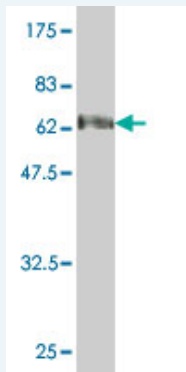
Catalog # : H00006610-M01

規格 : [50 ug]

[List All](#)

Specification

Product Description:	Mouse monoclonal antibody raised against a full length recombinant SMPD2.
Immunogen:	SMPD2 (AAH00038.1, 1 a.a. ~ 423 a.a) full-length recombinant protein with GST tag. MW of the GST tag alone is 26 KDa.
Sequence:	MKPNFSLRLRIFNLNCWGIPYLSKHRADMRRLGDFLNQESFDLALLEEV WSEQDFQYLRQKLSPTYPAAHFRSGIIGSLCVFSKHPIQELTQHIYTLN GYPYMIHHGDWFSKAVGLLVHLSGMVLNAYVTHLHAEYNRQKDIYLAH RVAQAWELAQFIHHTSKKADVLLCGDLNMHPEDLGCCLLKEWTGLHD AYLETRDFKGSSEEGNTMVPKNCYVSQQELKPFPGVRIDYVLYKAVSGF YISCKSFETTTGFDPHSGTPLSDHEALMATLVRHSPPQQNPSSTHGPA ERSPLMCVLKEAWTELGLGMAQARWWATFASYVIGLGLLLLALLCVLAA GGGAGEAAILLWTPSVGLVWAGAFYLFHVQEVNGLYRAQAELQHVLG RAREAQDLGPEPQPALLLGGQEGDRTKEQ
Host:	Mouse
Reactivity:	Human
Isotype:	IgG3 Kappa
Quality Control Testing:	Antibody Reactive Against Recombinant Protein.



Western Blot detection against Immunogen (72.27 KDa) .

Storage Buffer: In 1x PBS, pH 7.4

Storage Instruction: Store at -20°C or lower. Aliquot to avoid repeated freezing and thawing.

MSDS: [Download](#)

Datasheet: [Download](#)

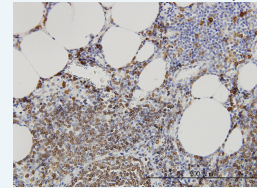
Publication Reference

1. [Dysregulated sphingolipid metabolism in endometriosis.](#)
Hou Lee Y, Wen Tan C, Venkatratnam A, Seng Tan C, Cui L, Feei Loh S, Griffith L, Tannenbaum SR, Kok Yen Chan JJ Clin Endocrinol Metab. 2014 Jun 24;jc20141340.

Application Image

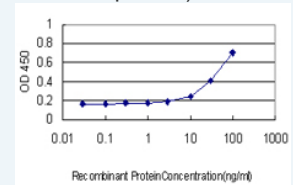
Western Blot (Recombinant protein)

Immunohistochemistry (Formalin/PFA-fixed paraffin-embedded sections)



[enlarge](#)

Sandwich ELISA (Recombinant protein)




[enlarge](#)

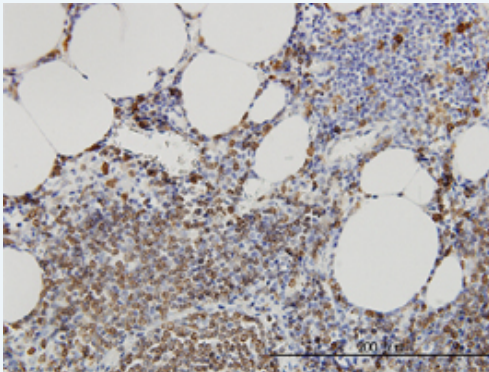
ELISA

Applications

Western Blot (Recombinant protein)

 [Protocol Download](#)

Immunohistochemistry (Formalin/PFA-fixed paraffin-embedded sections)

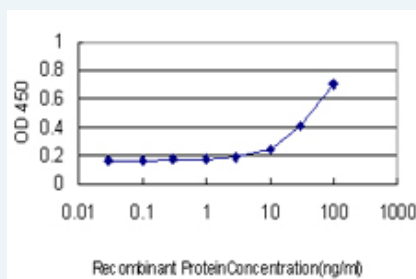


 [enlarge this image](#)

Immunoperoxidase of monoclonal antibody to SMPD2 on formalin-fixed paraffin-embedded human lymph node. [antibody concentration 3 ug/ml]

 [Protocol Download](#)

Sandwich ELISA (Recombinant protein)



Detection limit for recombinant GST tagged SMPD2 is approximately 10ng/ml as a capture antibody.

 [Protocol Download](#)

ELISA

Gene Information

Entrez GeneID: [6610](#)

GeneBank [BC000038](#)

Accession#:

Protein [AAH00038.1](#)

Accession#:

Gene Name: SMPD2

Gene Alias: NSMASE, NSMASE1

Gene Description: sphingomyelin phosphodiesterase 2, neutral membrane (neutral sphingomyelinase)

Omim ID: [603498](#)

Gene Ontology: [Hyperlink](#)

Other Designations: OTTHUMP00000040472

Gene Pathway

Metabolic pathways [Sphingolipid metabolism](#)

Related Disease

[Cardiovascular Diseases](#) [Diabetes Mellitus, Type 2](#) [Edema](#)

[服務條款](#) | [隱私權政策](#) | [著作及商標](#) | [網站地圖](#)

©2016 亞諾法生技股份有限公司 Abnova Corporation. 版權所有.