



SZABO SCANDIC

Part of Europa Biosite

Produktinformation



Forschungsprodukte & Biochemikalien



Zellkultur & Verbrauchsmaterial



Diagnostik & molekulare Diagnostik



Laborgeräte & Service

Weitere Information auf den folgenden Seiten!
See the following pages for more information!



Lieferung & Zahlungsart

siehe unsere [Liefer- und Versandbedingungen](#)

Zuschläge

- Mindermengenzuschlag
- Trockeneiszuschlag
- Gefahrgutzuschlag
- Expressversand

SZABO-SCANDIC HandelsgmbH

Quellenstraße 110, A-1100 Wien

T. +43(0)1 489 3961-0

F. +43(0)1 489 3961-7

mail@szabo-scandic.com

www.szabo-scandic.com

[linkedin.com/company/szaboscandic](https://www.linkedin.com/company/szaboscandic) 



SUMO3 MaxPab mouse polyclonal antibody (B01) MaxPab®

Catalog # : H00006612-B01

規格 : [50 uL]

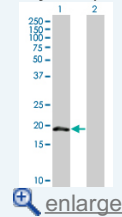
[List All](#)

Specification

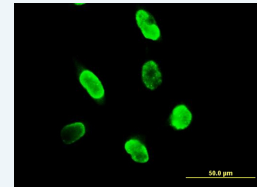
Product Description:	Mouse polyclonal antibody raised against a full-length human SUMO3 protein.
Immunogen:	SUMO3 (AAH08420, 1 a.a. ~ 103 a.a) full-length human protein.
Sequence:	MSEEKPKEGVKTENDHINLKVAGQDGSVVQFKIKRHTPLSKLMKAYCER QGLSMRQIRFRFDGQPINETDTPAQLEMEDEDIDVFQQQTGGVPESL AGHSF
Host:	Mouse
Reactivity:	Human
Quality Control Testing:	Antibody reactive against mammalian transfected lysate.
Storage Buffer:	No additive
Storage Instruction:	Store at -20°C or lower. Aliquot to avoid repeated freezing and thawing.
Note:	For IHC and IF applications, antibody purification with Protein A will be needed prior to use.
MSDS:	 Download
Datasheet:	 Download

Application Image

Western Blot (Transfected lysate)

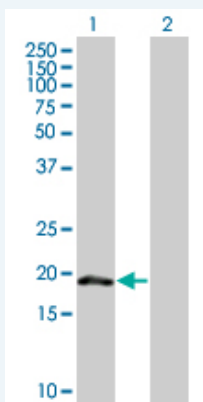


Immunofluorescence




Applications

Western Blot (Transfected lysate)

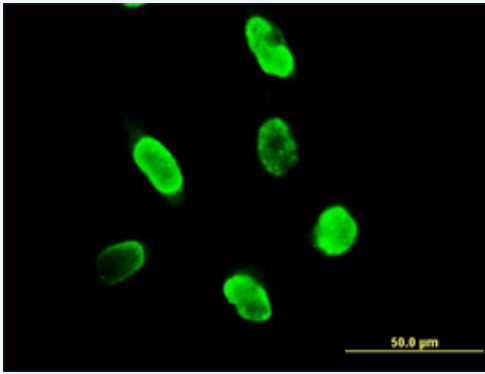


Western Blot analysis of SUMO3 expression in transfected 293T cell line ([H00006612-T01](#)) by SUMO3 MaxPab polyclonal antibody.

Lane 1: SUMO3 transfected lysate(11.33 KDa).
Lane 2: Non-transfected lysate.

 [Protocol Download](#)

Immunofluorescence



[enlarge this image](#)

Immunofluorescence of purified MaxPab antibody to SUMO3 on HeLa cell. [antibody concentration 10 ug/ml]

 [Protocol Download](#)

Gene Information

Entrez GeneID: [6612](#)

**GeneBank
Accession#:** [BC008420](#)

**Protein
Accession#:** [AAH08420](#)

Gene Name: SUMO3

Gene Alias: SMT3A,SMT3H1,SUMO-3

**Gene
Description:** SMT3 suppressor of mif two 3 homolog 3 (S. cerevisiae)

Omim ID: [602231](#)

Gene Ontology: [Hyperlink](#)

Gene Summary: SUMO proteins, such as SUMO3, and ubiquitin (see MIM 191339) posttranslationally modify numerous cellular proteins and affect their metabolism and function. However, unlike ubiquitination, which targets proteins for degradation, sumoylation participates in a number of cellular processes, such as nuclear transport, transcriptional regulation, apoptosis, and protein stability (Su and Li, 2002 [PubMed 12383504]). [supplied by OMIM]

**Other
Designations:** OTTHUMP00000115275,SMT3 suppressor of mif two 3 homolog 1,small ubiquitin-like modifier protein 3

Related Disease

[Adenocarcinoma](#) [Genetic Predisposition to Disease](#) [Kidney Failure, Chronic](#) [Pancreatic Neoplasms](#)

[服務條款](#) | [隱私權政策](#) | [著作及商標](#) | [網站地圖](#)

©2016 亞諾法生技股份有限公司 Abnova Corporation. 版權所有.