



SZABO SCANDIC

Part of Europa Biosite

Produktinformation



Forschungsprodukte & Biochemikalien



Zellkultur & Verbrauchsmaterial



Diagnostik & molekulare Diagnostik



Laborgeräte & Service

Weitere Information auf den folgenden Seiten!
See the following pages for more information!



Lieferung & Zahlungsart

siehe unsere [Liefer- und Versandbedingungen](#)

Zuschläge

- Mindermengenzuschlag
- Trockeneiszuschlag
- Gefahrgutzuschlag
- Expressversand

SZABO-SCANDIC HandelsgmbH

Quellenstraße 110, A-1100 Wien

T. +43(0)1 489 3961-0

F. +43(0)1 489 3961-7

mail@szabo-scandic.com

www.szabo-scandic.com

[linkedin.com/company/szaboscandic](https://www.linkedin.com/company/szaboscandic) 

SUMO2 purified MaxPab rabbit polyclonal antibody (D01P) MaxPab®

Catalog # : H00006613-D01P

規格 : [100 ug]

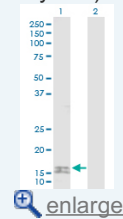
[List All](#)

Specification

Product Description:	Rabbit polyclonal antibody raised against a full-length human SUMO2 protein.
Immunogen:	SUMO2 (NP_008868.3, 1 a.a. ~ 95 a.a) full-length human protein.
Sequence:	MADEKPKEGVKTENNDHINLKVAGQDGSVQFKIKRHTPLSKLMKAYCE RQGLSMRQIRFRFDGQPINETDTPAQLEMEDEDIDVFQQQTGGVY
Host:	Rabbit
Reactivity:	Human
Quality Control Testing:	Antibody reactive against mammalian transfected lysate.
Storage Buffer:	In 1x PBS, pH 7.4
Storage Instruction:	Store at -20°C or lower. Aliquot to avoid repeated freezing and thawing.
MSDS:	Download
Datasheet:	Download

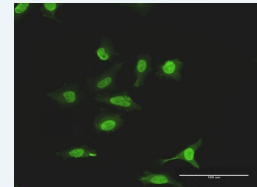
Application Image

Western Blot (Transfected lysate)



[enlarge](#)

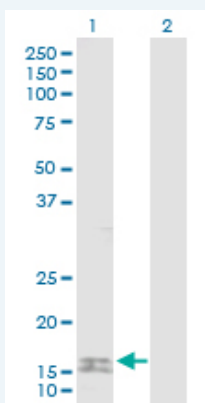
Immunofluorescence



[enlarge](#)

Applications

Western Blot (Transfected lysate)



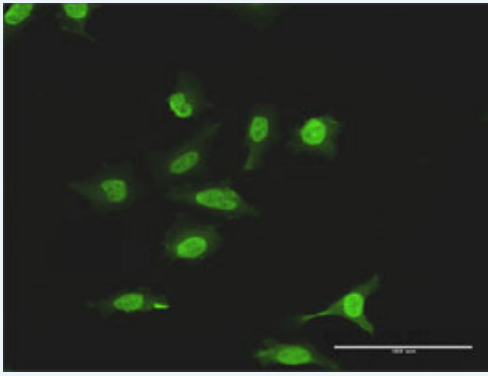
Western Blot analysis of SUMO2 expression in transfected 293T cell line (H00006613-T02) by SUMO2 MaxPab polyclonal antibody.

Lane 1: SUMO2 transfected lysate(10.90 KDa).

Lane 2: Non-transfected lysate.

[Protocol Download](#)

Immunofluorescence



[enlarge this image](#)

Immunofluorescence of purified MaxPab antibody to SUMO2 on HeLa cell. [antibody concentration 10 ug/ml]

[Protocol Download](#)

Gene Information

Entrez GeneID: [6613](#)

**GeneBank
Accession#:** [NM_006937.3](#)

**Protein
Accession#:** [NP_008868.3](#)

Gene Name: SUMO2

Gene Alias: HSMT3,MGC117191,SMT3B,SMT3H2

**Gene
Description:** SMT3 suppressor of mif two 3 homolog 2 (S. cerevisiae)

Omim ID: [603042](#)

Gene Ontology: [Hyperlink](#)

Gene Summary: This gene encodes a protein that is a member of the SUMO (small ubiquitin-like modifier) protein family. It functions in a manner similar to ubiquitin in that it is bound to target proteins as part of a post-translational modification system. However, unlike ubiquitin which targets proteins for degradation, this protein is involved in a variety of cellular processes, such as nuclear transport, transcriptional regulation, apoptosis, and protein stability. It is not active until the last two amino acids of the carboxy-terminus have been cleaved off. Numerous pseudogenes have been reported for this gene. Alternate transcriptional splice variants, encoding different isoforms, have been characterized. [provided by RefSeq]

**Other
Designations:** SMT3 suppressor of mif two 3 homolog 2,sentrin 2,small ubiquitin-like modifier 2, isoform a

[服務條款](#) | [隱私權政策](#) | [著作及商標](#) | [網站地圖](#)

©2016 亞諾法生技股份有限公司 Abnova Corporation. 版權所有.